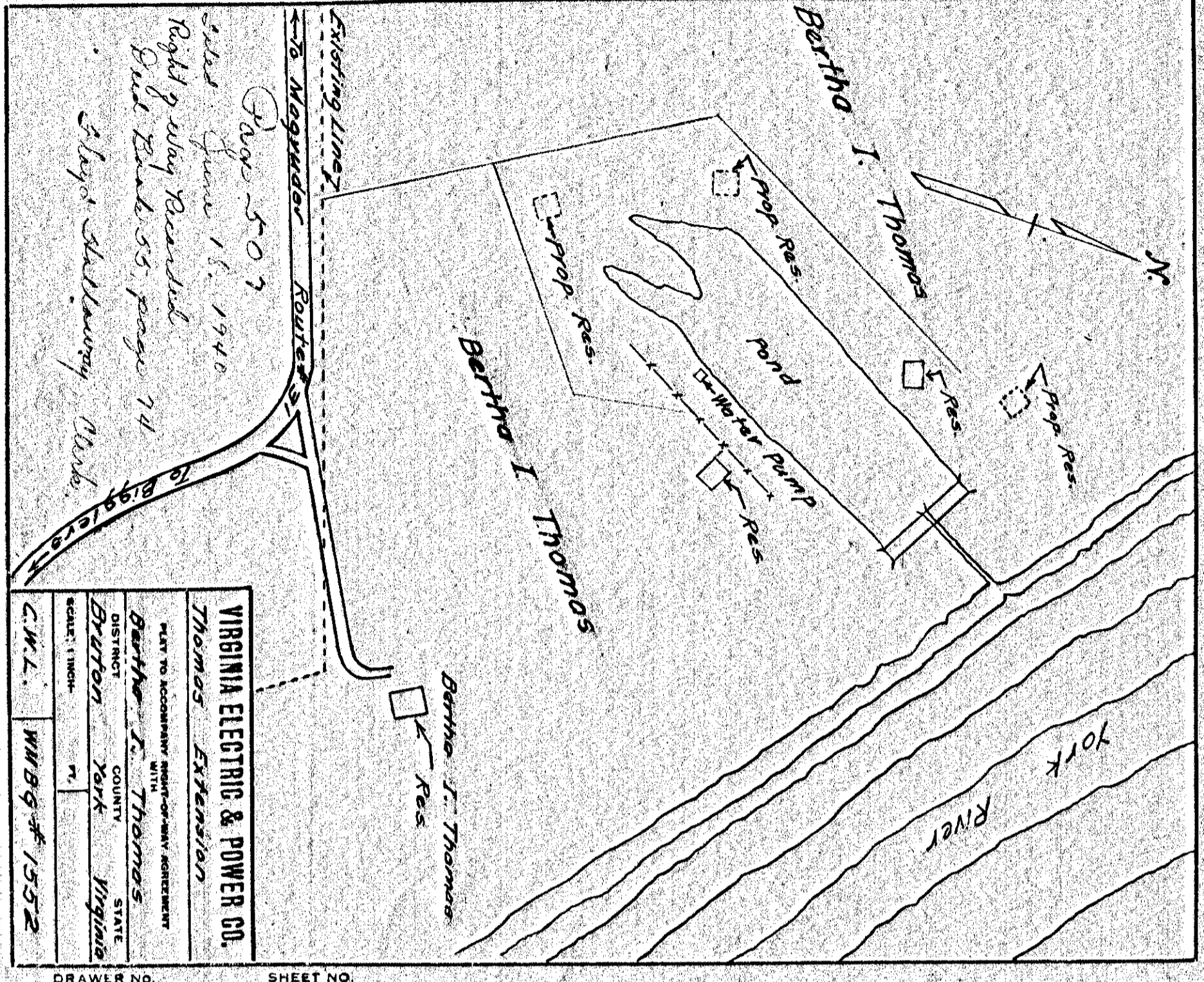


VIRGINIA ELECTRIC & POWER CO.
 Burke Extension
 PLAT TO ACCOMPANY RIGHT-OF-WAY AGREEMENT WITH
 AS SHOWN
 DISTRICT Nelson YORK COUNTY VIRGINIA
 SCALE: 1 INCH = 400 FT.
 C.W.L. WMBG # 1551

DRAWER NO. SHEET NO.

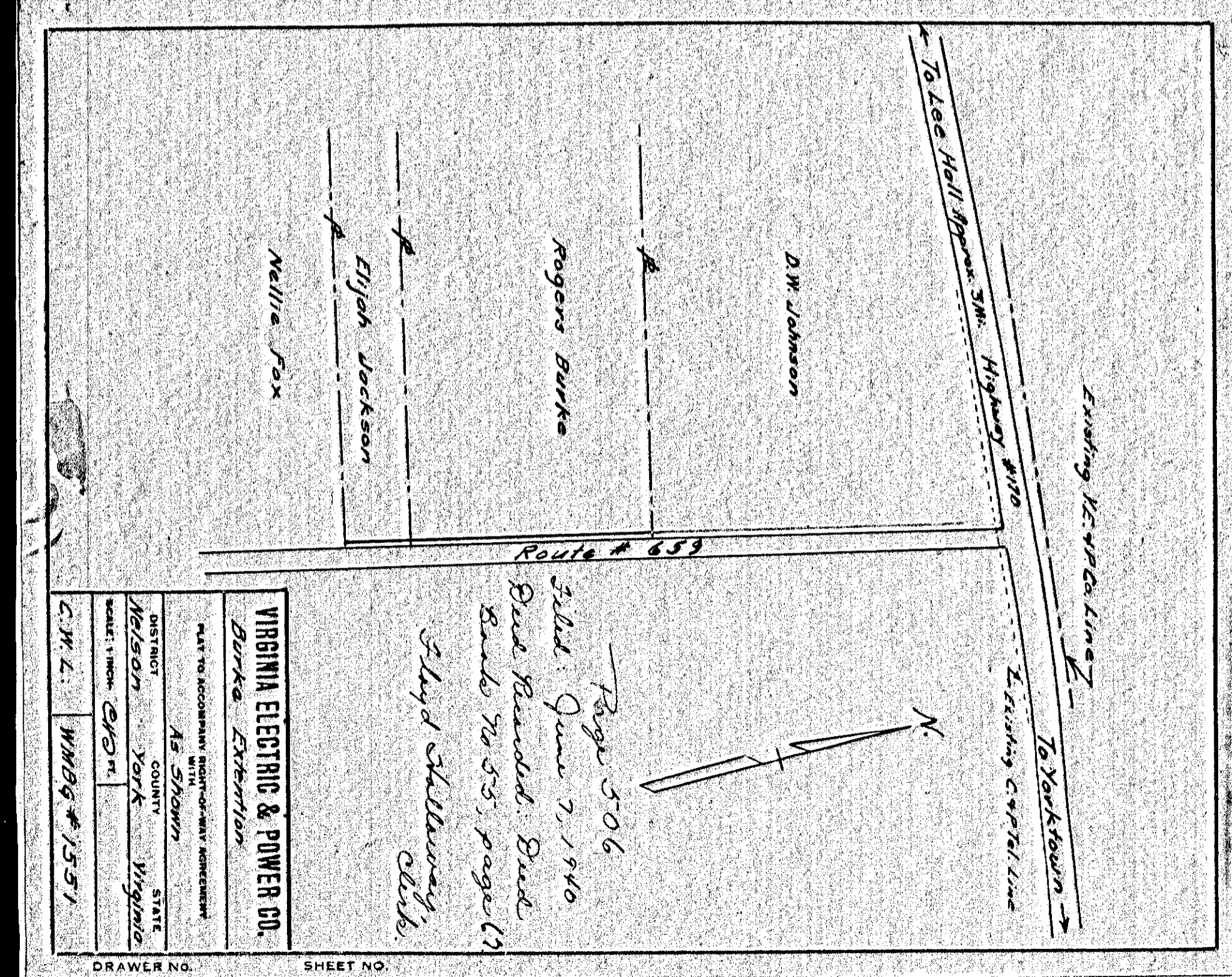
505

502



VIRGINIA ELECTRIC & POWER CO.
 Thomas Extension
 PLAT TO ACCOMPANY RIGHT-OF-WAY AGREEMENT WITH
 Bethna I. Thomas
 DISTRICT BRATTON YORK COUNTY VIRGINIA
 SCALE: 1 INCH = 400 FT.
 C.W.L. WMBG # 1552

DRAWER NO. SHEET NO.

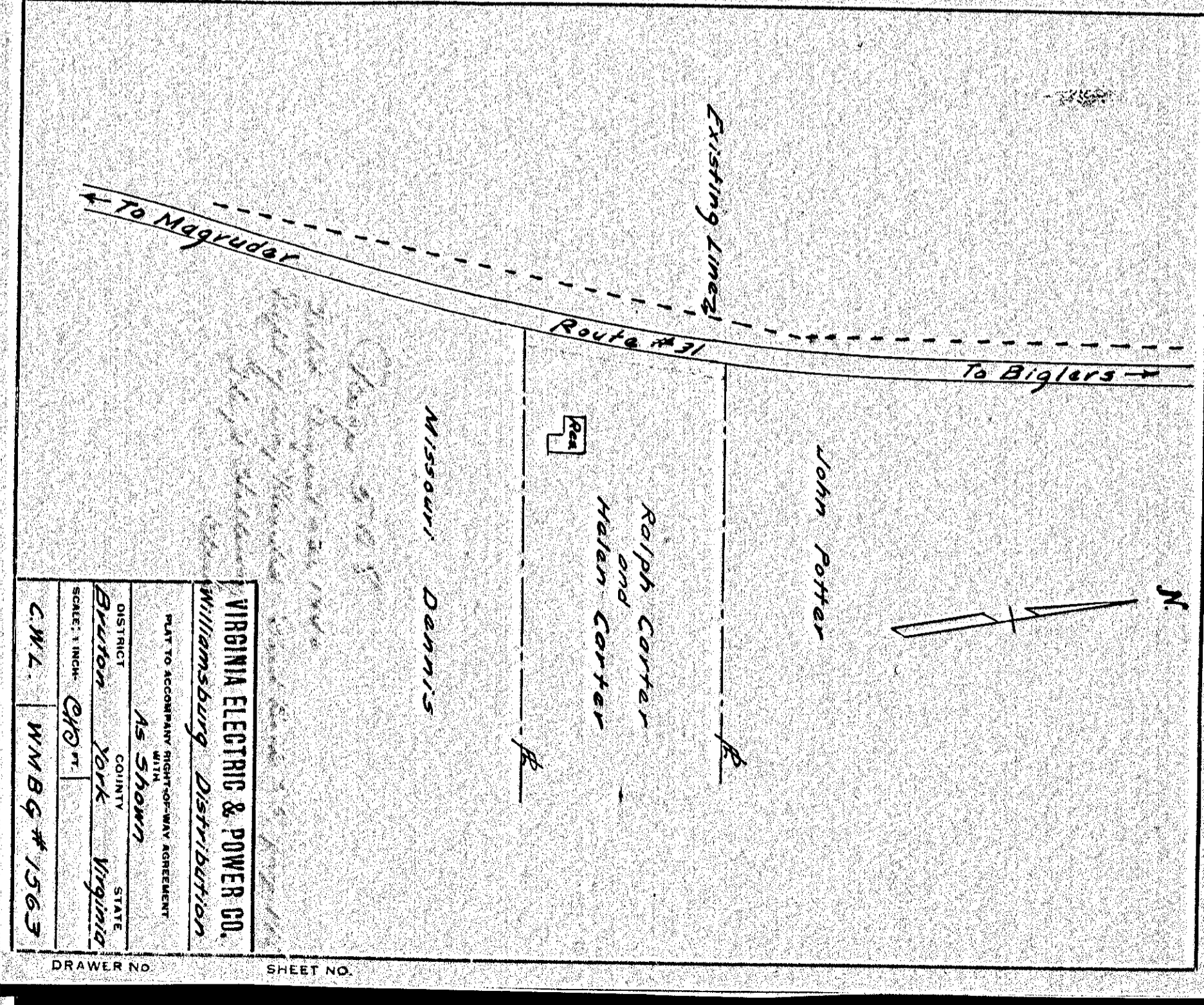


VIRGINIA ELECTRIC & POWER CO.
 Burke Extension
 PLAT TO ACCOMPANY RIGHT-OF-WAY AGREEMENT WITH
 AS SHOWN
 DISTRICT Nelson YORK COUNTY VIRGINIA
 SCALE: 1 INCH = 400 FT.
 C.W.L. WMBG # 1551

DRAWER NO. SHEET NO.

506

508



VIRGINIA ELECTRIC & POWER CO.
 Williamsburg Distribution
 PLAT TO ACCOMPANY RIGHT-OF-WAY AGREEMENT WITH
 As Shown
 DISTRICT BRATTON YORK COUNTY VIRGINIA
 SCALE: 1 INCH = 400 FT.
 C.W.L. WMBG # 1563

DRAWER NO. SHEET NO.