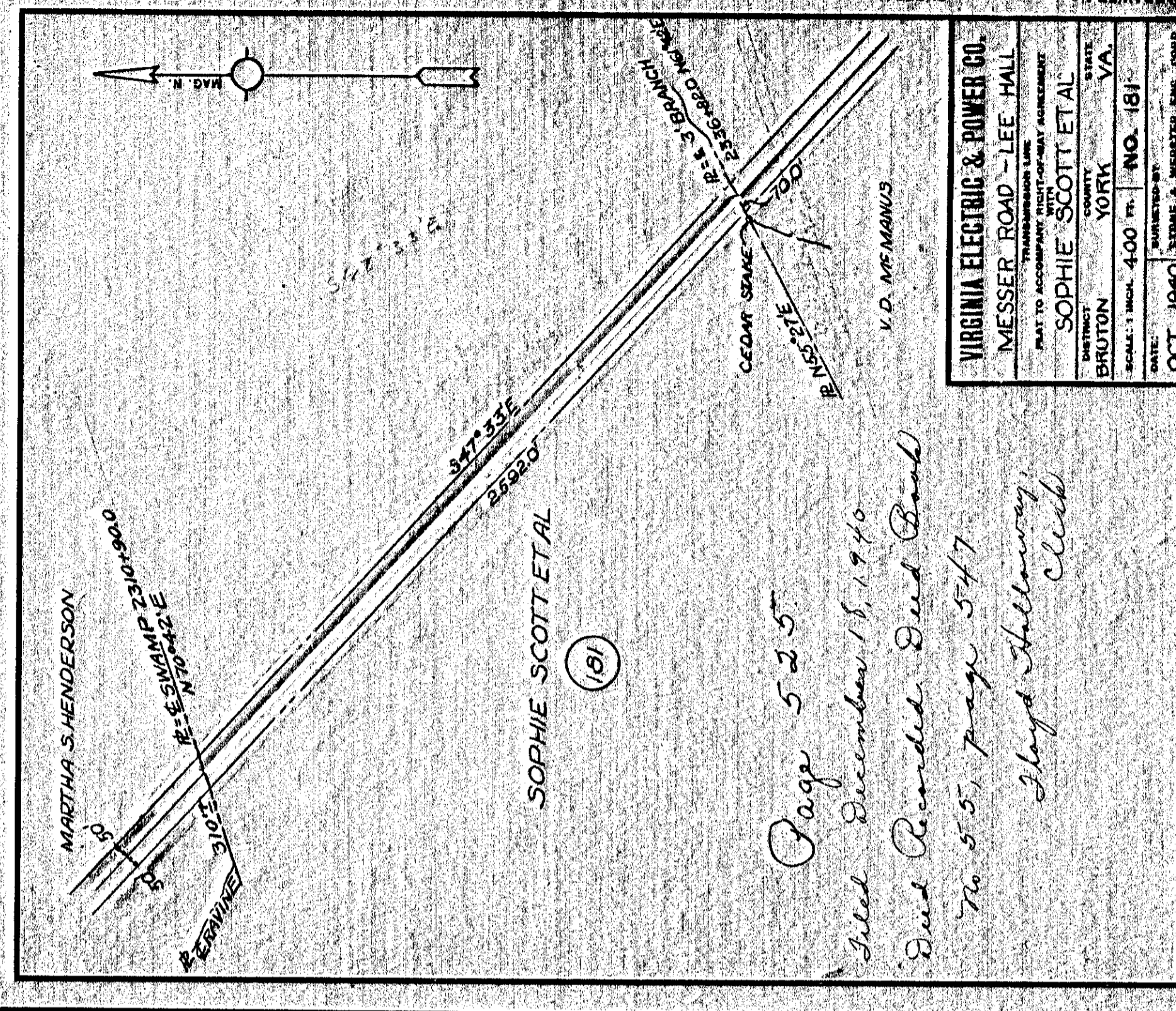


Page 524  
 Filed December 18, 1940  
 Deed Recorded in Deed Book  
 No 55, page 545  
 Floyd Holloway, Clerk

VIRGINIA ELECTRIC & POWER CO.  
 MESSER ROAD - LEE HALL  
 TRANSMISSION LINE  
 PLAT TO ACCOMPANY RIGHT-OF-WAY AGREEMENT  
 ALBERT H. NEWMAN  
 DISTRICT BRUTON COUNTY STATE VA.  
 SCALE: 1 INCH = 400 FT. NO. 179A  
 DATE: OCT. 1940 SURVEYED BY STONE & WEBSTER ENGR. CORP.

524

526

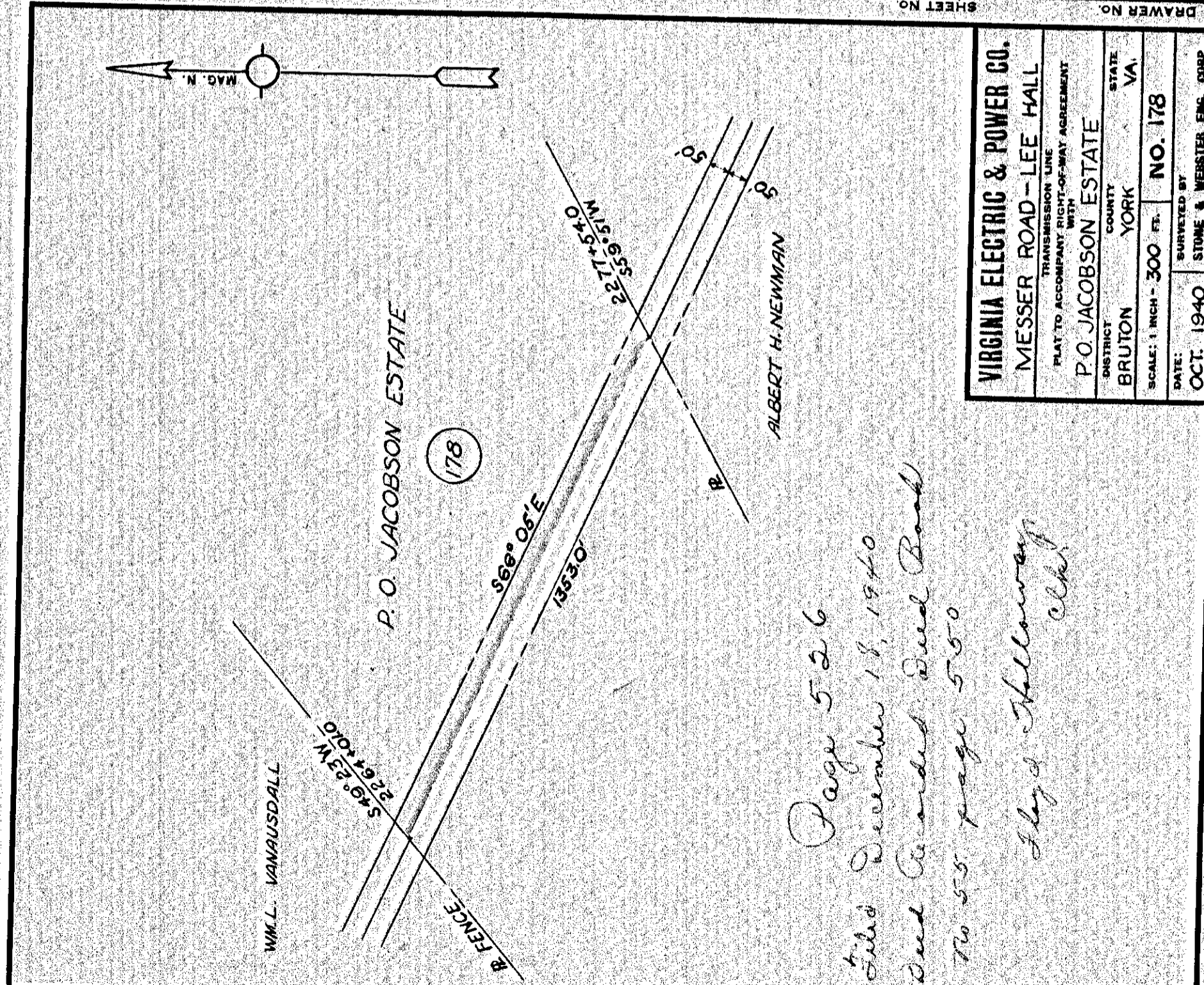


Page 525  
 Filed December 18, 1940  
 Deed Recorded in Deed Book  
 No 55, page 547  
 Floyd Holloway, Clerk

VIRGINIA ELECTRIC & POWER CO.  
 MESSER ROAD - LEE HALL  
 TRANSMISSION LINE  
 PLAT TO ACCOMPANY RIGHT-OF-WAY AGREEMENT  
 SOPHIE SCOTT ET AL  
 DISTRICT BRUTON COUNTY STATE VA.  
 SCALE: 1 INCH = 400 FT. NO. 181  
 DATE: OCT. 1940 SURVEYED BY STONE & WEBSTER ENGR. CORP.

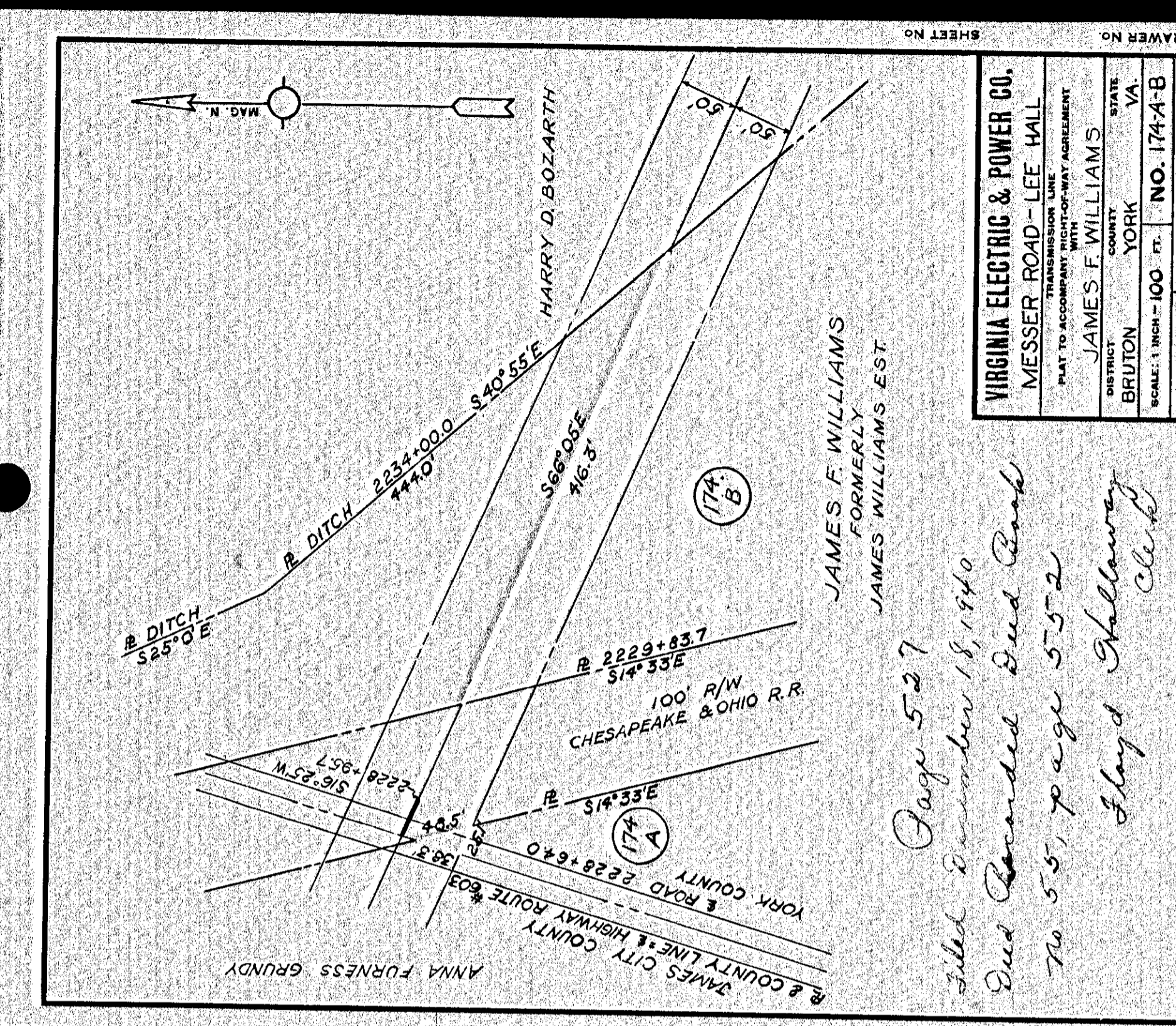
525

527



Page 526  
 Filed December 18, 1940  
 Deed Recorded in Deed Book  
 No 55, page 550  
 Floyd Holloway, Clerk

VIRGINIA ELECTRIC & POWER CO.  
 MESSER ROAD - LEE HALL  
 TRANSMISSION LINE  
 PLAT TO ACCOMPANY RIGHT-OF-WAY AGREEMENT  
 WITH  
 P.O. JACOBSON ESTATE  
 DISTRICT BRUTON COUNTY STATE VA.  
 SCALE: 1 INCH = 300 FT. NO. 178  
 DATE: OCT. 1940 SURVEYED BY STONE & WEBSTER ENGR. CORP.



Page 527  
 Filed December 18, 1940  
 Deed Recorded in Deed Book  
 No 55, page 552  
 Floyd Holloway, Clerk

VIRGINIA ELECTRIC & POWER CO.  
 MESSER ROAD - LEE HALL  
 TRANSMISSION LINE  
 PLAT TO ACCOMPANY RIGHT-OF-WAY AGREEMENT  
 JAMES F. WILLIAMS  
 DISTRICT BRUTON COUNTY STATE VA.  
 SCALE: 1 INCH = 100 FT. NO. 174-B  
 DATE: OCT. 1940 SURVEYED BY STONE & WEBSTER ENGR. CORP.