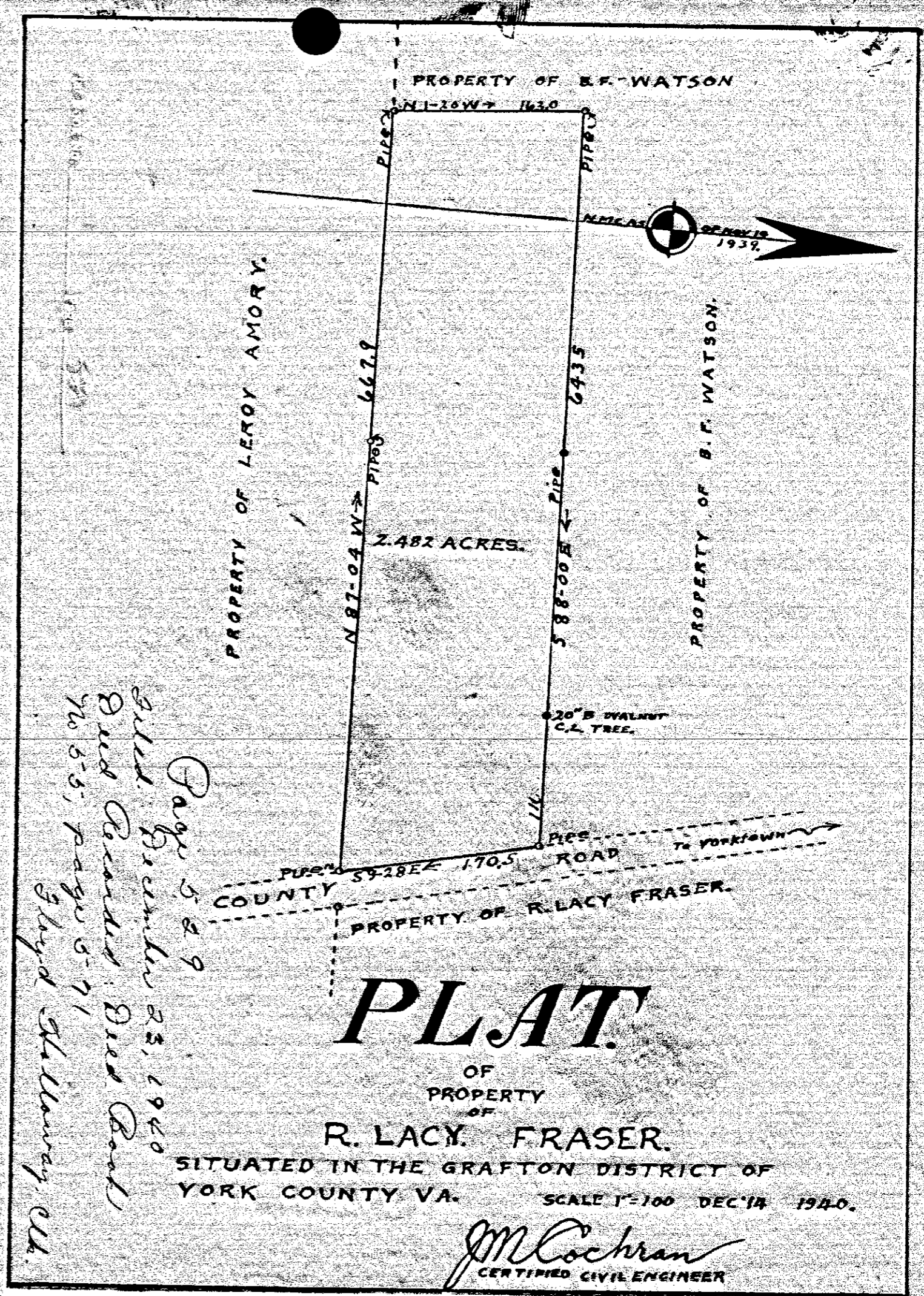


Page 528
 Filed December 18, 1940
 Deed Recorded: Deed
 Book No 55, page 554
 Floyd Hallaway Clerk

VIRGINIA ELECTRIC & POWER CO.		
MESSER ROAD-LEE HALL		
TRANSMISSION LINE		
PLAT TO ACCOMPANY RIGHT-OF-WAY AGREEMENT WITH		
SAMUEL W. ROBERTS		
DISTRICT	COUNTY	STATE
BRUTON	YORK	VA.
SCALE: 1 INCH = 200 FT.	NO. 207 ABC	
DATE:	SURVEYED BY:	
NOV. 1940	STONE & WEBSTER, ENG. CORP.	

528



Page 529
 Filed December 23, 1940
 Deed Recorded: Deed Book
 No 55, page 571
 Floyd Hallaway Clerk

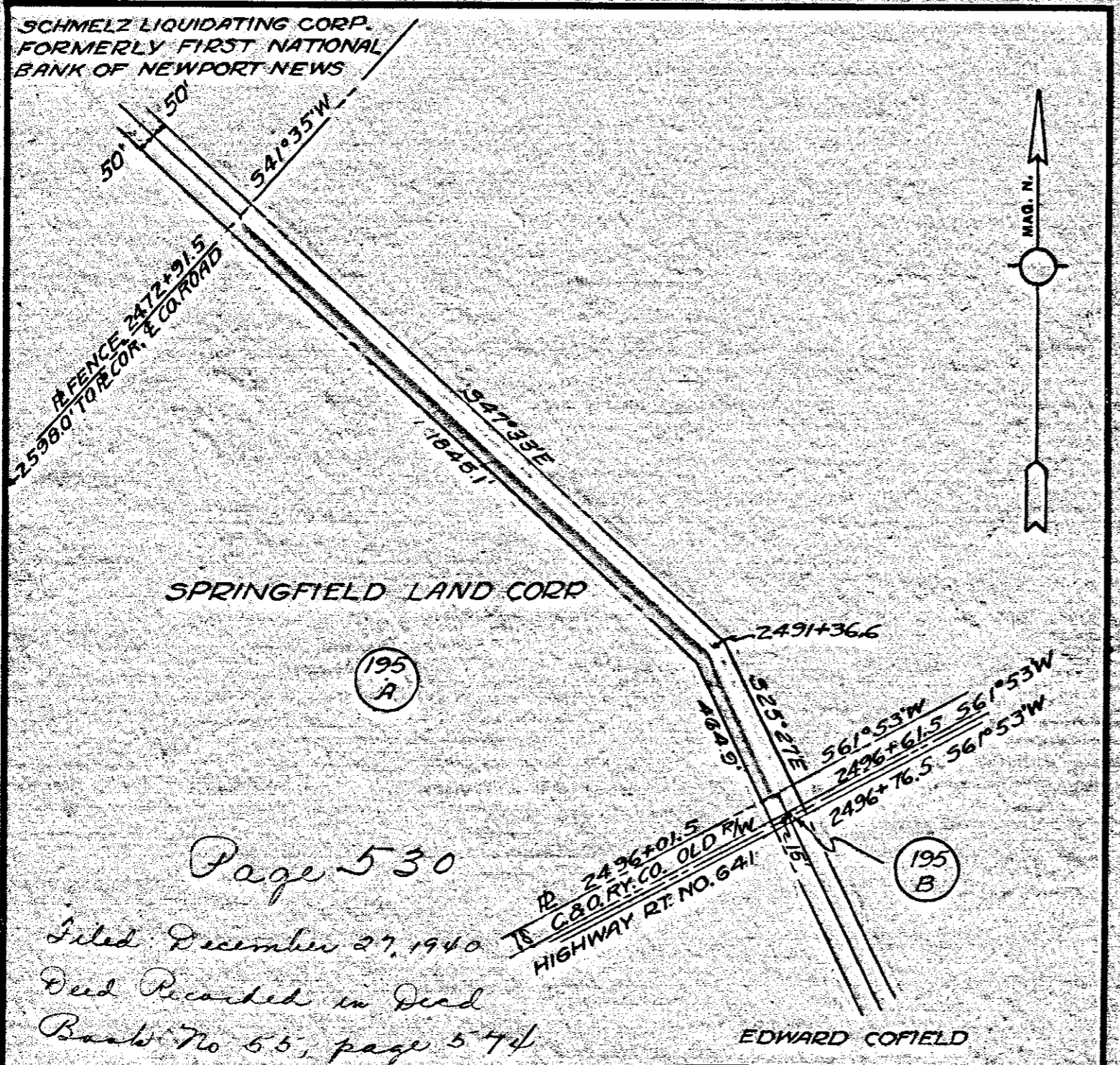
PLAT

OF PROPERTY OF
 R. LACY FRASER
 SITUATED IN THE GRAFTON DISTRICT OF
 YORK COUNTY VA. SCALE 1"=100 DEC 14 1940.

J.M. Cochran
 CERTIFIED CIVIL ENGINEER

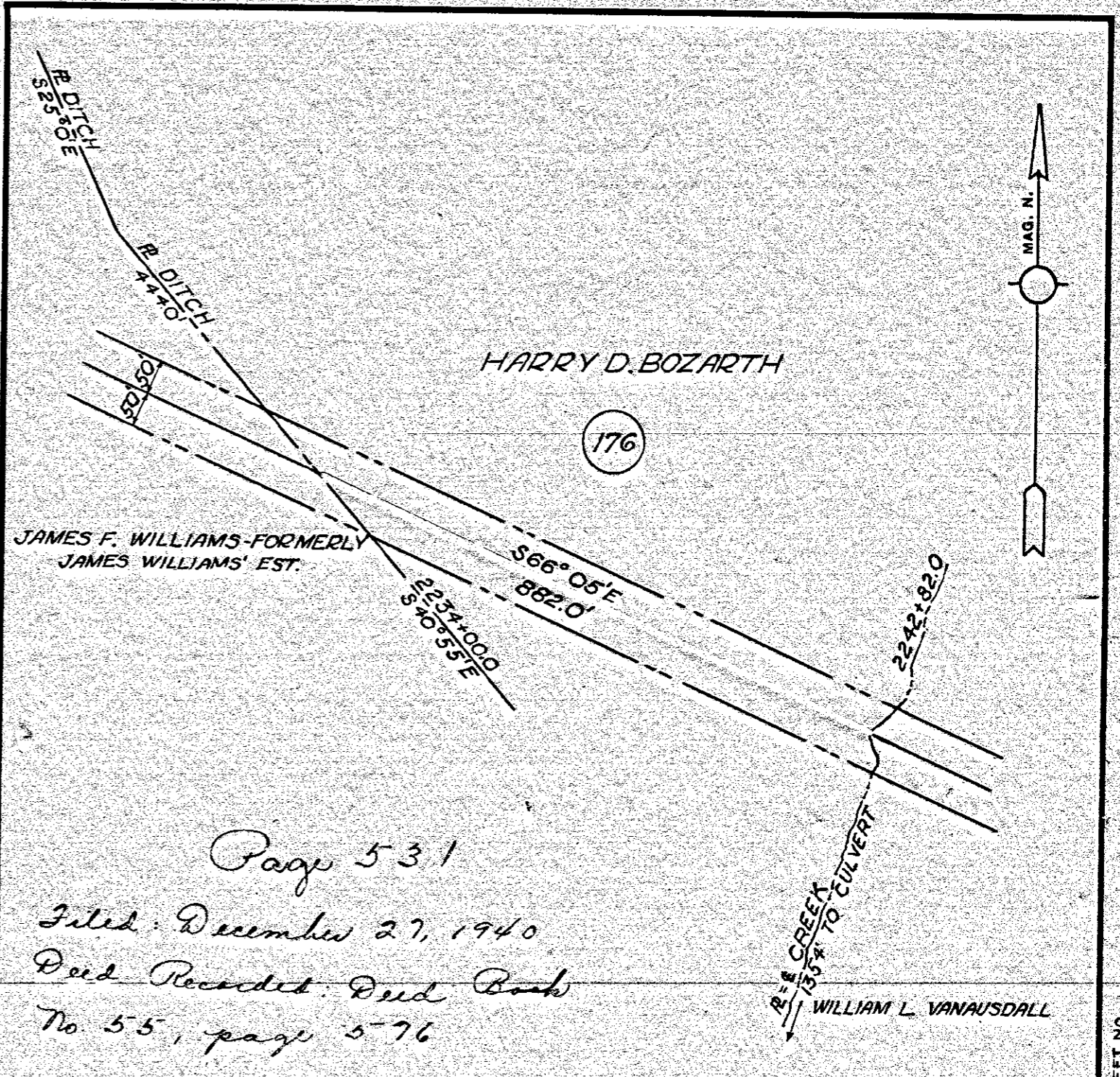
529
531

530



Page 530
 Filed December 27, 1940
 Deed Recorded in Deed
 Book No 55, page 574
 Floyd Hallaway Clerk

VIRGINIA ELECTRIC & POWER CO.		
MESSER ROAD-LEE HALL		
TRANSMISSION LINE		
PLAT TO ACCOMPANY RIGHT-OF-WAY AGREEMENT WITH		
SPRINGFIELD LAND CORP.		
DISTRICT	COUNTY	STATE
BRUTON	YORK	VA.
SCALE: 1 INCH = 400 FT.	NO. 195 A	
DATE:	SURVEYED BY:	
	STONE & WEBSTER, ENG. CORP.	



Page 531
 Filed December 27, 1940
 Deed Recorded: Deed Book
 No 55, page 576
 Floyd Hallaway Clerk

VIRGINIA ELECTRIC & POWER CO.		
MESSER ROAD-LEE HALL		
TRANSMISSION LINE		
PLAT TO ACCOMPANY RIGHT-OF-WAY AGREEMENT WITH		
HARRY D. BOZARTH		
DISTRICT	COUNTY	STATE
BRUTON	YORK	VA.
SCALE: 1 INCH = 200 FT.	NO. 176	
DATE:	SURVEYED BY:	
OCT. 1940	STONE & WEBSTER, ENG. CORP.	