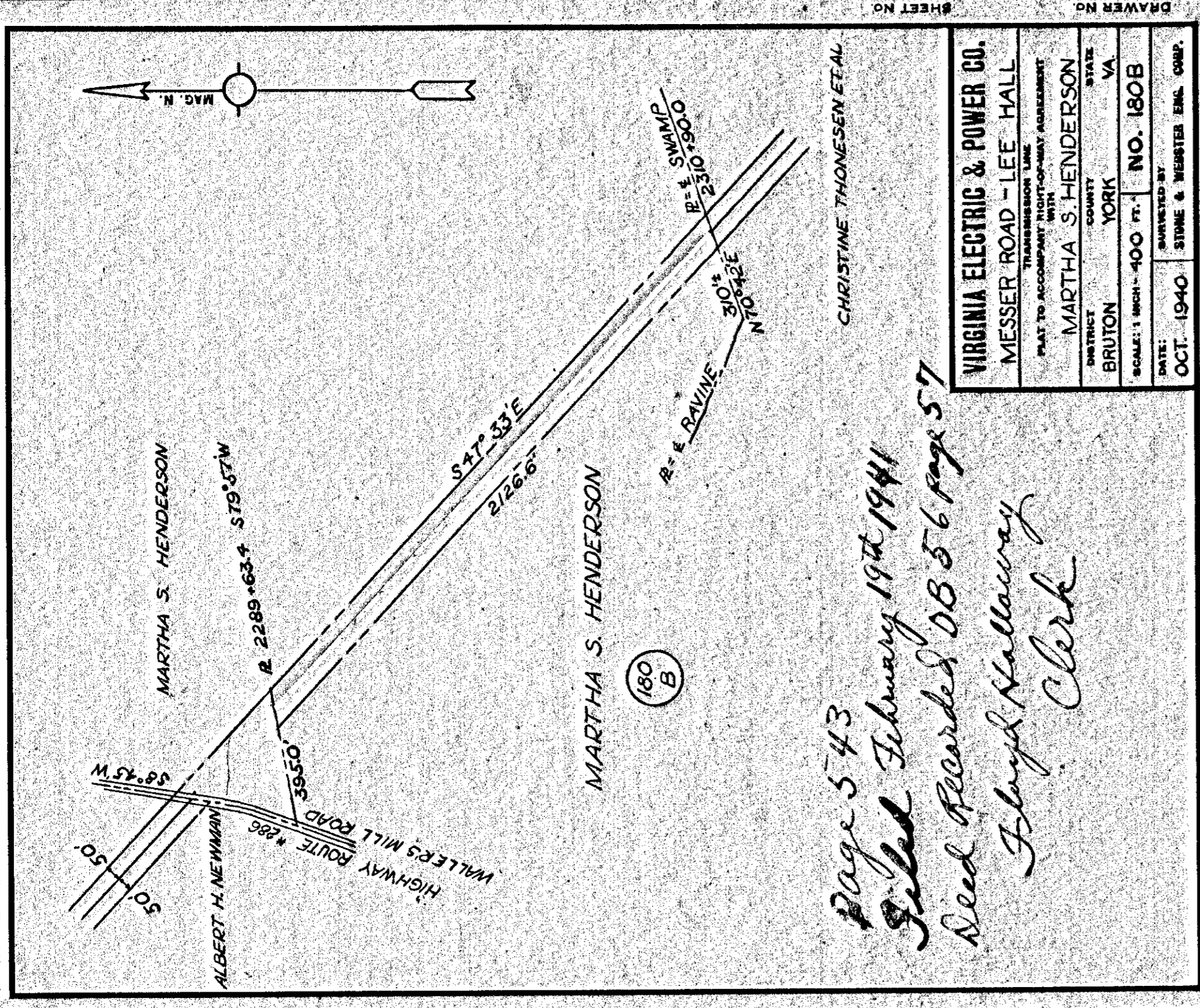


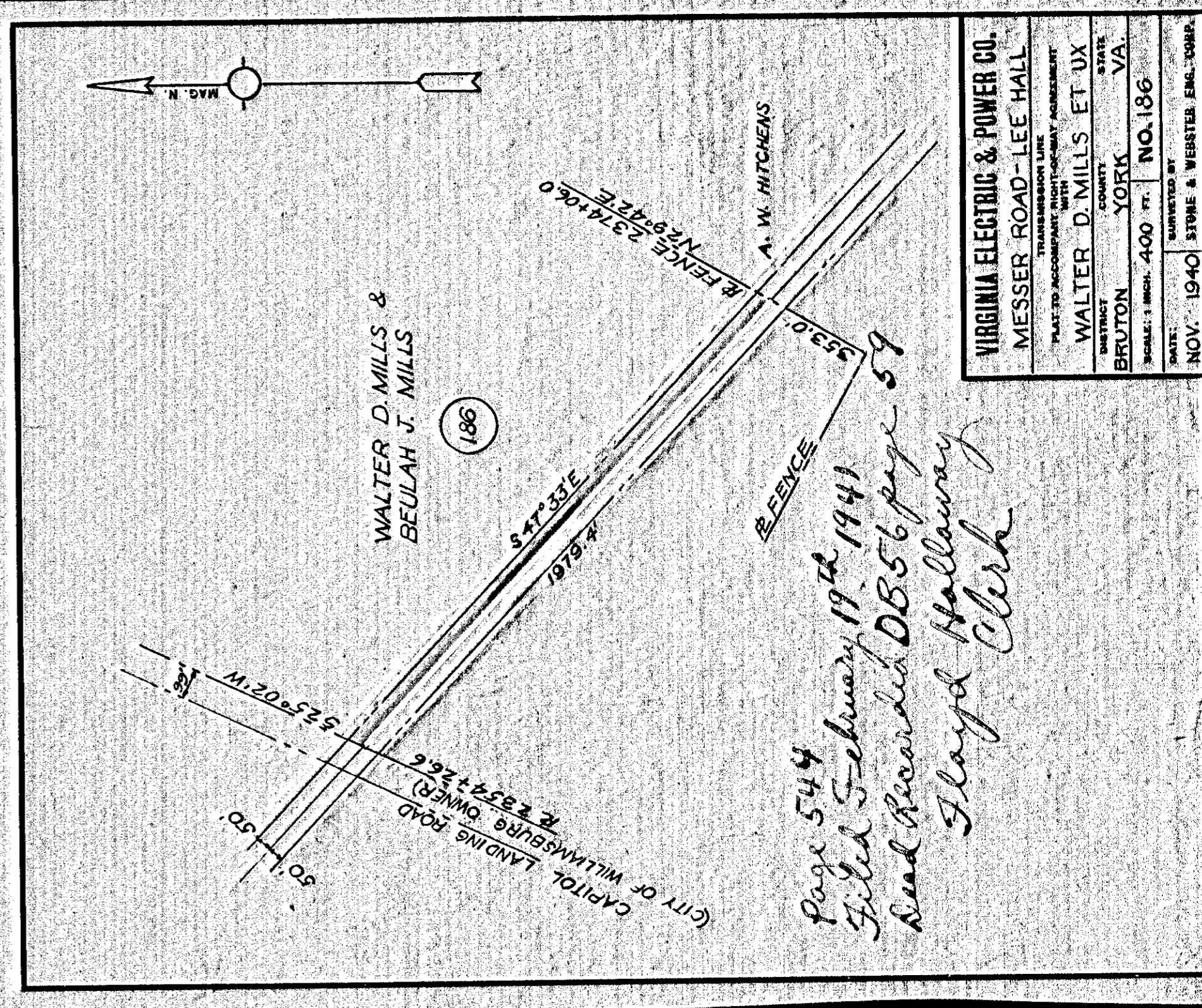
Page 542  
 Filed February 19th 1941  
 Need Recorded DB 56 p. 55  
 Floyd Hallaway  
 Clerk

VIRGINIA ELECTRIC & POWER CO.	
MESSER ROAD - LEE HALL	
PLAT TO ACCOMPANY RIGHT-OF-WAY AGREEMENT WITH	
DISTRICT	BRUTON
COUNTY	YORK
STATE	VA
SCALE:	1 INCH = 200 FT.
NO.	193-B
DATE:	SEPT. 1940
SUBMITTED BY	
STONE & WEBSTER ENGR. CORP.	



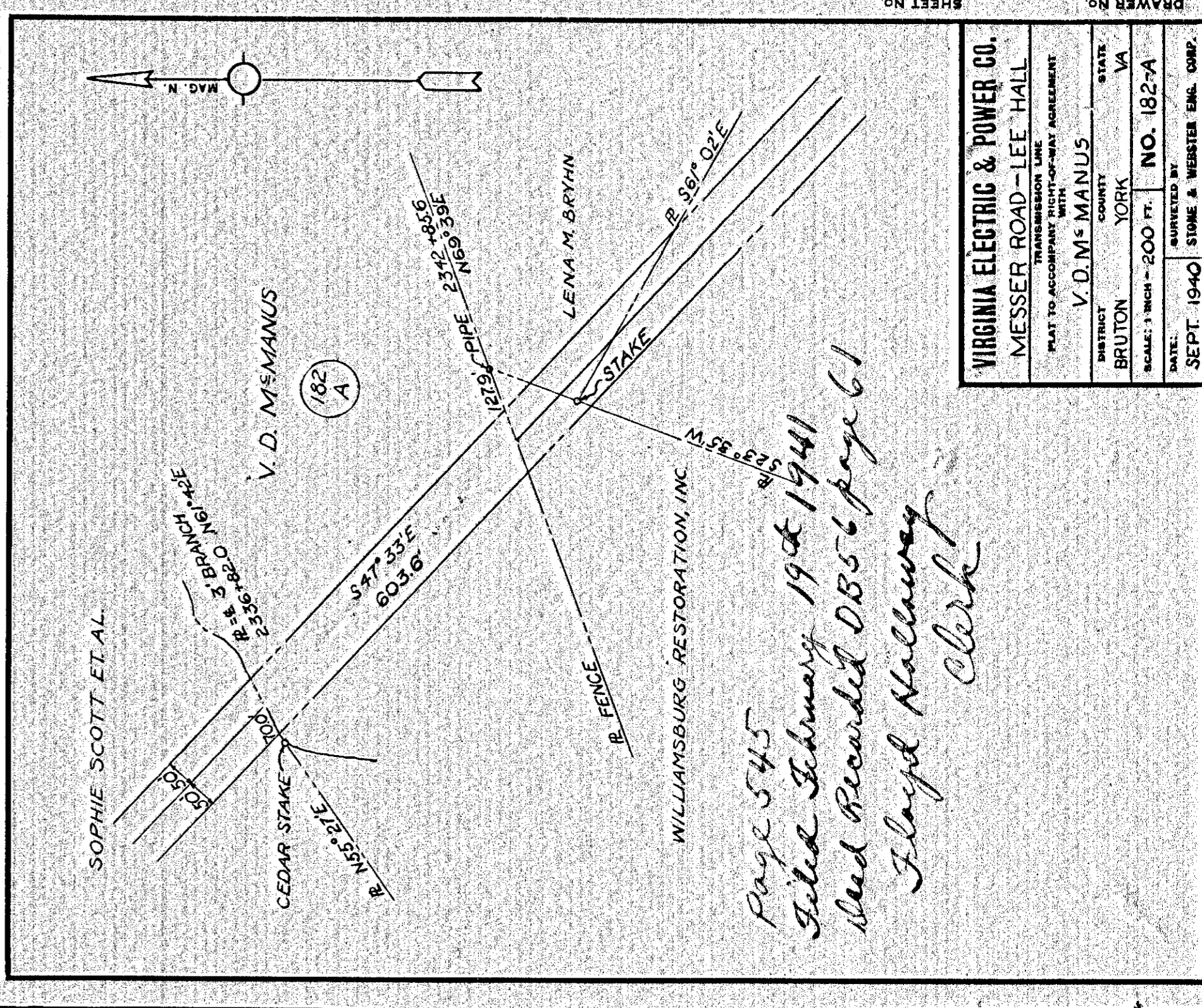
Page 543  
 Filed February 19th 1941  
 Need Recorded DB 56 page 57  
 Floyd Hallaway  
 Clerk

VIRGINIA ELECTRIC & POWER CO.	
MESSER ROAD - LEE HALL	
PLAT TO ACCOMPANY RIGHT-OF-WAY AGREEMENT WITH	
DISTRICT	BRUTON
COUNTY	YORK
STATE	VA
SCALE:	1 INCH = 400 FT.
NO.	180-B
DATE:	OCT. 1940
SUBMITTED BY	
STONE & WEBSTER ENGR. CORP.	



Page 544  
 Filed February 19th 1941  
 Need Recorded DB 56 page 59  
 Floyd Hallaway  
 Clerk

VIRGINIA ELECTRIC & POWER CO.	
MESSER ROAD - LEE HALL	
PLAT TO ACCOMPANY RIGHT-OF-WAY AGREEMENT WITH	
DISTRICT	BRUTON
COUNTY	YORK
STATE	VA
SCALE:	1 INCH = 400 FT.
NO.	186
DATE:	NOV. 1940
SUBMITTED BY	
STONE & WEBSTER ENGR. CORP.	



Page 545  
 Filed February 19th 1941  
 Need Recorded DB 56 page 61  
 Floyd Hallaway  
 Clerk

VIRGINIA ELECTRIC & POWER CO.	
MESSER ROAD - LEE HALL	
PLAT TO ACCOMPANY RIGHT-OF-WAY AGREEMENT WITH	
DISTRICT	BRUTON
COUNTY	YORK
STATE	VA
SCALE:	1 INCH = 200 FT.
NO.	182-A
DATE:	SEPT. 1940
SUBMITTED BY	
STONE & WEBSTER ENGR. CORP.	

542

544

543

545