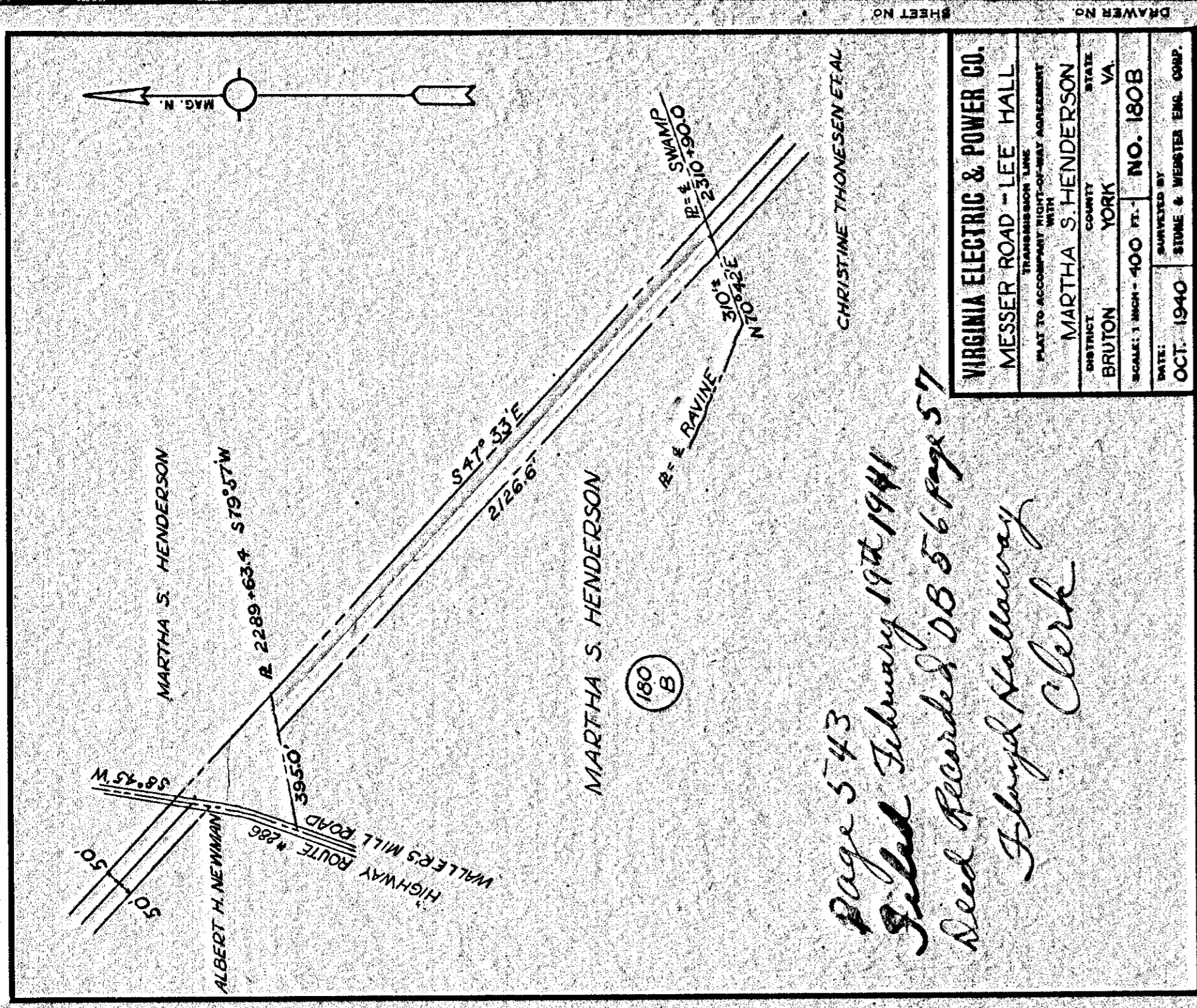


Page 542
 Filed February 19th 1941
 Need Recorded DB 56 p. 55
 Floyd Hallaway
 Clerk

VIRGINIA ELECTRIC & POWER CO.			
MESSER ROAD - LEE HALL			
PLAT TO ACCOMPANY RIGHT-OF-WAY AGREEMENT WITH			
DISTRICT:	COUNTY:	STATE:	
BRUTON	YORK	VA.	
SCALE:	1 INCH = 200 FT.	NO. 193-B	
DATE:	SUBMITTED BY		
SEPT. 1940	STONE & WEBSTER ENGR. CORP.		

DRAWER NO. SHEET NO.

542
 544

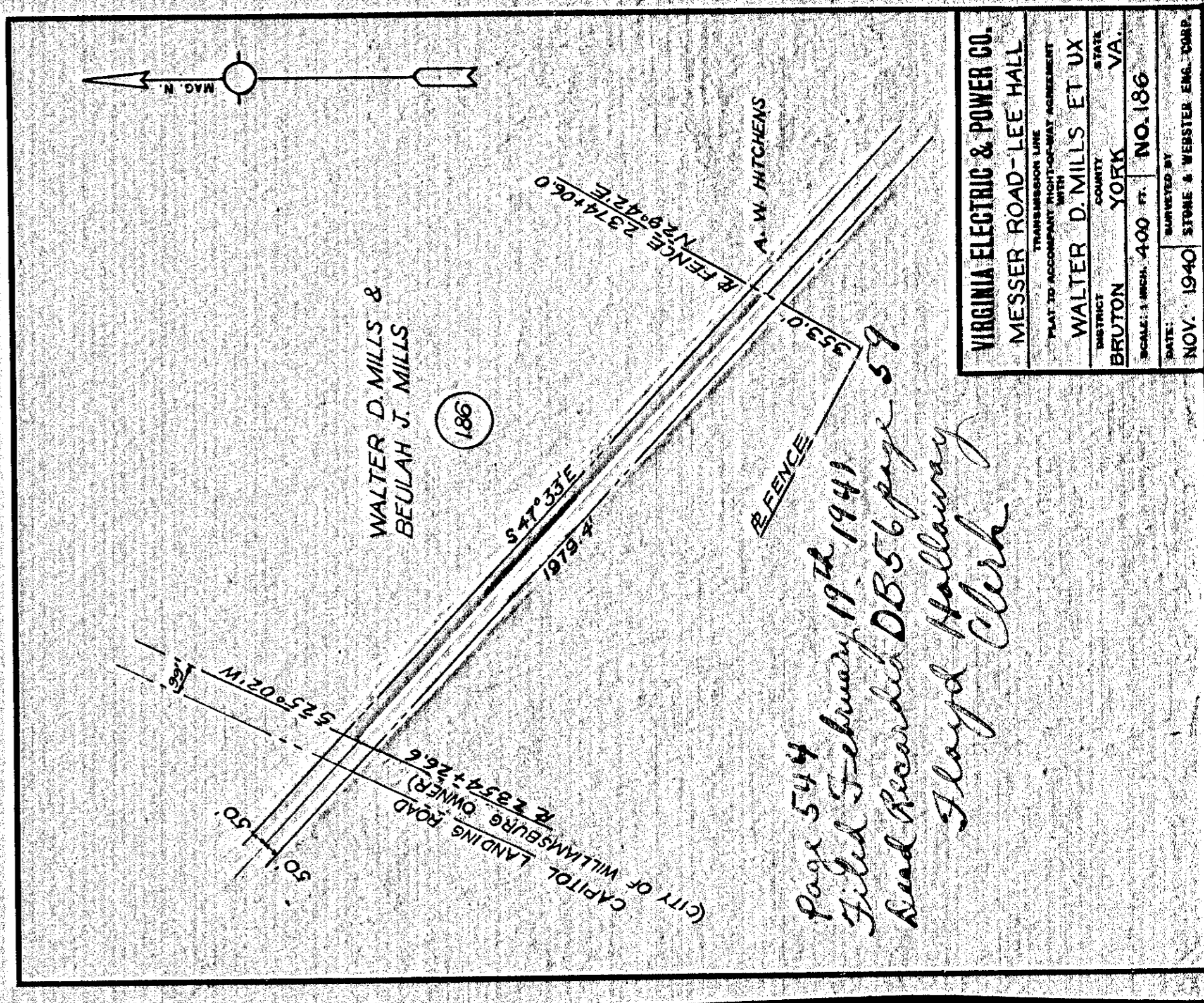


Page 543
 Filed February 19th 1941
 Need Recorded DB 56 page 57
 Floyd Hallaway
 Clerk

VIRGINIA ELECTRIC & POWER CO.			
MESSER ROAD - LEE HALL			
PLAT TO ACCOMPANY RIGHT-OF-WAY AGREEMENT WITH			
DISTRICT:	COUNTY:	STATE:	
BRUTON	YORK	VA.	
SCALE:	1 INCH = 400 FT.	NO. 180-B	
DATE:	SUBMITTED BY		
OCT. 1940	STONE & WEBSTER ENGR. CORP.		

DRAWER NO. SHEET NO.

543
 545

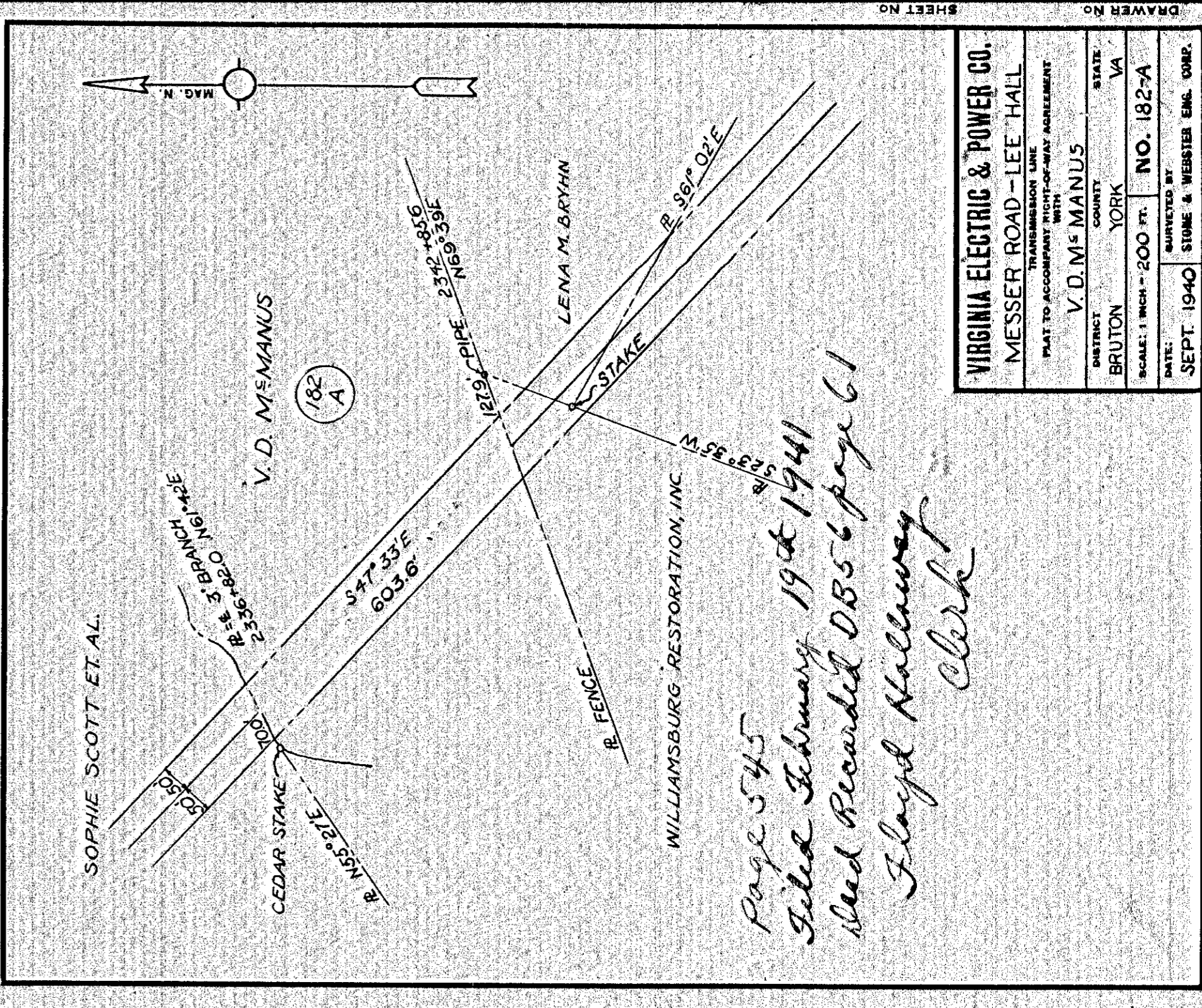


Page 544
 Filed February 19th 1941
 Need Recorded DB 56 page 59
 Floyd Hallaway
 Clerk

VIRGINIA ELECTRIC & POWER CO.			
MESSER ROAD - LEE HALL			
PLAT TO ACCOMPANY RIGHT-OF-WAY AGREEMENT WITH			
DISTRICT:	COUNTY:	STATE:	
BRUTON	YORK	VA.	
SCALE:	1 INCH = 400 FT.	NO. 186	
DATE:	SUBMITTED BY		
NOV. 1940	STONE & WEBSTER ENGR. CORP.		

DRAWER NO. SHEET NO.

542
 544



Page 545
 Filed February 19th 1941
 Need Recorded DB 56 page 61
 Floyd Hallaway
 Clerk

VIRGINIA ELECTRIC & POWER CO.			
MESSER ROAD - LEE HALL			
PLAT TO ACCOMPANY RIGHT-OF-WAY AGREEMENT WITH			
DISTRICT:	COUNTY:	STATE:	
BRUTON	YORK	VA.	
SCALE:	1 INCH = 200 FT.	NO. 182-A	
DATE:	SUBMITTED BY		
SEPT. 1940	STONE & WEBSTER ENGR. CORP.		

DRAWER NO. SHEET NO.

542
 544