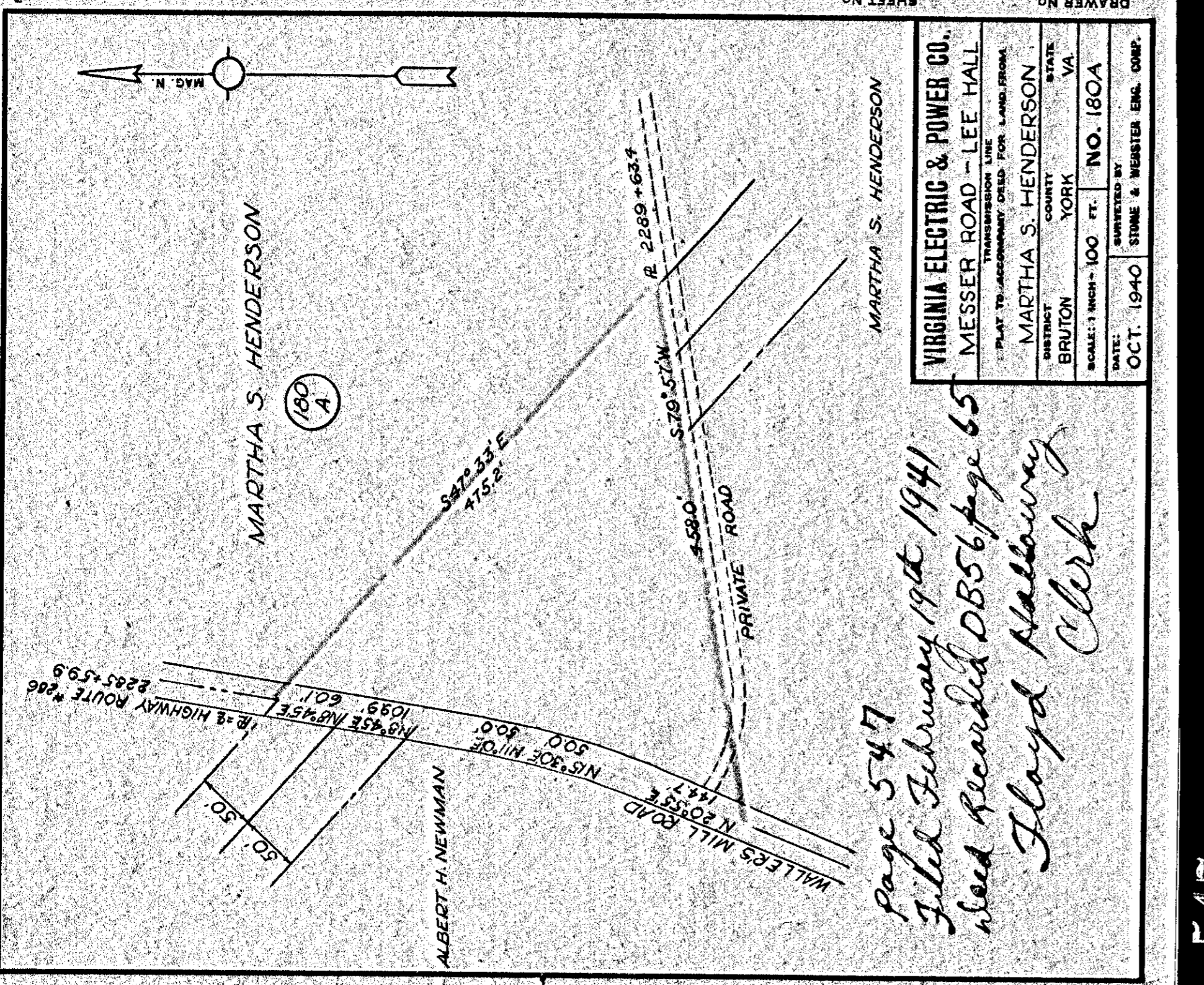


Page 546
 Filed February 19th 1941
 Need Recorded DB556 page 63
 Floyd Hallberry
 Clerk

DRAWER NO.		SHEET NO.	
VIRGINIA ELECTRIC & POWER CO. MESSER ROAD - LEE HALL <small>PLAT TO ACCOMPANY RIGHT-OF-WAY AGREEMENT</small>			
DISTRICT	COUNTY	STATE	
BRUTON	YORK	VA.	
SCALE: 1 INCH = 200 FT.	NO. 193-A		
DATE: SEPT. 1940	SURVEYED BY: STONE & WEBSTER ENGR. CORP.		

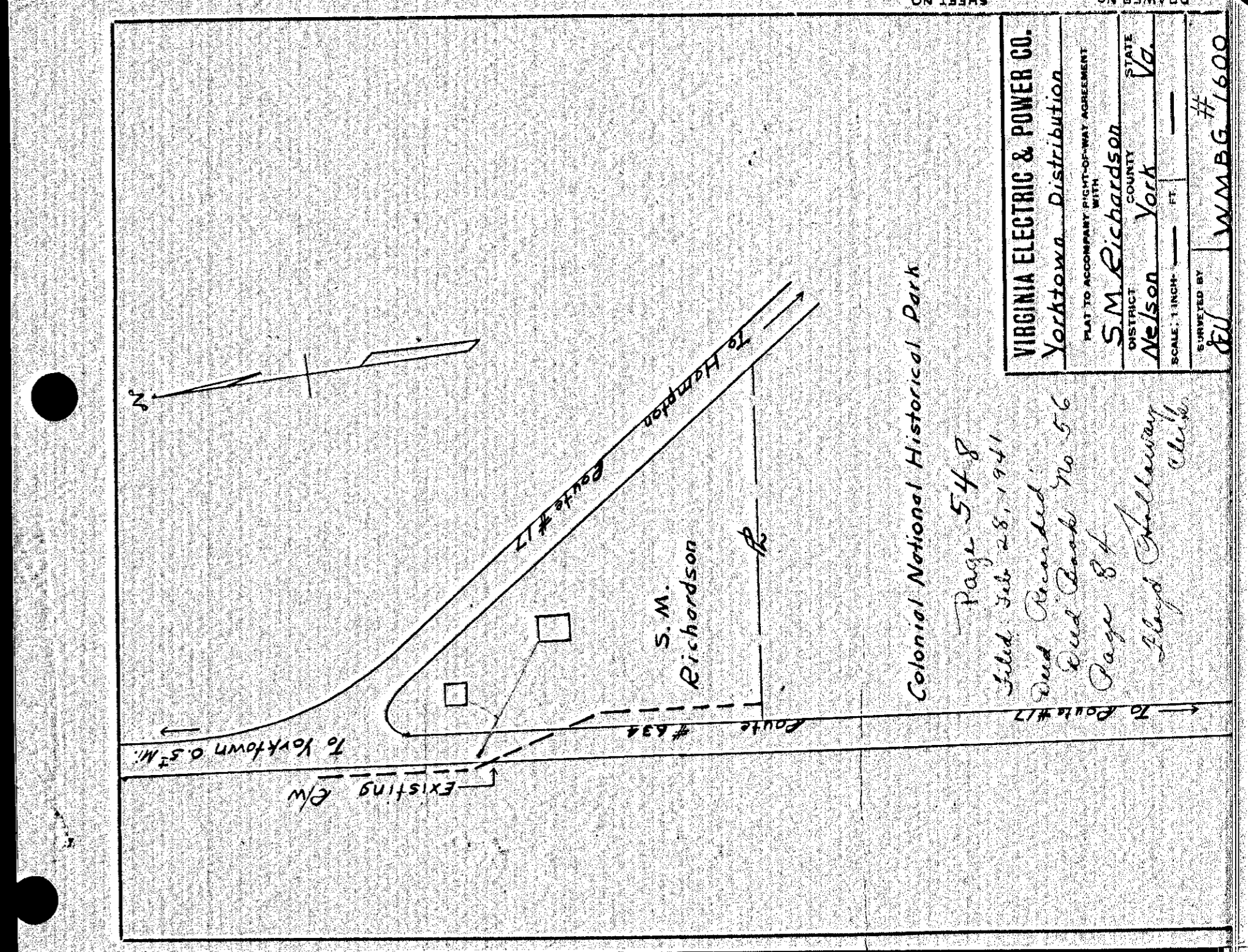


Page 547
 Filed February 19th 1941
 Need Recorded DB556 page 65
 Floyd Hallberry
 Clerk

DRAWER NO.		SHEET NO.	
VIRGINIA ELECTRIC & POWER CO. MESSER ROAD - LEE HALL <small>PLAT TO ACCOMPANY RIGHT-OF-WAY AGREEMENT</small>			
DISTRICT	COUNTY	STATE	
BRUTON	YORK	VA.	
SCALE: 1 INCH = 100 FT.	NO. 180-A		
DATE: OCT. 1940	SURVEYED BY: STONE & WEBSTER ENGR. CORP.		

546

548

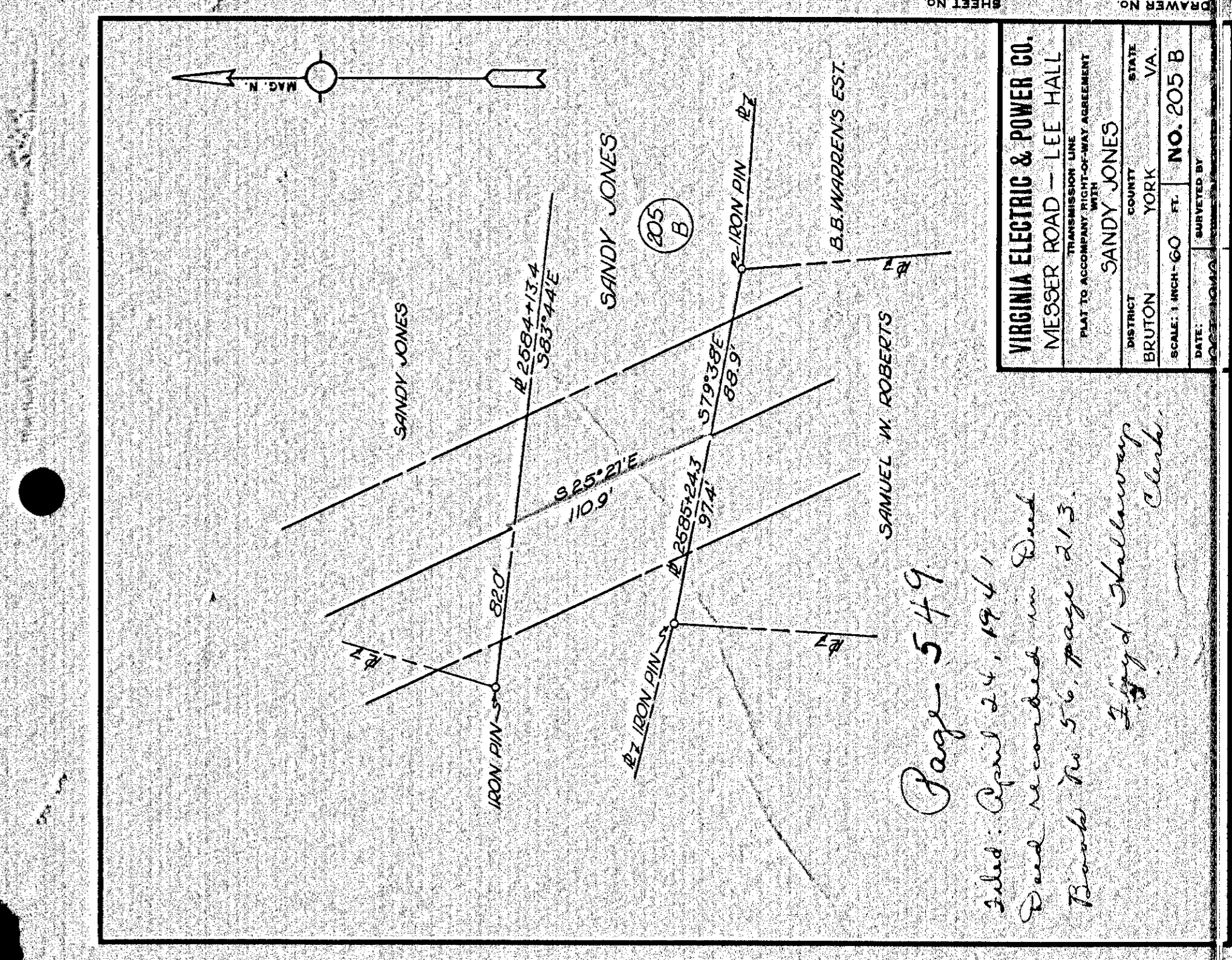


Page 548
 Filed Feb 28, 1941
 Need Recorded No 56
 Page 84
 Floyd Hallberry
 Clerk

DRAWER NO.		SHEET NO.	
VIRGINIA ELECTRIC & POWER CO. Yorktown Distribution <small>PLAT TO ACCOMPANY RIGHT-OF-WAY AGREEMENT</small>			
DISTRICT	COUNTY	STATE	
WELSON	YORK	VA.	
SCALE: 1 INCH = 100 FT.	NO. 1600		
DATE: SEPT. 1940	SURVEYED BY: STONE & WEBSTER ENGR. CORP.		

547

549



Page 549
 Filed April 24, 1941
 Need recorded in Deed
 Book No. 56, page 213
 Floyd Hallberry
 Clerk

DRAWER NO.		SHEET NO.	
VIRGINIA ELECTRIC & POWER CO. MESSER ROAD - LEE HALL <small>PLAT TO ACCOMPANY RIGHT-OF-WAY AGREEMENT</small>			
DISTRICT	COUNTY	STATE	
BRUTON	YORK	VA.	
SCALE: 1 INCH = 100 FT.	NO. 205 B		
DATE: OCT. 1940	SURVEYED BY: STONE & WEBSTER ENGR. CORP.		