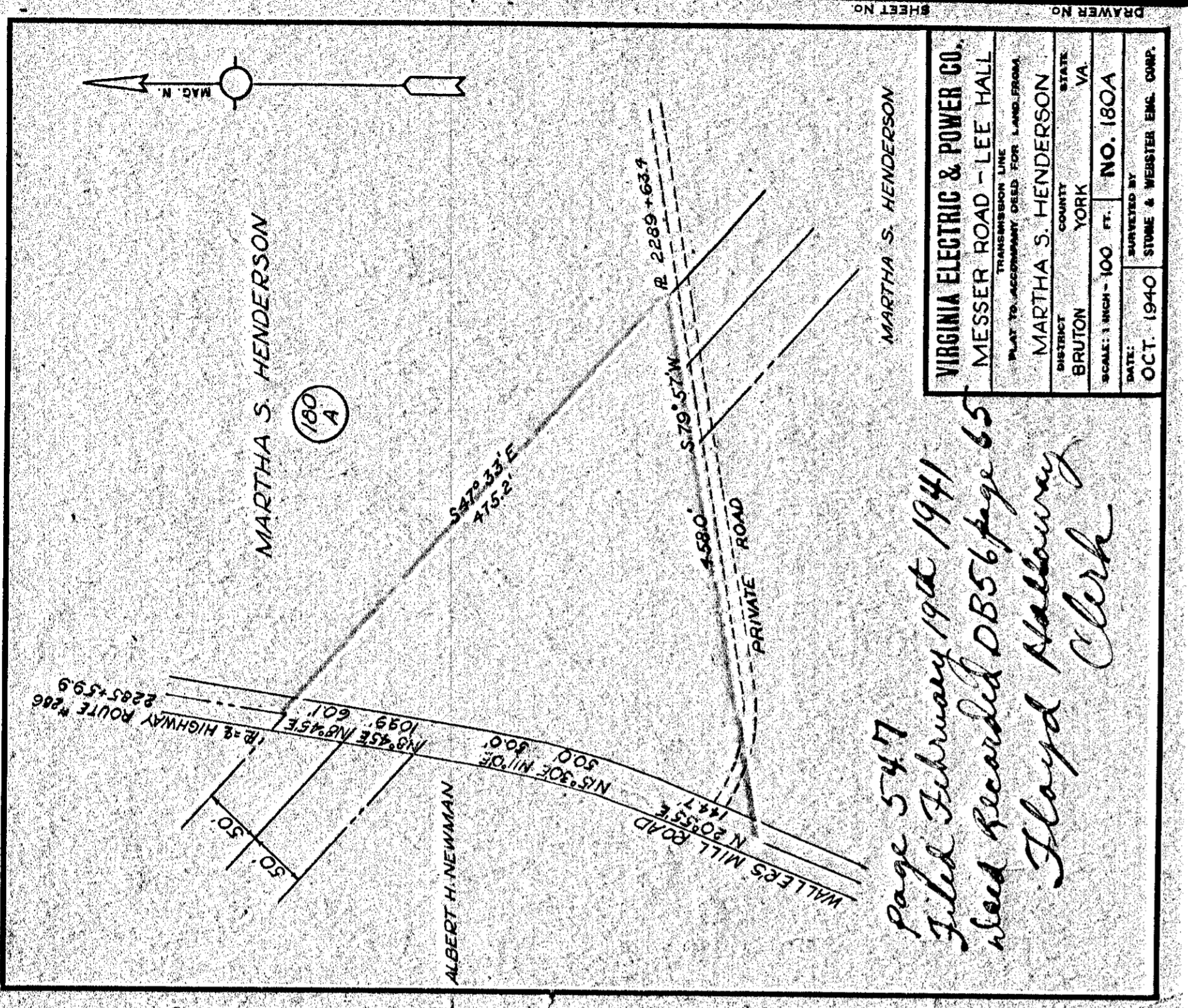


Page 546  
 Filed February 19th 1941  
 Need Recorded DB56 page 63  
 Floyd Hallaway  
 Clerk

VIRGINIA ELECTRIC & POWER CO.	
MESSER ROAD - LEE HALL	
PLAT TO ACCOMPANY DEED FOR LAND FROM	
DISTRICT	ADOLPHUS ASHBY
COUNTY	YORK
STATE	VA.
BRUTON	NO. 193-A
SCALE: 1 INCH = 200 FT.	
DATE: SEPT. 1940	SURVEYED BY: STONE & WEBSTER, ENGR. COMP.

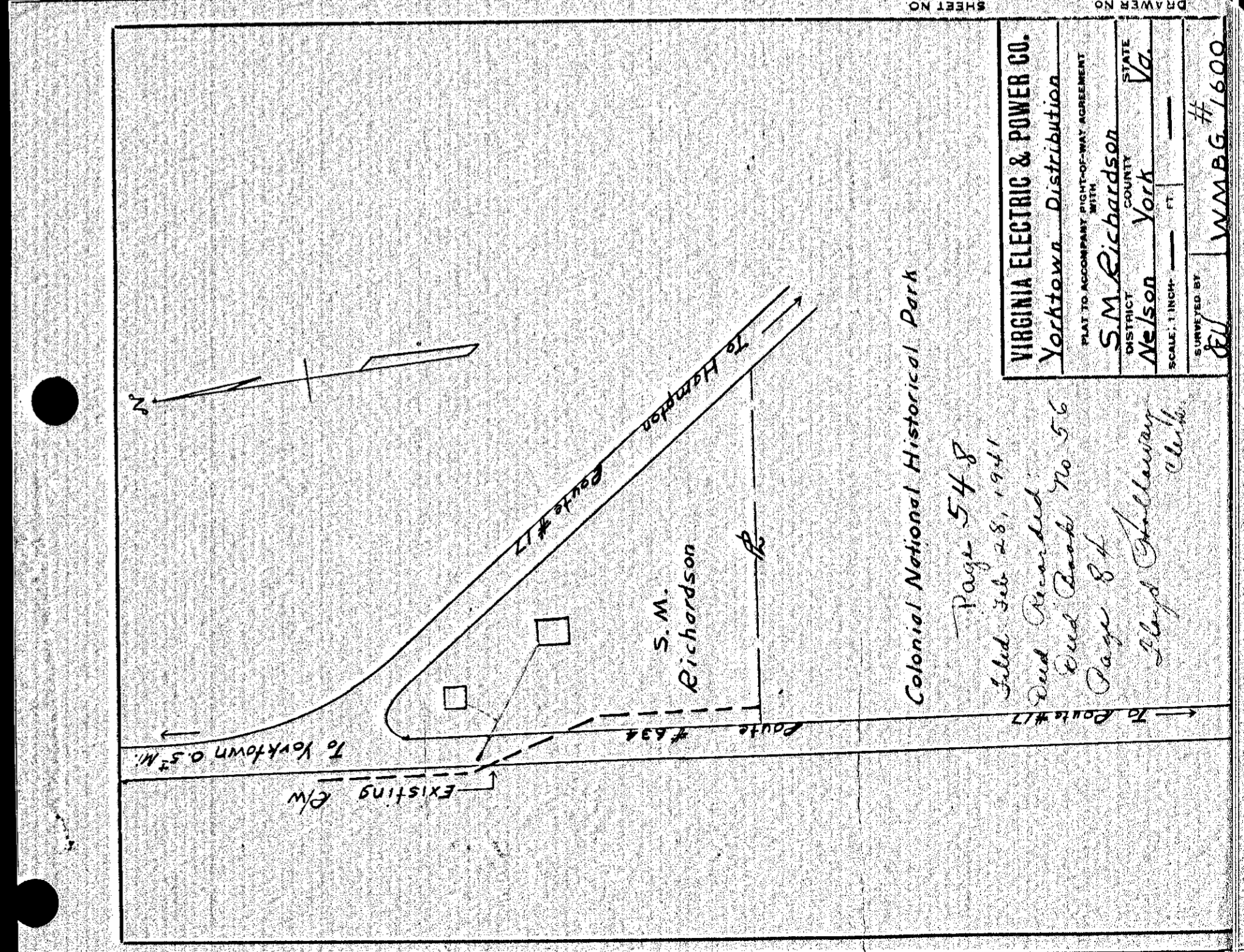


Page 547  
 Filed February 19th 1941  
 Need Recorded DB56 page 65  
 Floyd Hallaway  
 Clerk

VIRGINIA ELECTRIC & POWER CO.	
MESSER ROAD - LEE HALL	
PLAT TO ACCOMPANY DEED FOR LAND FROM	
DISTRICT	MARTHA S. HENDERSON
COUNTY	YORK
STATE	VA.
BRUTON	NO. 180A
SCALE: 1 INCH = 100 FT.	
DATE: OCT. 1940	SURVEYED BY: STONE & WEBSTER, ENGR. COMP.

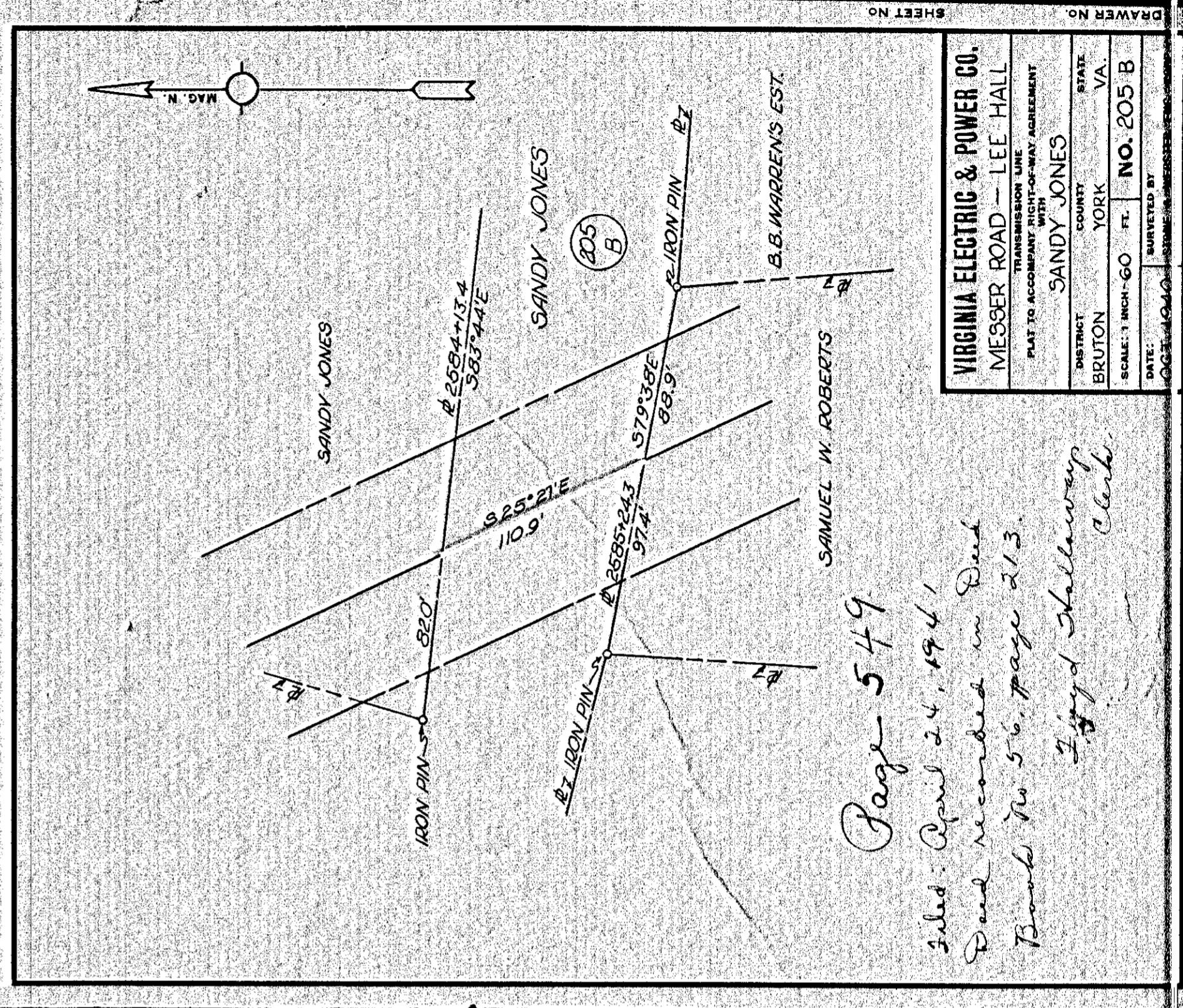
546

548



Page 548  
 Filed Feb 28, 1941  
 Need Recorded  
 Need Book No 56  
 Page 84  
 Floyd Hallaway  
 Clerk

VIRGINIA ELECTRIC & POWER CO.	
Yorktown Distribution	
PLAT TO ACCOMPANY DEED FOR LAND FROM	
DISTRICT	S.M. Richardson
COUNTY	York
STATE	VA.
BRUTON	NO. 205 B
SCALE: 1 INCH = 100 FT.	
DATE: OCT. 1940	SURVEYED BY: WMMBG #1600



Page 549  
 Filed April 24, 1941  
 Need recorded in Book  
 Book No 56, page 213.  
 Floyd Hallaway  
 Clerk

VIRGINIA ELECTRIC & POWER CO.	
MESSER ROAD - LEE HALL	
PLAT TO ACCOMPANY DEED FOR LAND FROM	
DISTRICT	SANDY JONES
COUNTY	YORK
STATE	VA.
BRUTON	NO. 205 B
SCALE: 1 INCH = 100 FT.	
DATE: OCT. 1940	SURVEYED BY: WMMBG #1600

547

549

546

548