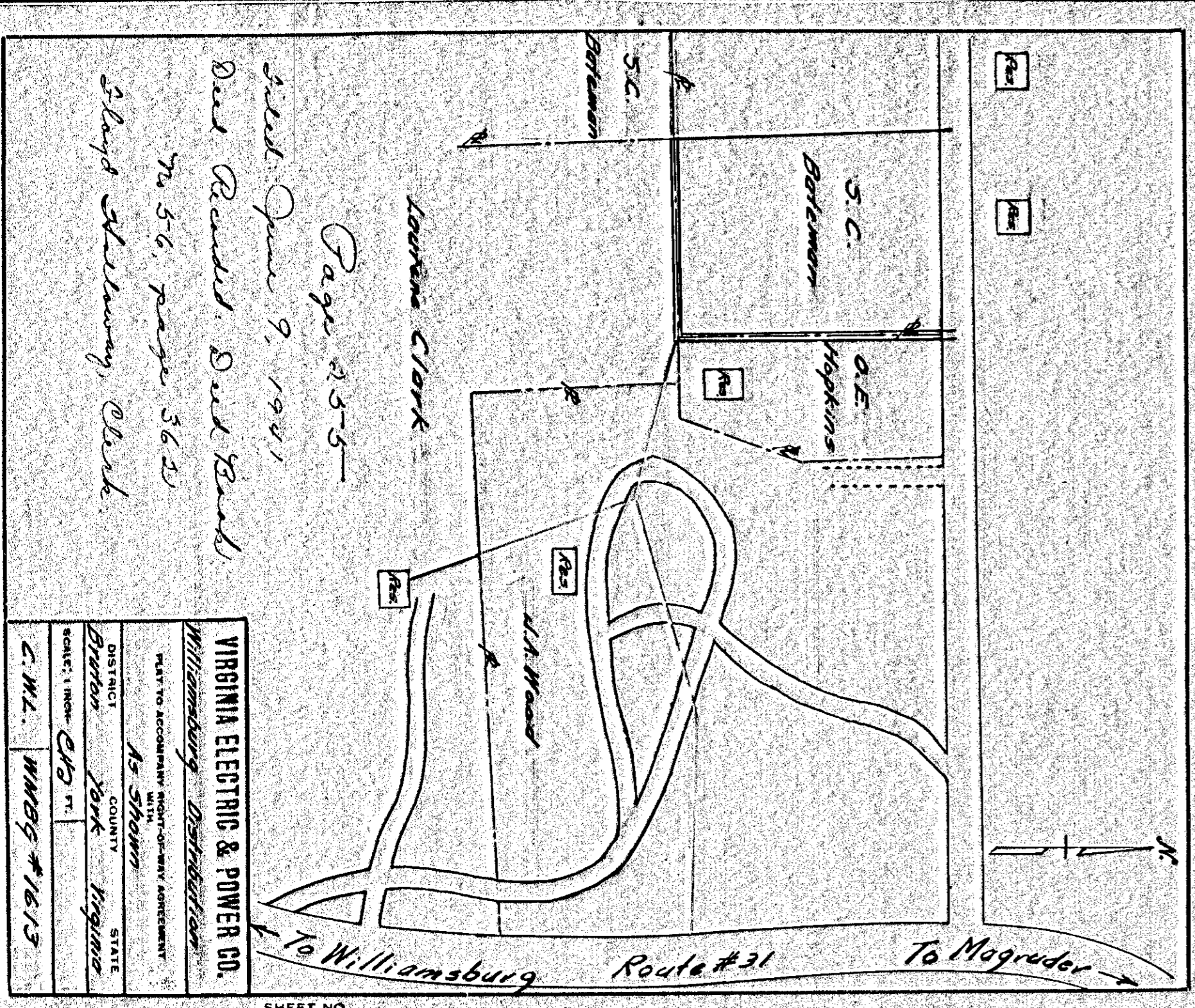


Page 553  
 Sold June 9, 1941  
 Deed Recorded Deed Book  
 No. 56, page 357  
 J. Lloyd Shelburny, Clerk

VIRGINIA ELECTRIC & POWER CO.			
Williamsburg Distribution			
PLAT TO ACCOMPANY RIGHT-OF-WAY AGREEMENT WITH			
DISTRICT	AS SHOWN	COUNTY	STATE
Barton	Jank	Hopkins	Virginia
SCALE: 1 INCH =	400 FT.		
C. W. L.	WMBG #1613		

553

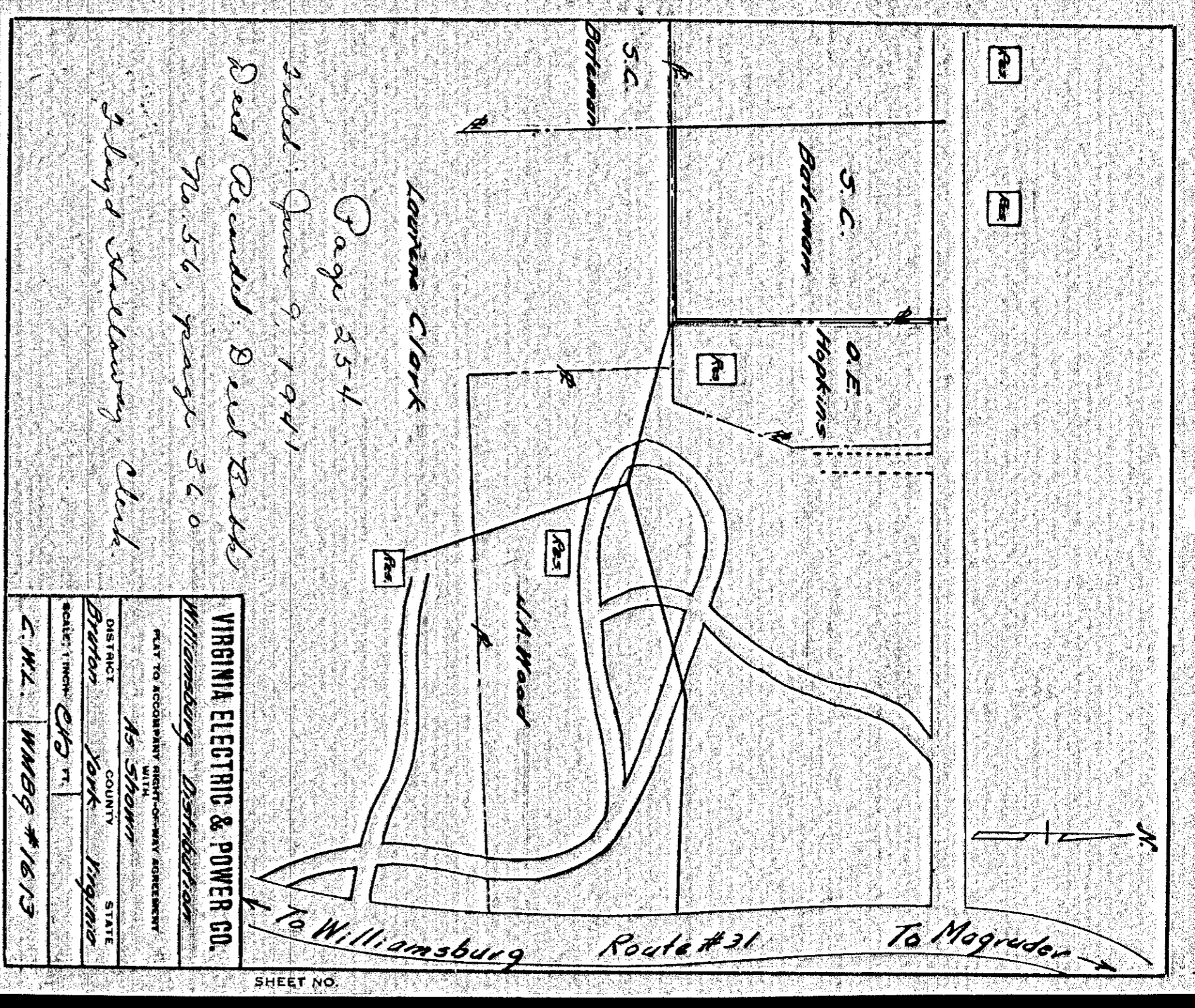
555



Page 555  
 Sold June 9, 1941  
 Deed Recorded Deed Book  
 No. 56, page 362  
 J. Lloyd Shelburny, Clerk

VIRGINIA ELECTRIC & POWER CO.			
Williamsburg Distribution			
PLAT TO ACCOMPANY RIGHT-OF-WAY AGREEMENT WITH			
DISTRICT	AS SHOWN	COUNTY	STATE
Barton	Jank	Hopkins	Virginia
SCALE: 1 INCH =	400 FT.		
C. W. L.	WMBG #1613		

554

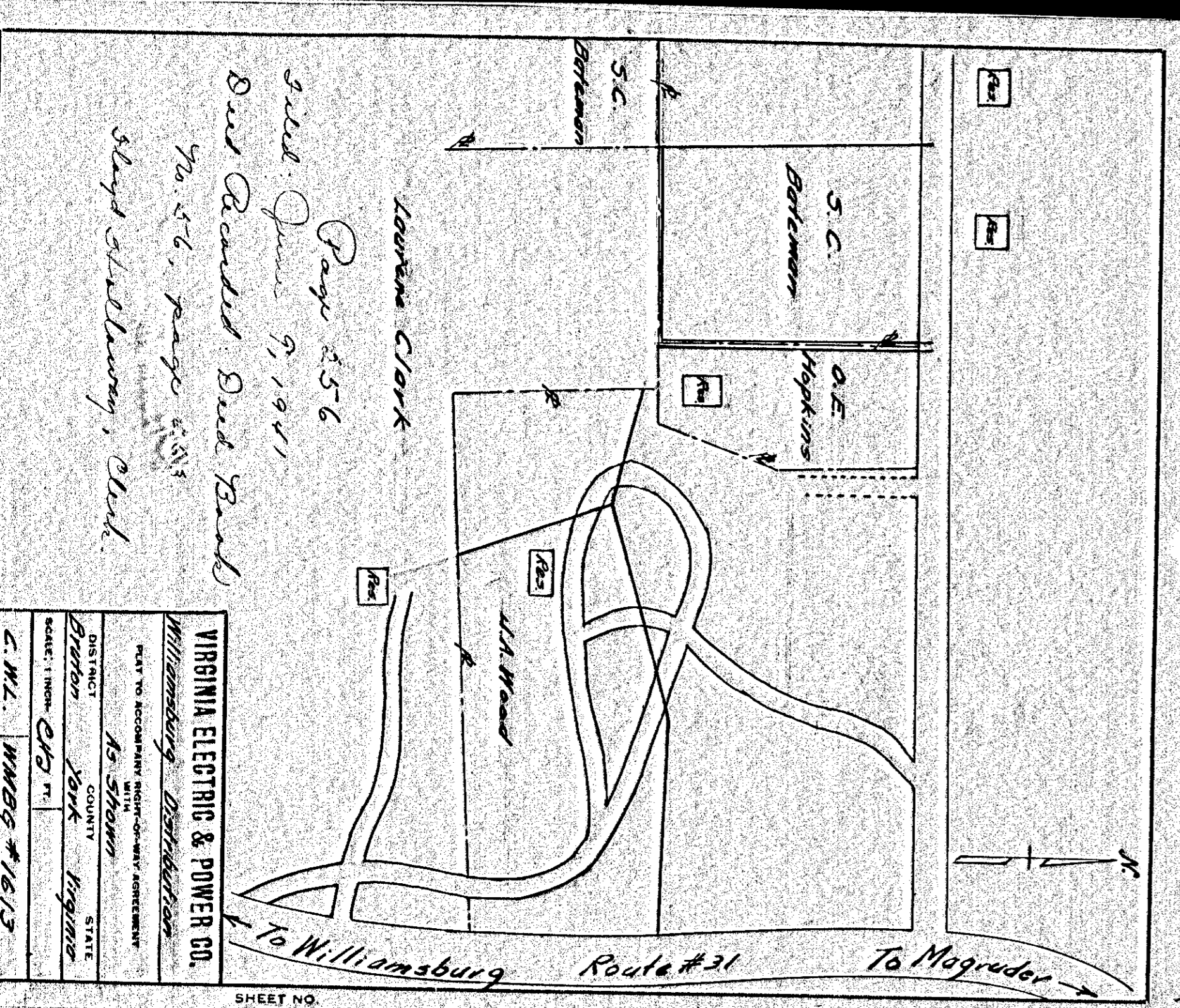


Page 554  
 Sold June 9, 1941  
 Deed Recorded Deed Book  
 No. 56, page 360  
 J. Lloyd Shelburny, Clerk

VIRGINIA ELECTRIC & POWER CO.			
Williamsburg Distribution			
PLAT TO ACCOMPANY RIGHT-OF-WAY AGREEMENT WITH			
DISTRICT	AS SHOWN	COUNTY	STATE
Barton	Jank	Hopkins	Virginia
SCALE: 1 INCH =	400 FT.		
C. W. L.	WMBG #1613		

556

Deed Book 16561 page 313



Page 556  
 Sold June 9, 1941  
 Deed Recorded Deed Book  
 No. 56, page 363  
 J. Lloyd Shelburny, Clerk

VIRGINIA ELECTRIC & POWER CO.			
Williamsburg Distribution			
PLAT TO ACCOMPANY RIGHT-OF-WAY AGREEMENT WITH			
DISTRICT	AS SHOWN	COUNTY	STATE
Barton	Jank	Hopkins	Virginia
SCALE: 1 INCH =	400 FT.		
C. W. L.	WMBG #1613		