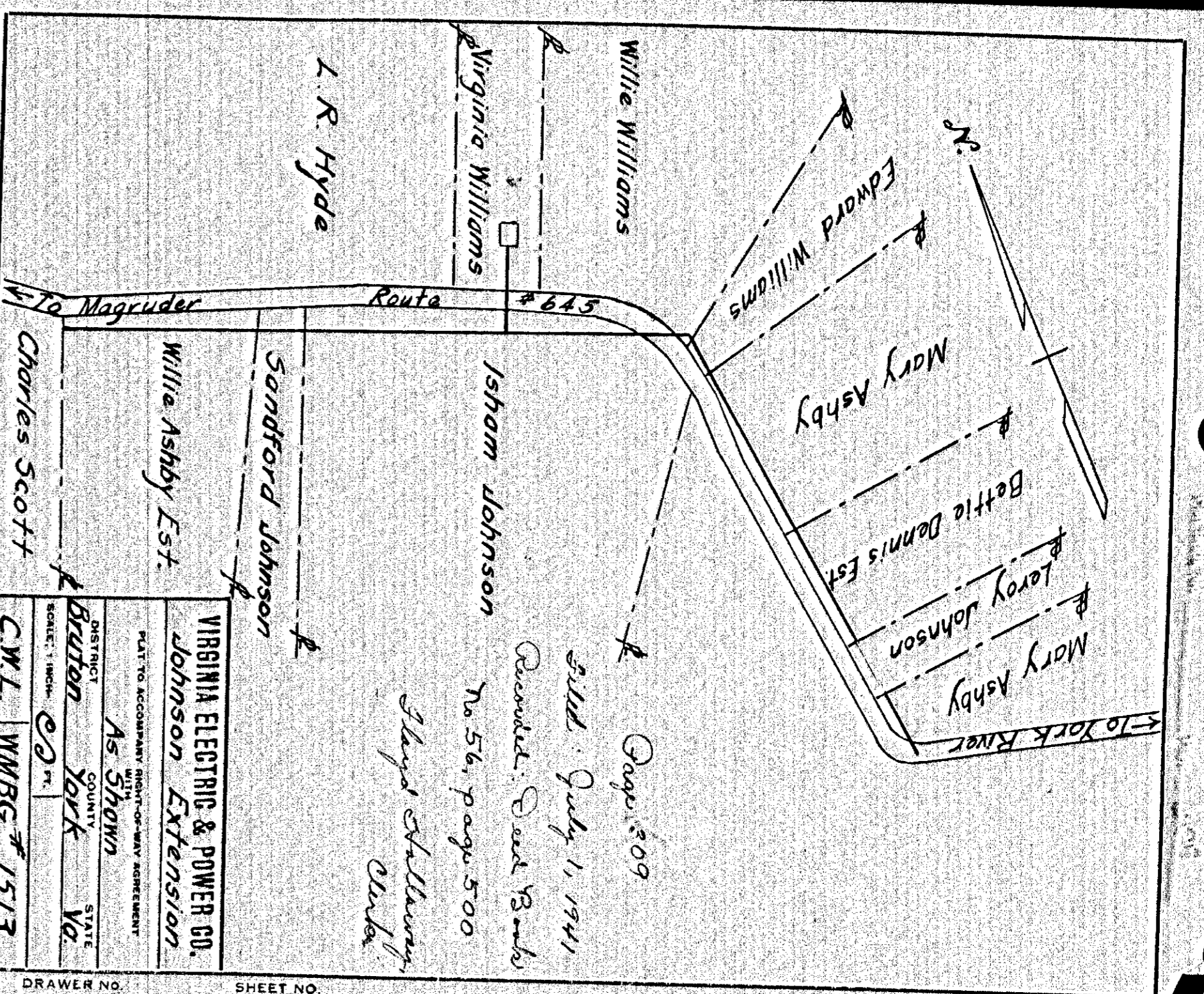


VIRGINIA ELECTRIC & POWER CO.
 Johnson Extension
 PLAT TO ACCOMPANY RIGHT-OF-WAY AGREEMENT
 AS SHOWN
 DISTRICT BUTTON YORK VA
 SCALE: 1 INCH = 20 FT.
 C.W.L. WMBG # 1509

DRAWER NO. SHEET NO.

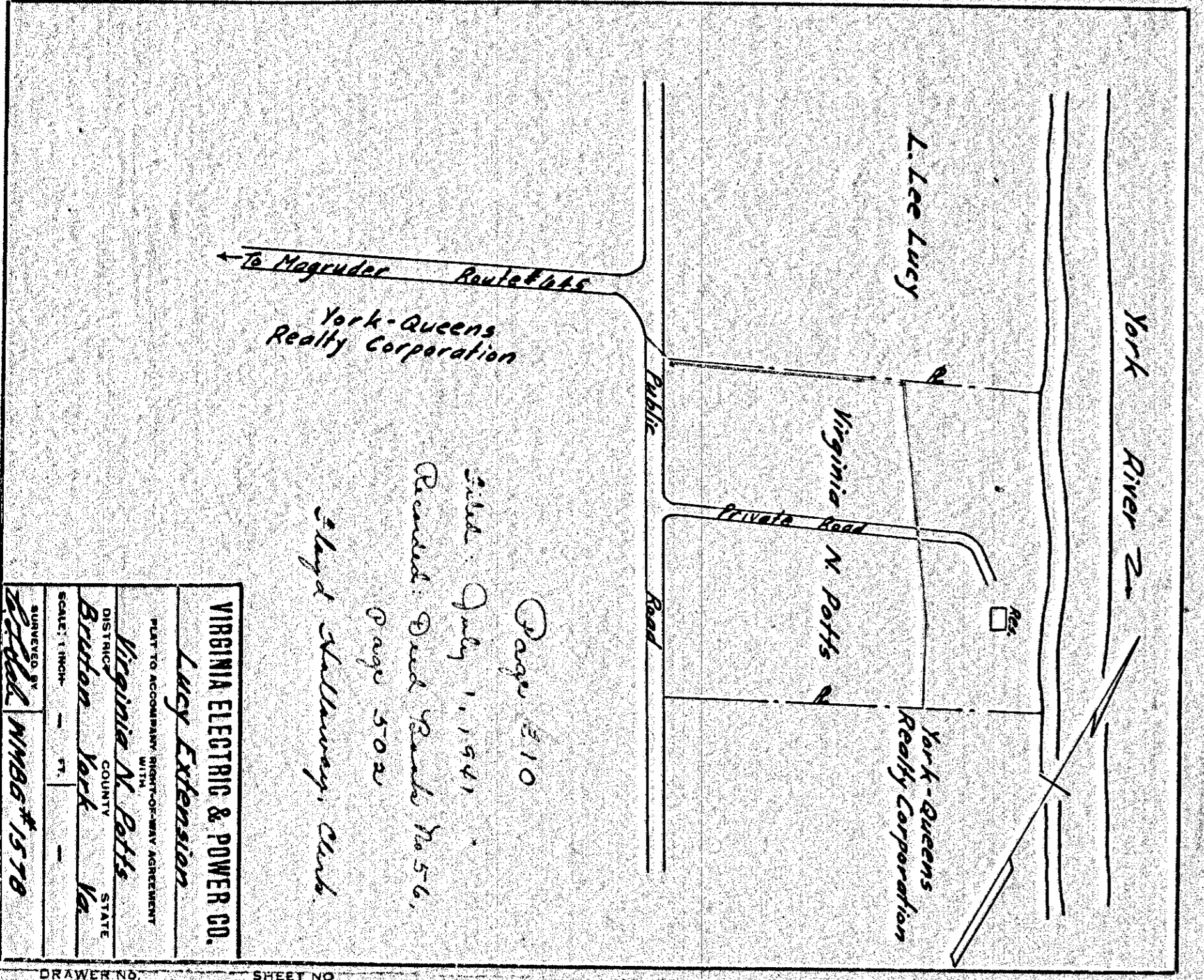
608



VIRGINIA ELECTRIC & POWER CO.
 Johnson Extension
 PLAT TO ACCOMPANY RIGHT-OF-WAY AGREEMENT
 AS SHOWN
 DISTRICT BUTTON YORK VA
 SCALE: 1 INCH = 20 FT.
 C.W.L. WMBG # 1513

DRAWER NO. SHEET NO.

609



VIRGINIA ELECTRIC & POWER CO.
 Lucy Extension
 PLAT TO ACCOMPANY RIGHT-OF-WAY AGREEMENT
 AS SHOWN
 DISTRICT BUTTON YORK VA
 SCALE: 1 INCH = 20 FT.
 C.W.L. WMBG # 1510

DRAWER NO. SHEET NO.

610

Page 510
 Filed July 1, 1941
 Recorded: Book 18, page 56,
 page 502
 Floyd Stillman, Clerk