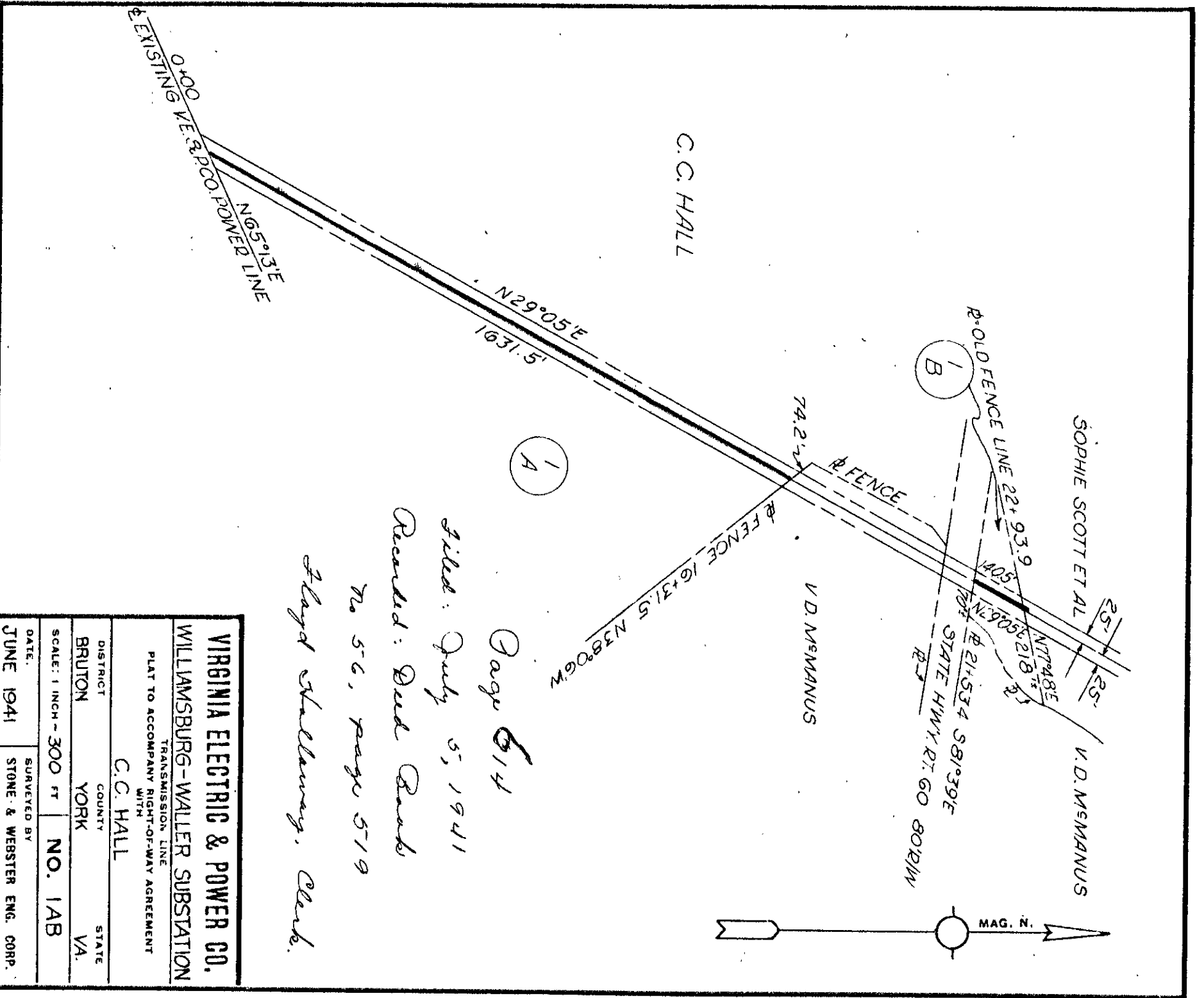


VIRGINIA ELECTRIC & POWER CO.
 Johnson Extension
 PLAT TO ACCOMPANY RIGHT-OF-WAY AGREEMENT WITH
 DISTRICT COUNTY STATE
 BRUTON YORK VA
 SCALE: 1" = 100' 20' 1/2"
 DRAWER NO. CML SHEET NO. WMBG # 1509

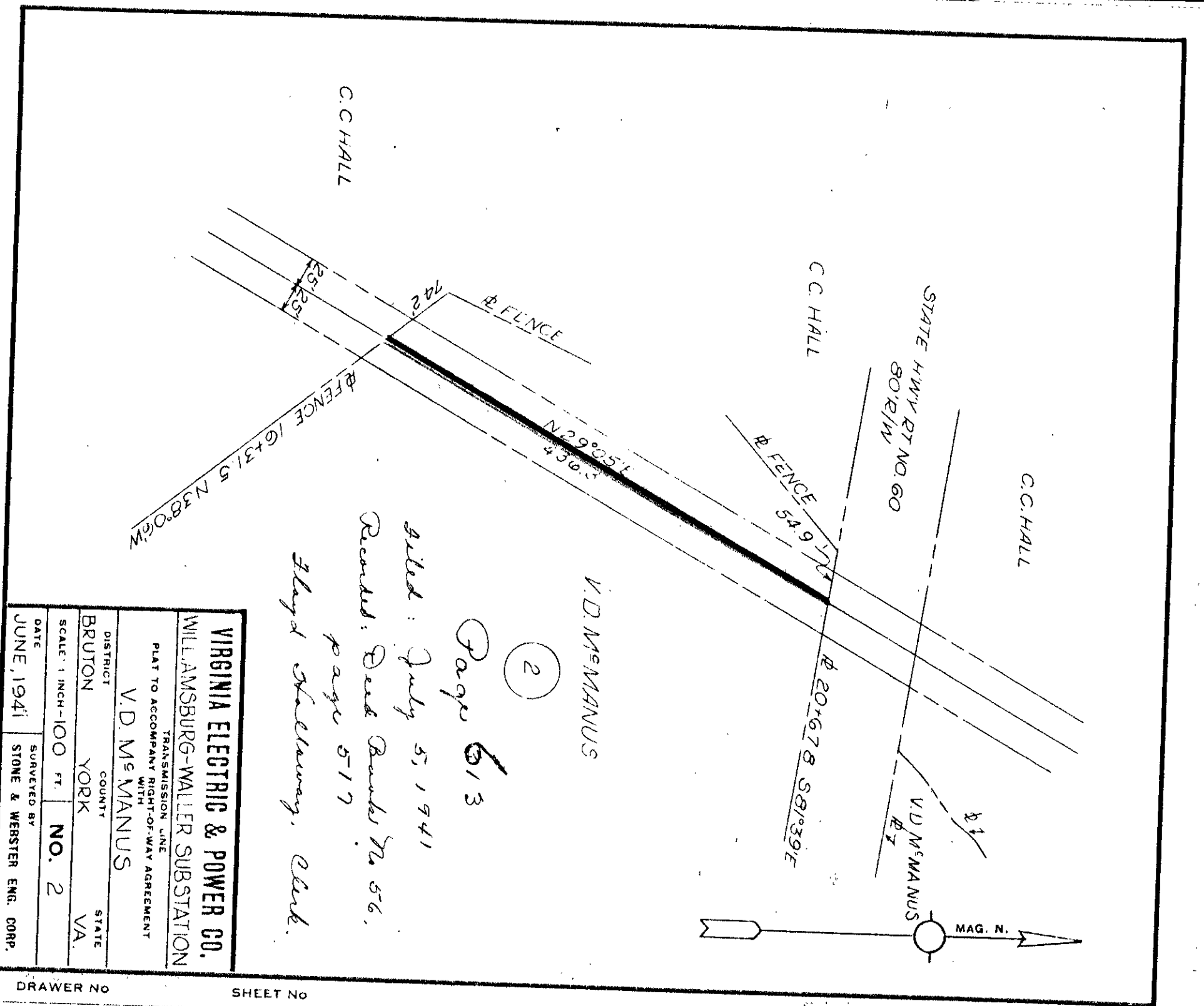
612

614



VIRGINIA ELECTRIC & POWER CO.
 WILLIAMSBURG-WALLER SUBSTATION
 TRANSMISSION LINE
 PLAT TO ACCOMPANY RIGHT-OF-WAY AGREEMENT WITH
 DISTRICT COUNTY STATE
 BRUTON YORK VA
 SCALE: 1" = 300' FT
 DATE: JUNE 1941
 SURVEYED BY: STONE & WEBSTER ENG. CORP.

Filed: July 5, 1941
 Reared: Bud Reed
 No. 56, page 519
 Floyd Stellingmy, Clerk.

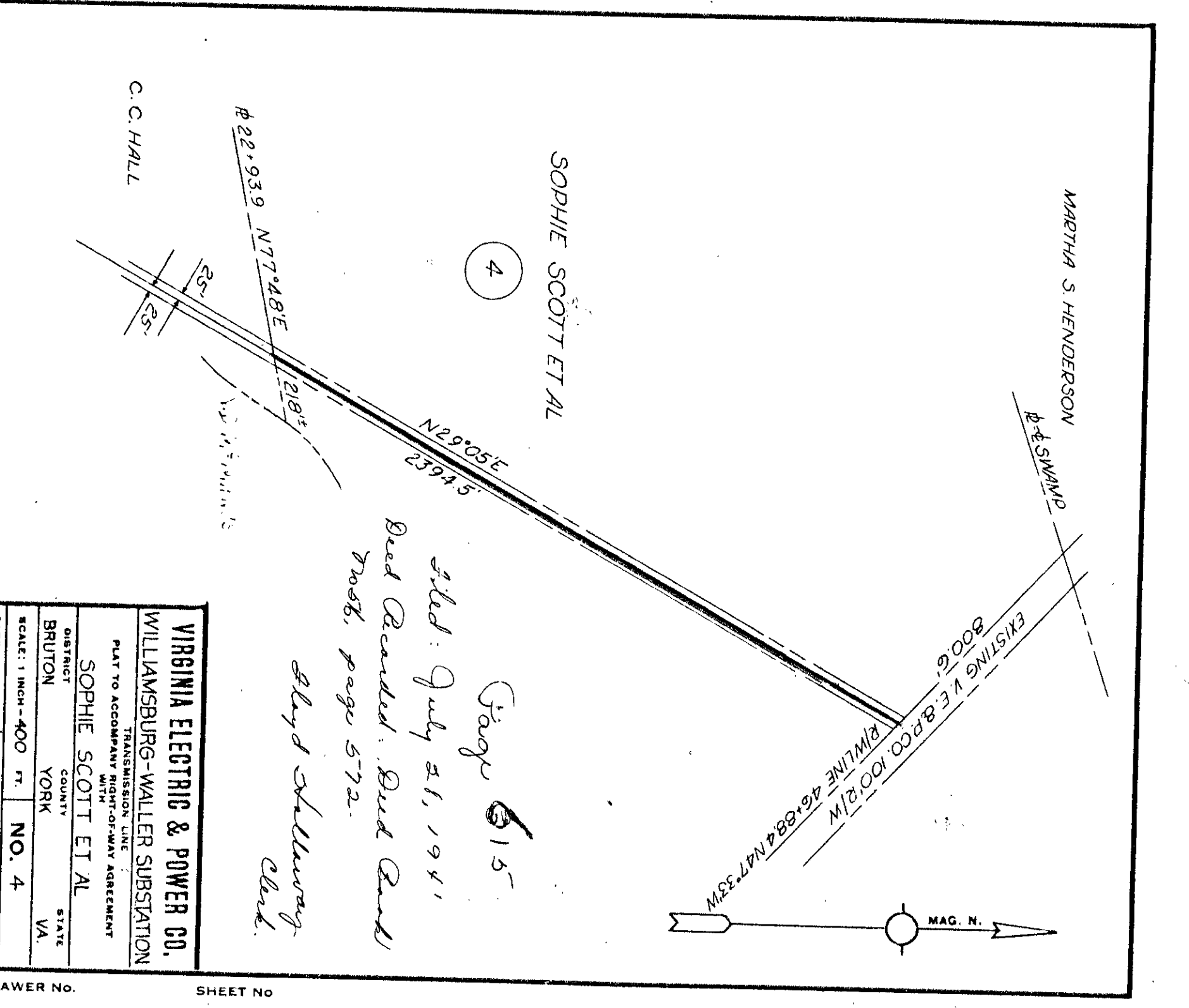


VIRGINIA ELECTRIC & POWER CO.
 WILLIAMSBURG-WALLER SUBSTATION
 TRANSMISSION LINE
 PLAT TO ACCOMPANY RIGHT-OF-WAY AGREEMENT WITH
 DISTRICT COUNTY STATE
 BRUTON YORK VA
 SCALE: 1" = 100' FT
 DATE: JUNE 1941
 SURVEYED BY: STONE & WEBSTER ENG. CORP.

Filed: July 5, 1941
 Reared: Bud Reed No. 56,
 page 517
 Floyd Stellingmy, Clerk.

613

615



VIRGINIA ELECTRIC & POWER CO.
 WILLIAMSBURG-WALLER SUBSTATION
 TRANSMISSION LINE
 PLAT TO ACCOMPANY RIGHT-OF-WAY AGREEMENT WITH
 DISTRICT COUNTY STATE
 BRUTON YORK VA
 SCALE: 1" = 400' FT
 DATE: JUNE 1941
 SURVEYED BY: STONE & WEBSTER ENG. CORP.

Filed: July 21, 1941
 Bud Reared: Bud Reed
 No. 572,
 page 572.
 Floyd Stellingmy, Clerk.