

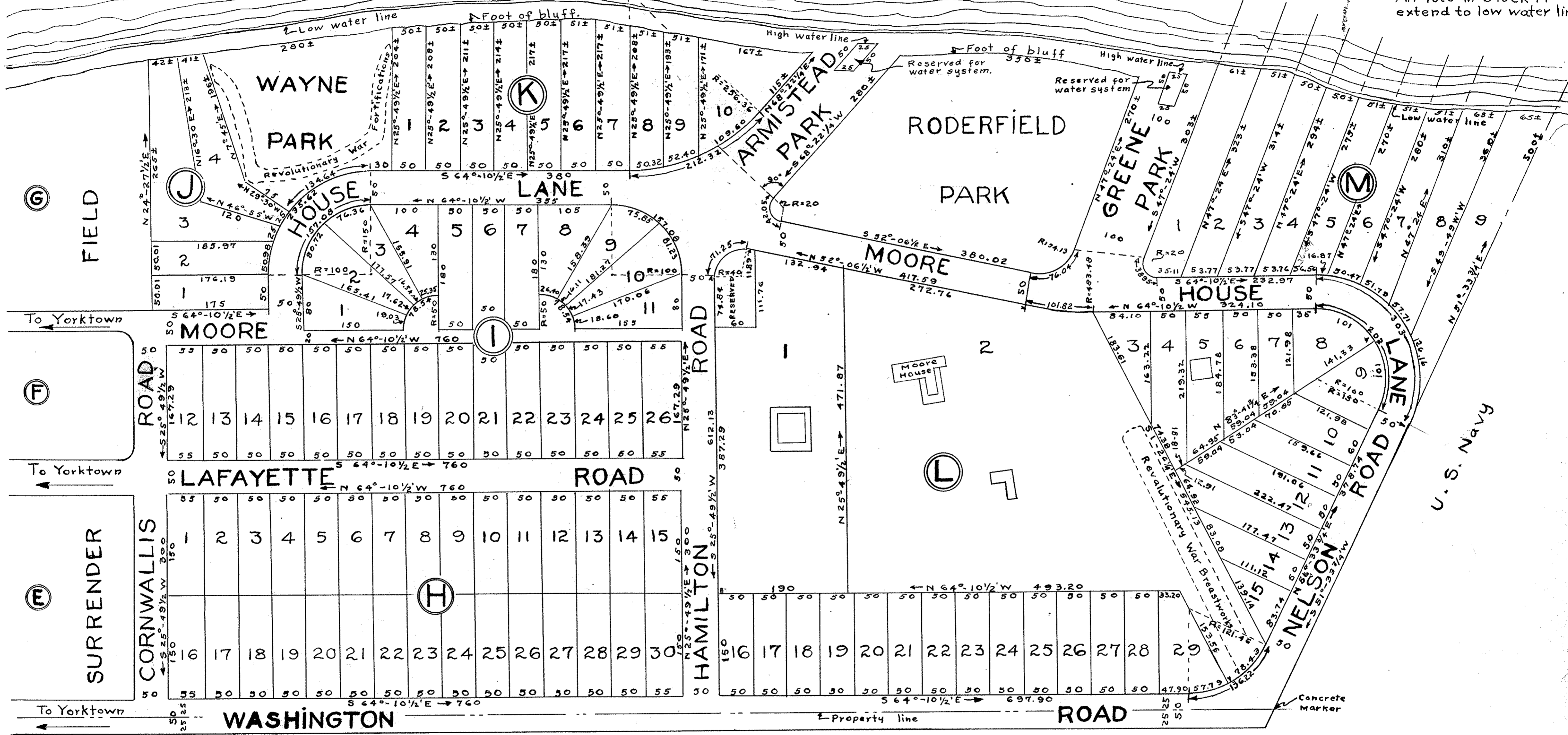
YORK

RIVER

Lots 3 & 4 in Block J extend to present foot of bluff.

All lots in Block K extend to present foot of bluff.

All lots in Block M extend to low water line



U. S. Navy

MAP OF SURRENDER FIELD SECTION B

BEING A PORTION OF "MOORE HOUSE TRACT" OF TEMPLE FARM ADJACENT TO YORKTOWN-YORK COUNTY VIRGINIA

Scale: 1"=100 April, 8, 1925

U. S. Navy

CHAPIN & CLARK
REALTORS-RICHMOND-VIRGINIA
SALES AGENTS

J. Temple Waddill
Certified Civil Engineer
Richmond-Va.