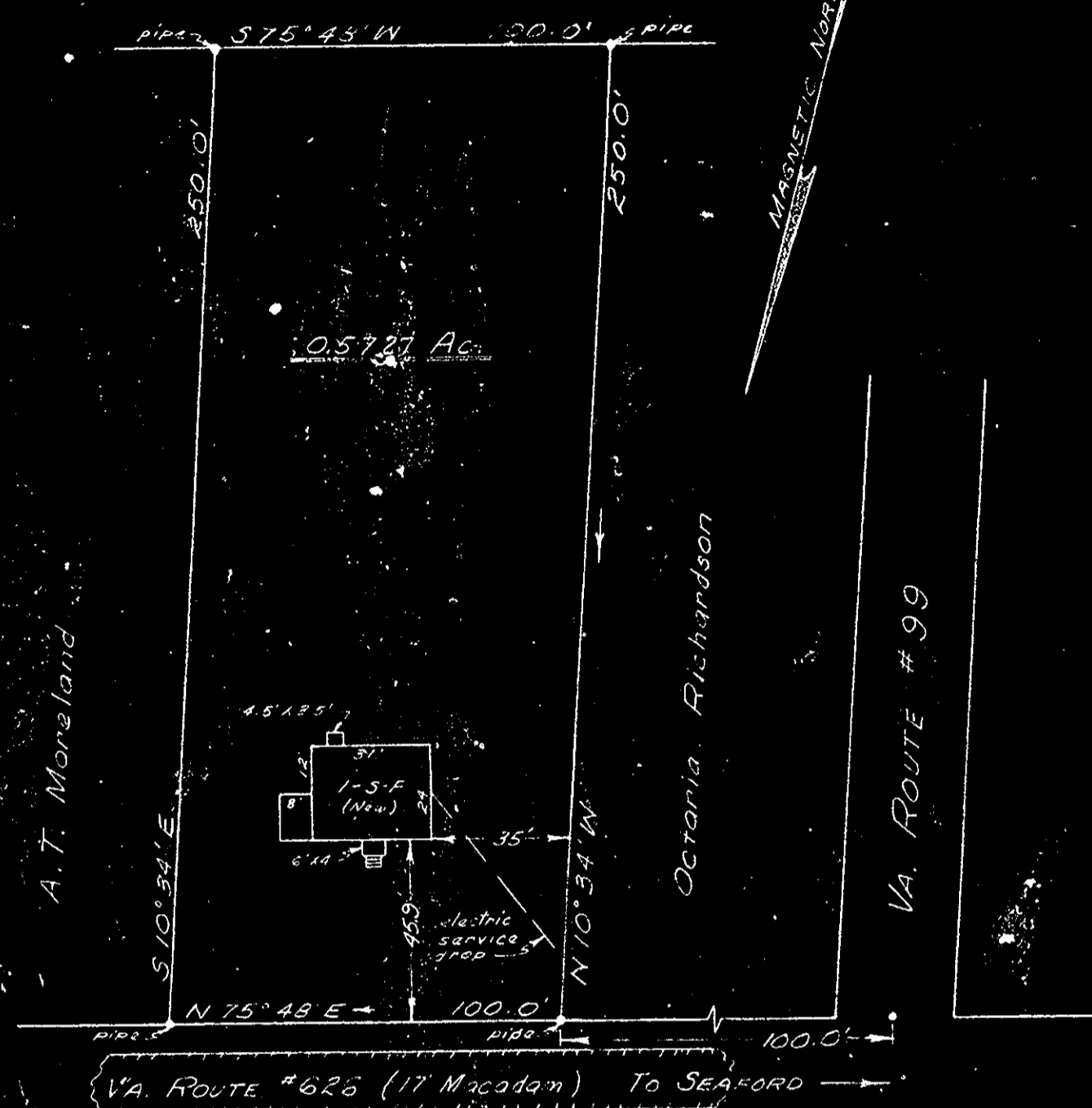


Need Bk 70 p 243

T. T. Ironmonger

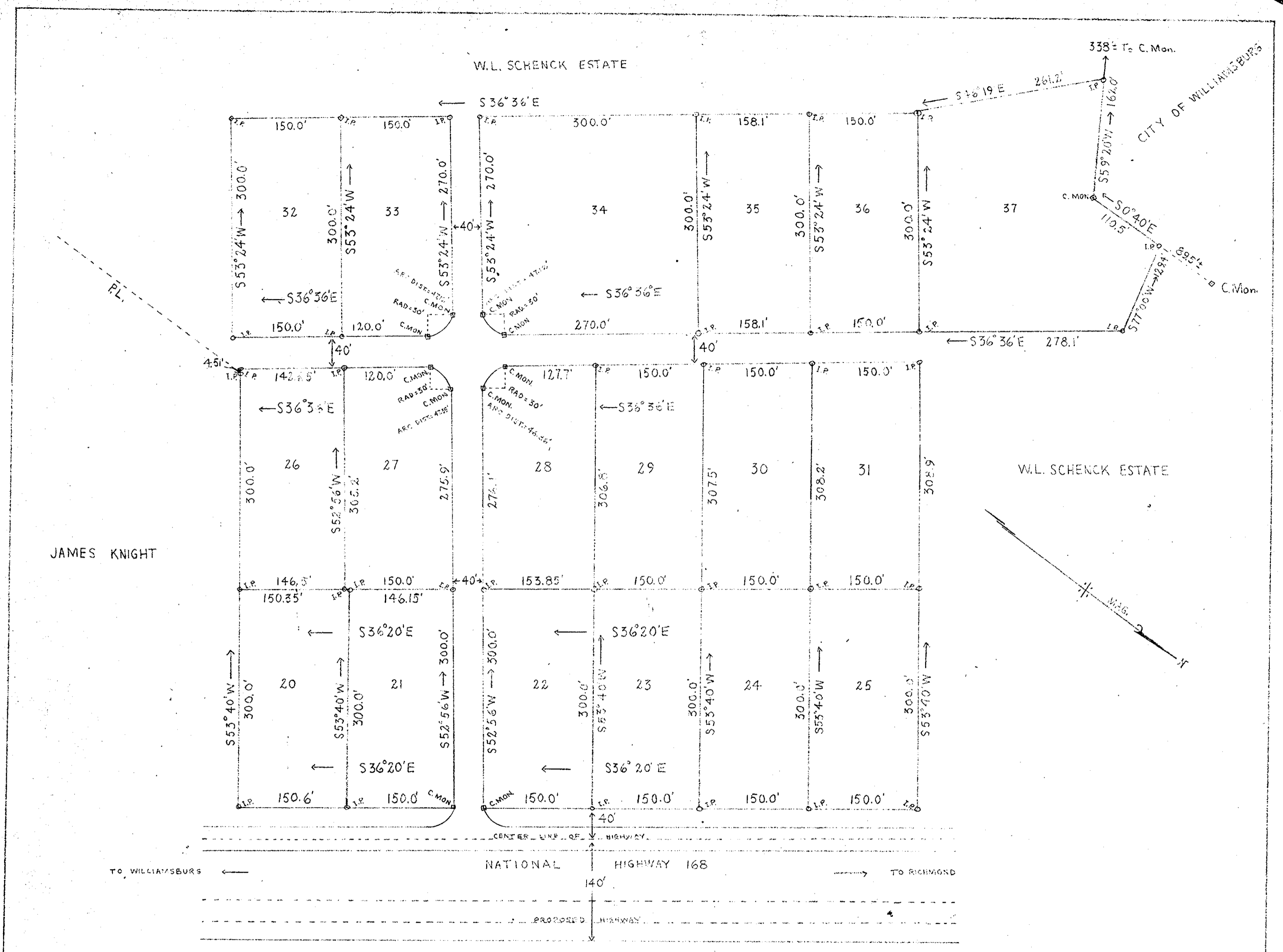


Plat Book No. 4 Page 179

Plat of the property of:  
Paul & Mary Fietz

GRAFTON DISTRICT  
YORK COUNTY  
VIRGINIA

R.F. Pyle, Certified Land Surveyor - Newport News, Va.  
Scale: 1 in. = 40 ft. August 3, 1950



PLAT SHOWING SUBDIVISION OF PART  
OF THE W.L. SCHENCK ESTATE SITUATED  
IN BRUTON DISTRICT, YORK COUNTY, VIRGINIA.  
AUGUST, 1950 SCALE 1"=100'

Virginia: In the Clerk's Office of the Circuit Court of York County, the 23rd day of August, 1950.

The foregoing plat of a part of the W. L. Schenck Estate was this day presented and admitted to record as the law requires.

Teste:  
*W. D. T.* Clerk.

VINCENT D. McMANUS  
SURVEYING & MAPPING  
WILLIAMSBURG, VIRGINIA

W. D. T.