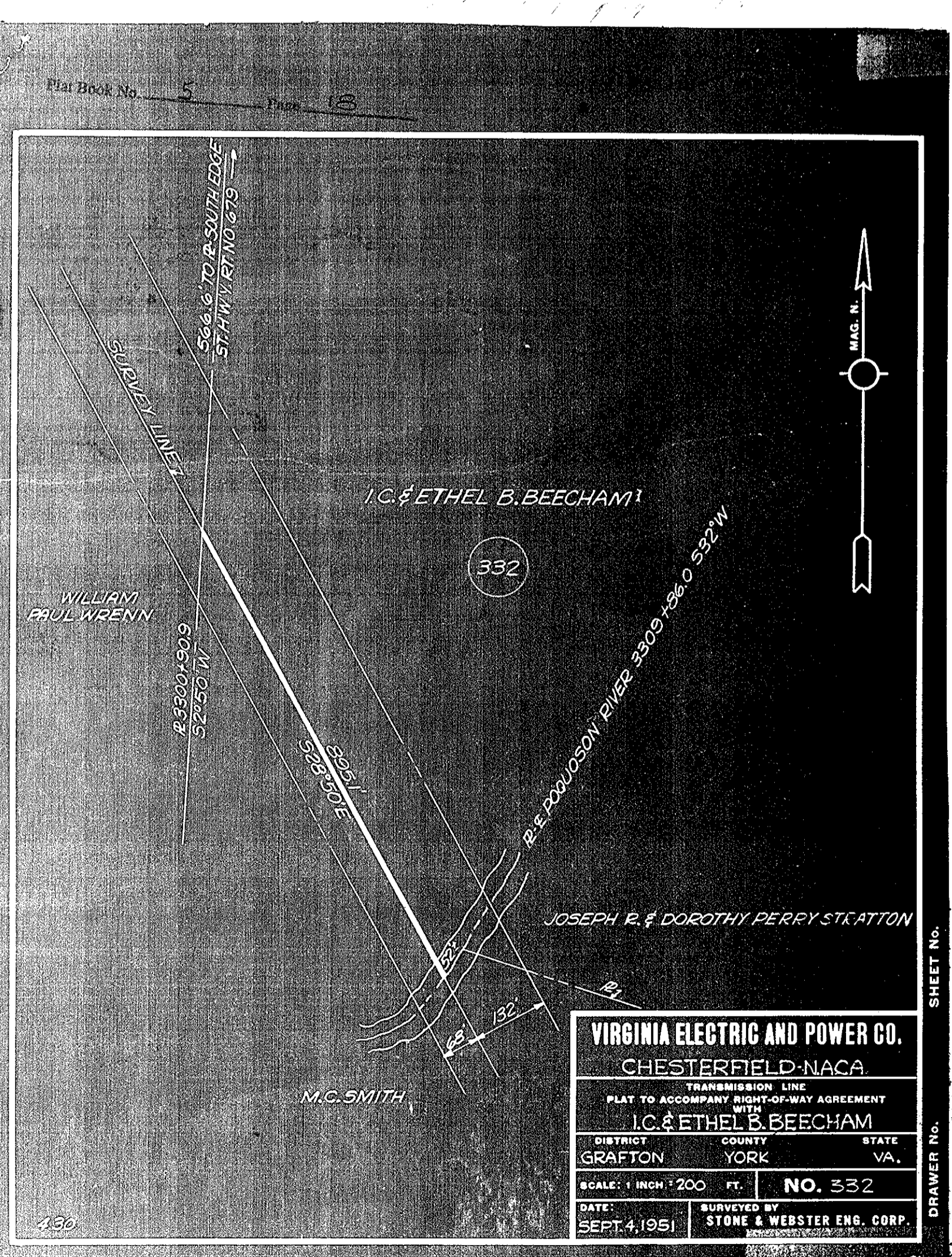
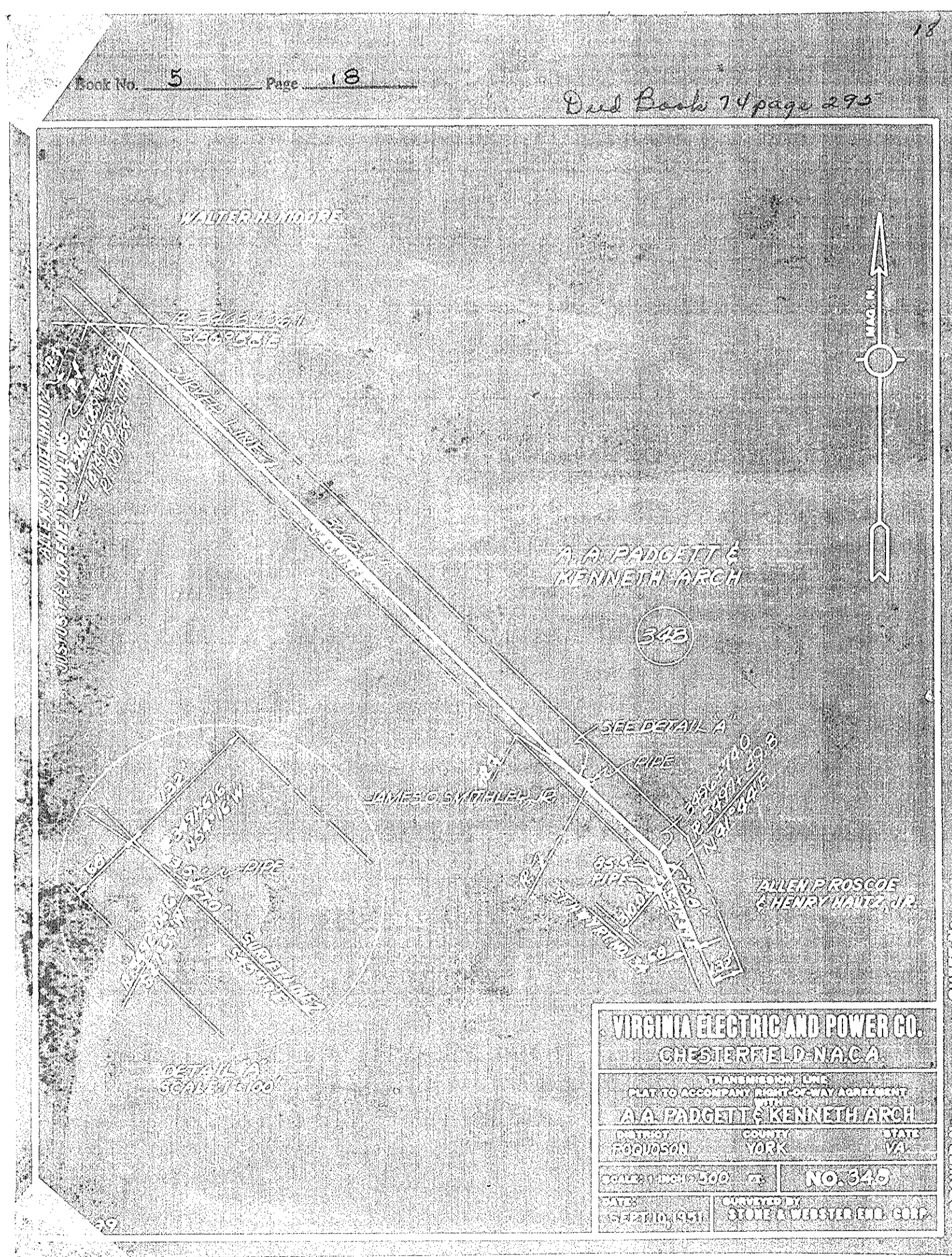


Revised plan of lots 6 and 7,  
Section 3, Plan of Marlbank  
Farm, York County, Virginia  
March 18, 1952 Scale 1" = 100'

J. Temple Waddill  
Certified Civil Engineer  
Richmond, Va.

FPB  
344



J. Temple Waddill  
Certified Civil Engineer  
Richmond, Va.