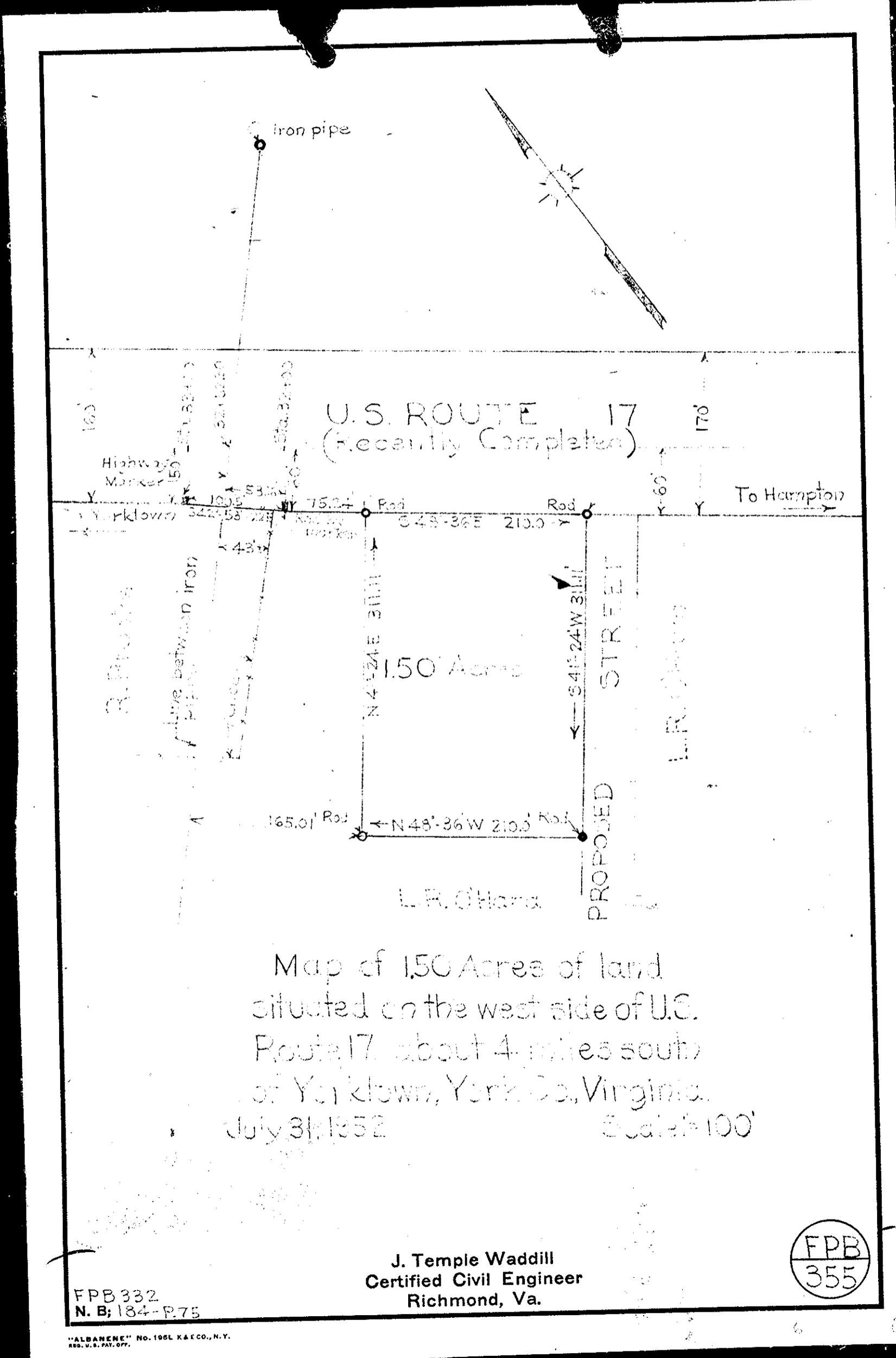


Plat Book No. 5 Page 86

PLAT SHOWING REAL PROPERTY BELONGING TO GEORGE SEDGWICK ET. ALS. YORK COUNTY, VIRGINIA.

DECL. OF NEEDLE, 6° 20' W. APPROX. SCALE DRAWN 1" = 200'-0" DATE DRAWN: 13 TH APRIL, 53. DRAWN BY: W. N. B.

*Presented to record on 4 day of May 1953 by J. Bryant*

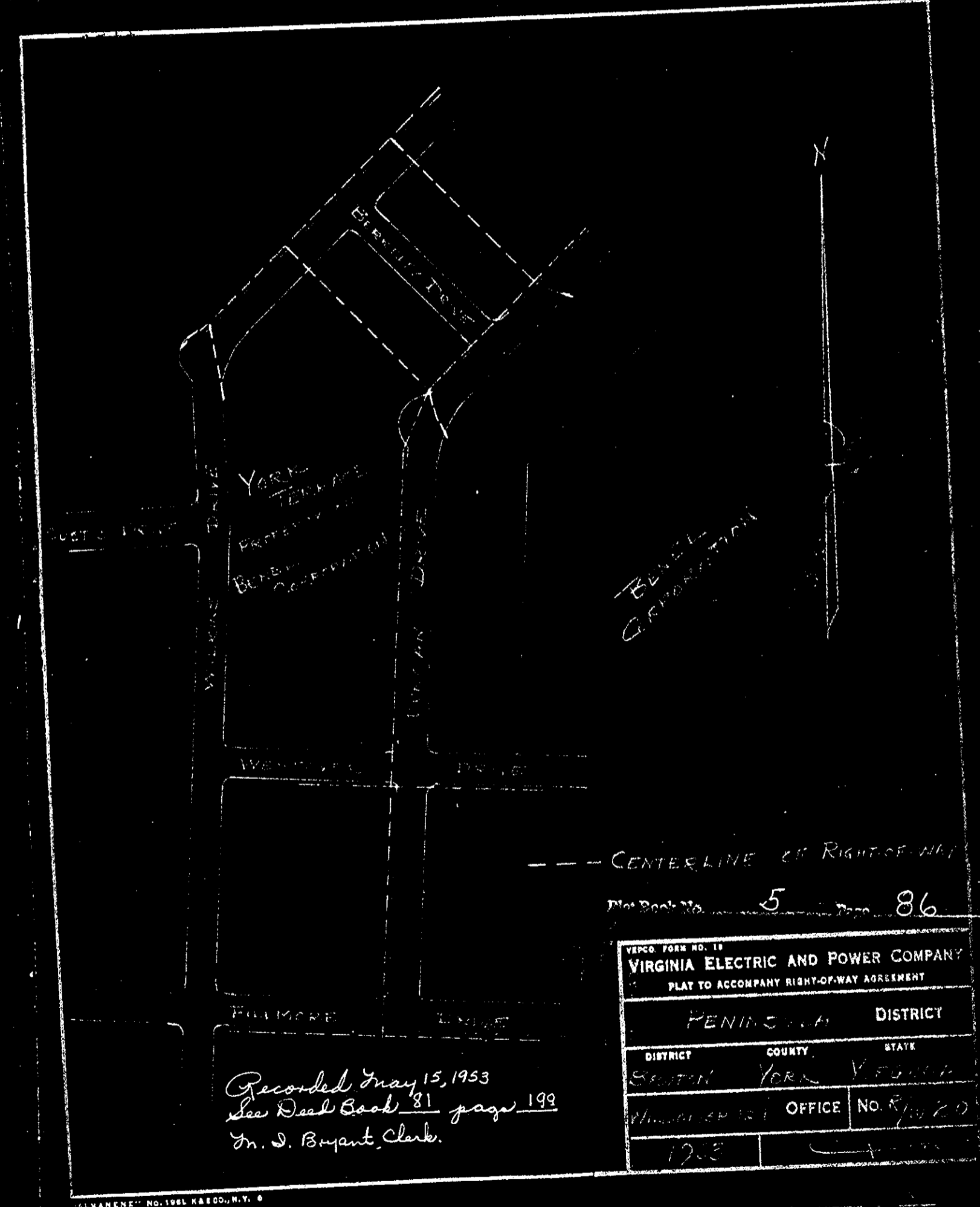


Map of 150 Acres of land situated on the west side of U.S. Route 17, about 4 miles south of Yorktown, York Co., Virginia. July 31, 1952 Scale 1" = 100'

J. Temple Waddill Certified Civil Engineer Richmond, Va.



FPB 332 N. B. 184-P. 75



Plat Book No. 5 Page 86

PENINSULA DISTRICT		
DISTRICT	COUNTY	STATE
SOUTH YORK	YORK	VA
OFFICE		No. 87120

Recorded May 15, 1953 See Deed Book 81 page 199 In. J. Bryant, Clerk.

RECORDED NO. 1981 REC'D. N.Y. 6