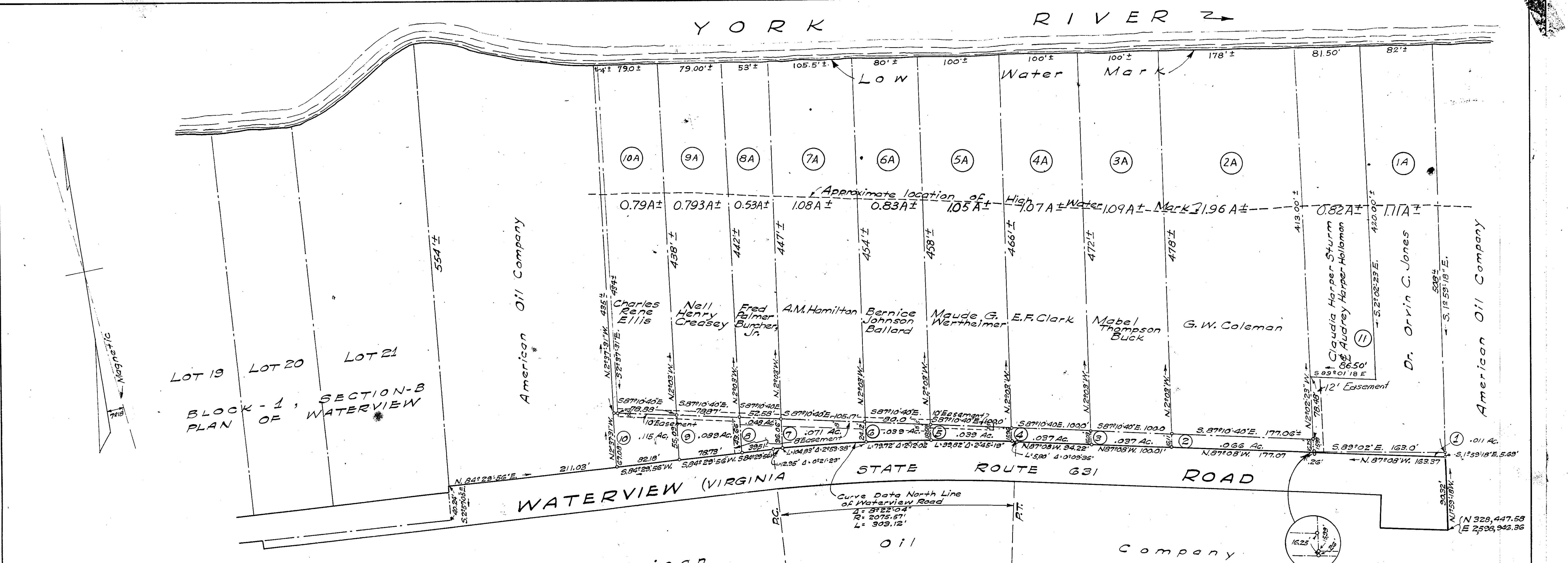


YORK

RIVER



LOT 19 LOT 20 LOT 21  
BLOCK - 1, SECTION - B  
PLAN OF WATERVIEW

WATERVIEW (VIRGINIA) ROAD

Curve Data North Line of Waterview Road  
 $R = 2075.57'$   
 $L = 303.12'$

American Oil Company

Oil Company

NOTE:  
 Bearing refer to the State Coordinate System.

Filed in the Clerk's Office this 23 day of Sept 1956  
 Teste  
 Melish J. Bryant  
 Clerk

MAP OF SEVERAL PARCELS OF LAND SITUATED ON THE NORTH SIDE OF WATERVIEW ROAD, YORK COUNTY, GRAFTON DISTRICT, BEING A PORTION OF LAND FORMERLY OWNED BY THE AMERICAN OIL COMPANY AND VARIOUS OTHER OWNERS.

August 16, 1956.  
 Revised August 30, 1956.

J. K. TIMMONS  
 CIVIL ENGINEER  
 RICHMOND, VA.

Scale: 1"=60'

JOB No. X-102