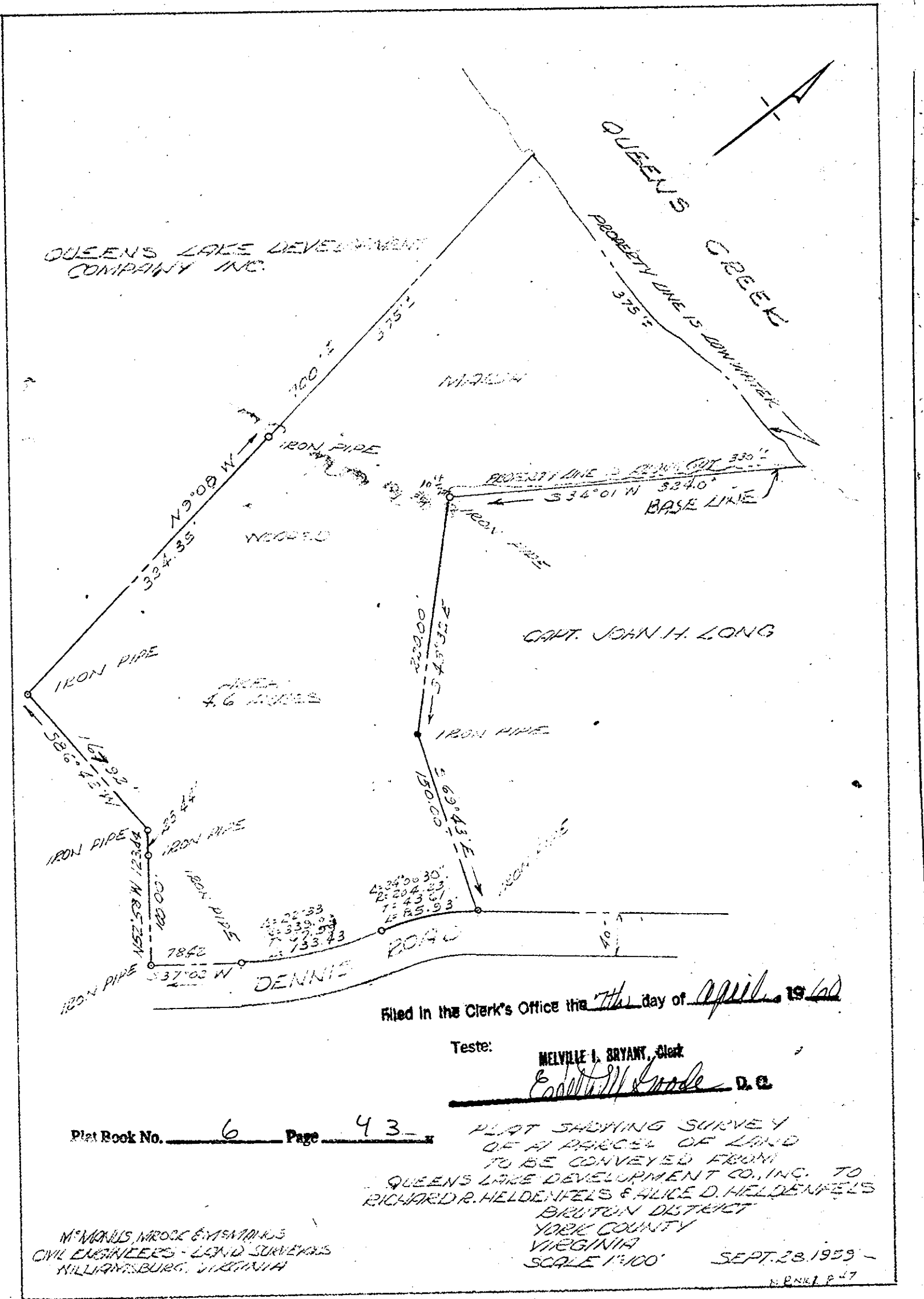


J. K. TIMMONS
 CIVIL ENGINEER & SURVEYOR
 RICHMOND, VA.
 DATE: 12-24-58 SCALE: 1" = 100'
 DRAWN BY: AMC
 CHECKED BY: J.T.W.
 JOB No. X-102

TRAV. SHEET 586-0-0-0

Plat Book No. 6 Page 43



Filed in the Clerk's Office the 7th day of April, 1960

Teste: Melville I. Bryant, Clerk
Richard R. Heldenfels D.E.

Plat Book No. 6 Page 43

PLAT SHOWING SURVEY
 OF A PARCEL OF LAND
 TO BE CONVEYED FROM
 QUEEN'S LAKE DEVELOPMENT CO., INC. TO
 RICHARD R. HELDENFELS & ALICE D. HELDENFELS
 BRUTON DISTRICT
 YORK COUNTY
 VIRGINIA
 SCALE 1"=100' SEPT. 28, 1959

M. WARD & ASSOCIATES
 CIVIL ENGINEERS - LAND SURVEYORS
 WILLIAMSBURG, VIRGINIA