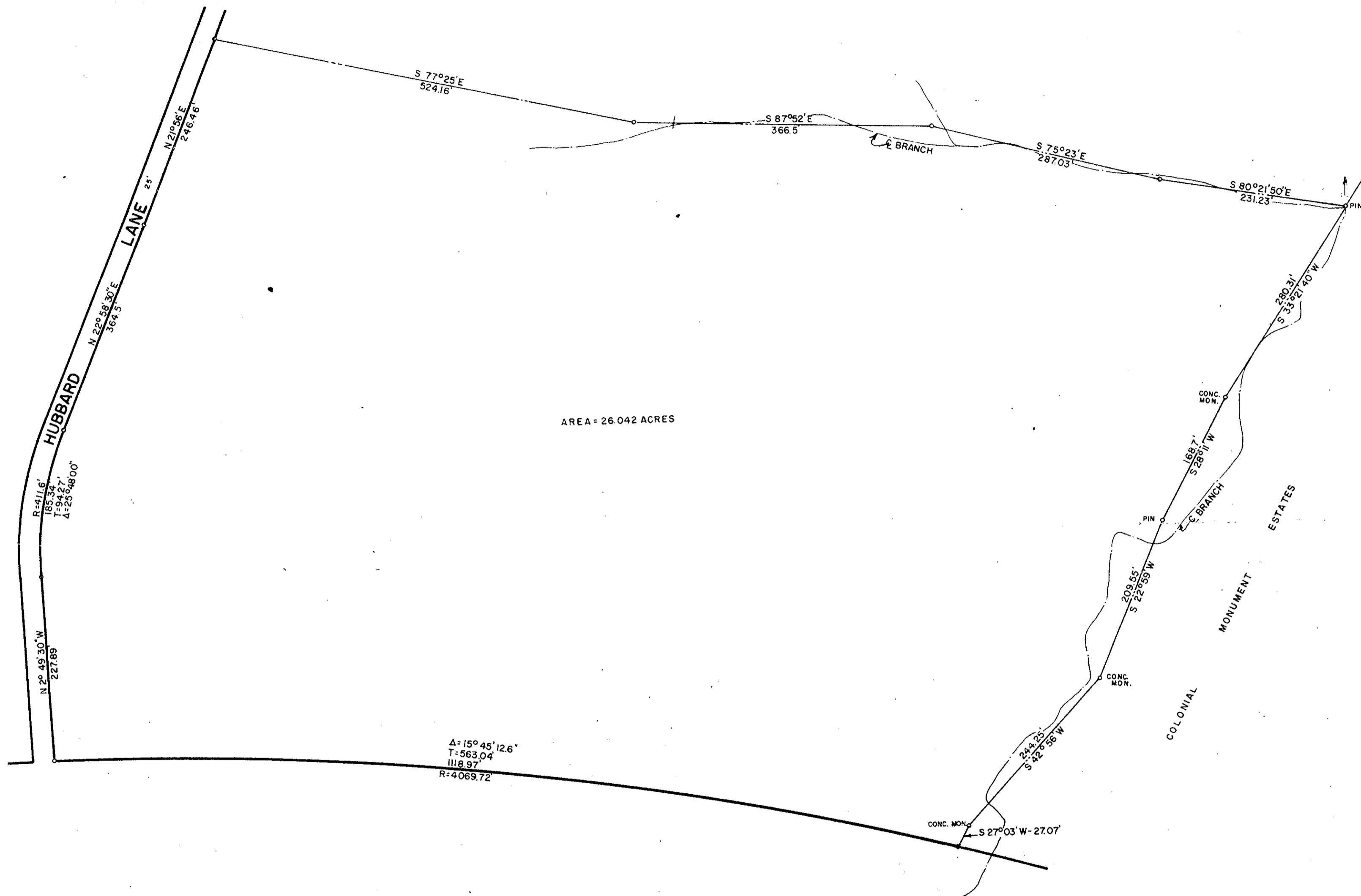


THE CHESAPEAKE CORPORATION

AREA - 26.042 ACRES



$\Delta = 159^{\circ} 45' 12.6''$
 $T = 563.04$
 $III 8.97$
 $R = 4069.72$

Filed in the Clerk's Office this 9 day of June, 1960

Tester:
 MELVILLE I. BRYANT, Clerk,
Edith P. Bryant D.C.

TO WILLIAMSBURG
 COLONIAL NATIONAL MONUMENT PARKWAY 500'
 TO YORKTOWN

PLAT
 OF PROPERTY OF
PERCY SMITH
 BRUTON MAGISTERIAL DISTRICT
 YORK COUNTY, VIRGINIA

SCALE: 1" = 100' OCTOBER 22, 1959

JOHN M. BALDWIN & ASSOCIATES
 CIVIL ENGINEERS & SURVEYORS
 NORFOLK, VIRGINIA

194-T-2180