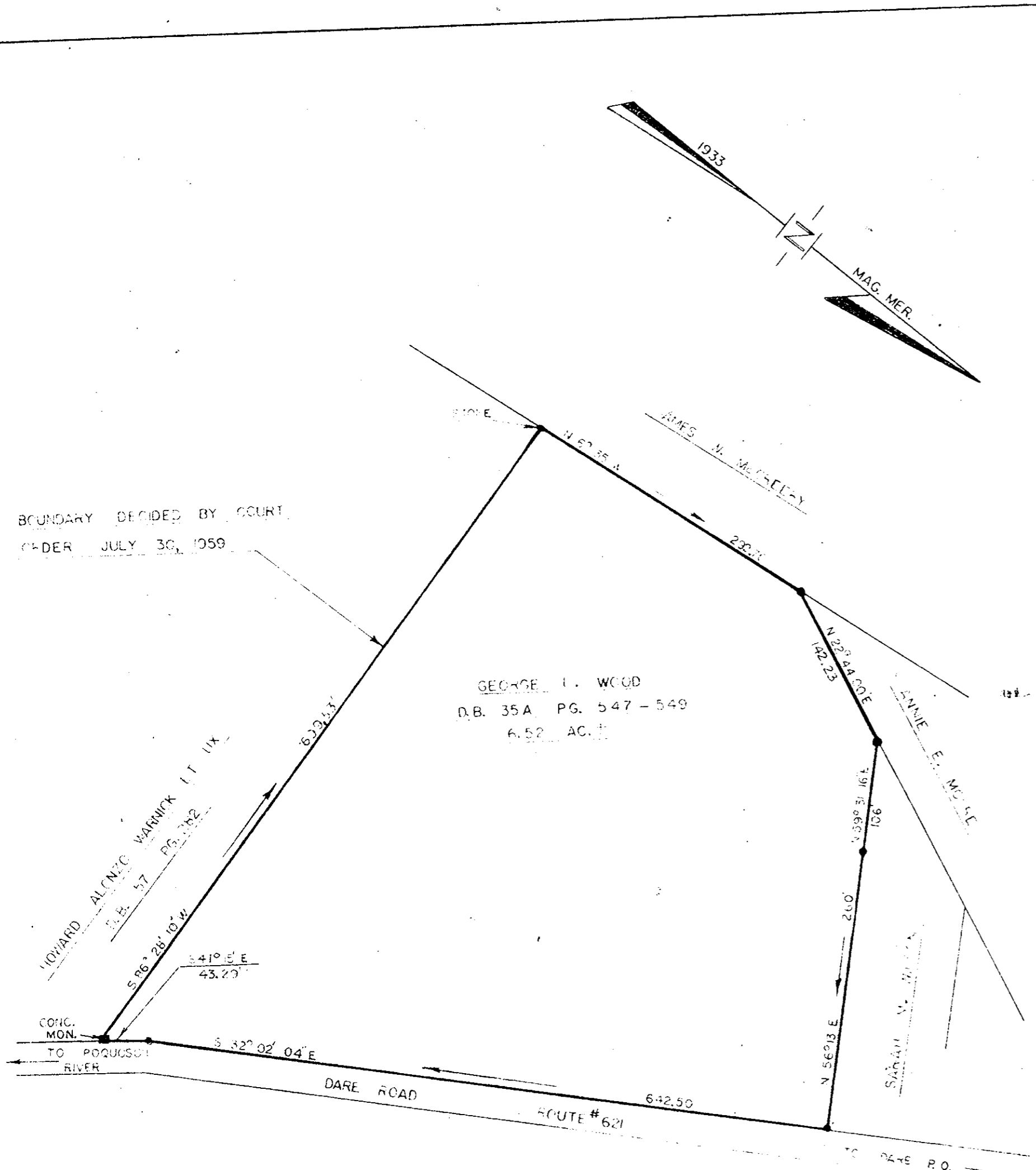


BOUNDARY DECIDED BY COURT
ORDER JULY 30, 1959



GEORGE L. WOOD
D.B. 35A PG. 547-549
6.52 AC.

Plat Book No. 6 Page 123

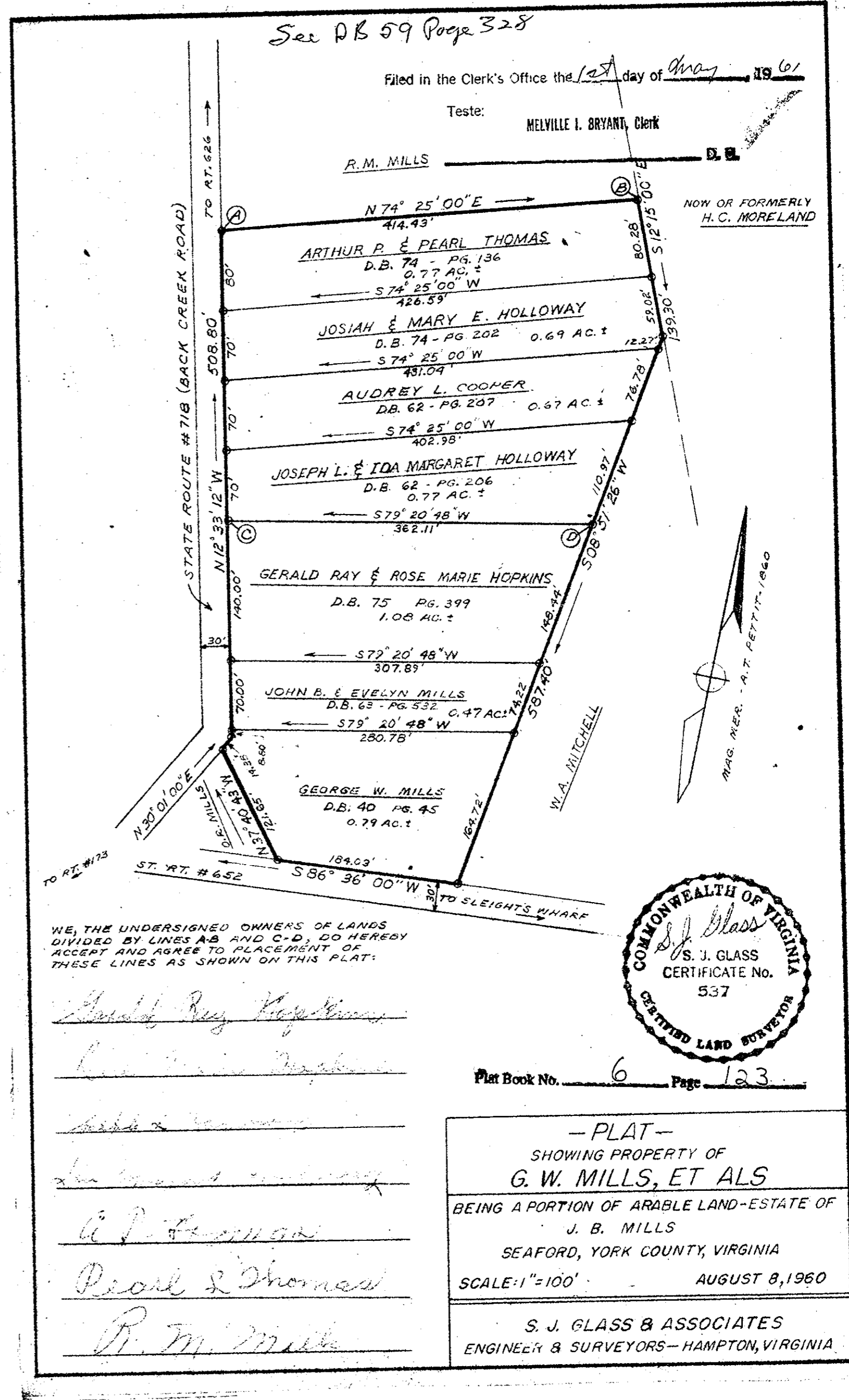
— PLAT OF PROPERTY —
GEORGE L. WOOD
LOCATED IN GRAFTON DISTRICT ON
ROUTE 621
YORK COUNTY, VIRGINIA
SCALE 1"=100' AUGUST 5, 1959
S. J. GLASS & ASSOCIATES
ENGINEERS & SURVEYORS VA. PENINSULA



Filed in the Clerk's Office the 24th day of March, 1961

Teste: Melville I. Bryant, Clerk
Edwin L. Bryant D.C.

INDICATES IRON PIPE



See PB 59 Page 328

Filed in the Clerk's Office the 1st day of May, 1961

Teste: Melville I. Bryant, Clerk

R.M. Mills D.C.

NOW OR FORMERLY
H.C. MORELAND

WE, THE UNDERSIGNED OWNERS OF LANDS
DIVIDED BY LINES A-B AND C-D, DO HEREBY
ACCEPT AND AGREE TO PLACEMENT OF
THESE LINES AS SHOWN ON THIS PLAT:

Gerald Ray Hopkins
Rose Marie Hopkins
John B. Mills
Evelyn Mills
Pearl & Thomas
R.M. Mills



Plat Book No. 6 Page 123

— PLAT —
SHOWING PROPERTY OF
G. W. MILLS, ET ALS
BEING A PORTION OF ARABLE LAND-ESTATE OF
J. B. MILLS
SEAFORD, YORK COUNTY, VIRGINIA
SCALE: 1"=100' AUGUST 8, 1960
S. J. GLASS & ASSOCIATES
ENGINEER & SURVEYORS—HAMPTON, VIRGINIA