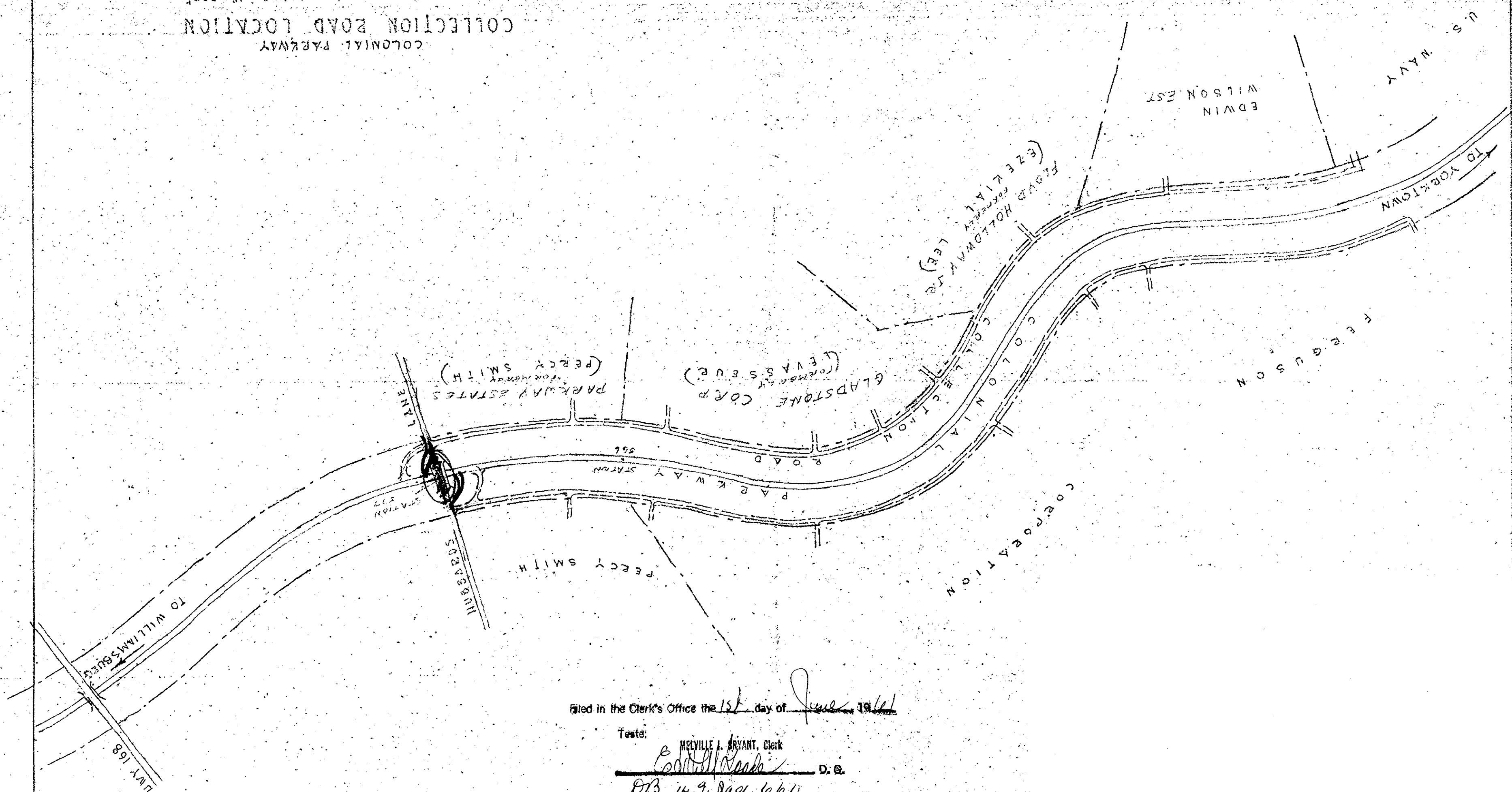


PKY-COL-2101-A

SCALE 1" = 500'

COLONIAL PARKWAY
COLLECTION ROAD LOCATION

Handwritten note: 1/2 mi. - 1/4 mi.



Filed in the Clerk's Office the 1st day of June 1961

Teste: MELVILLE A. BRYANT, Clerk
[Signature] D. C.

Handwritten: DB 149, page 660

LMY 168