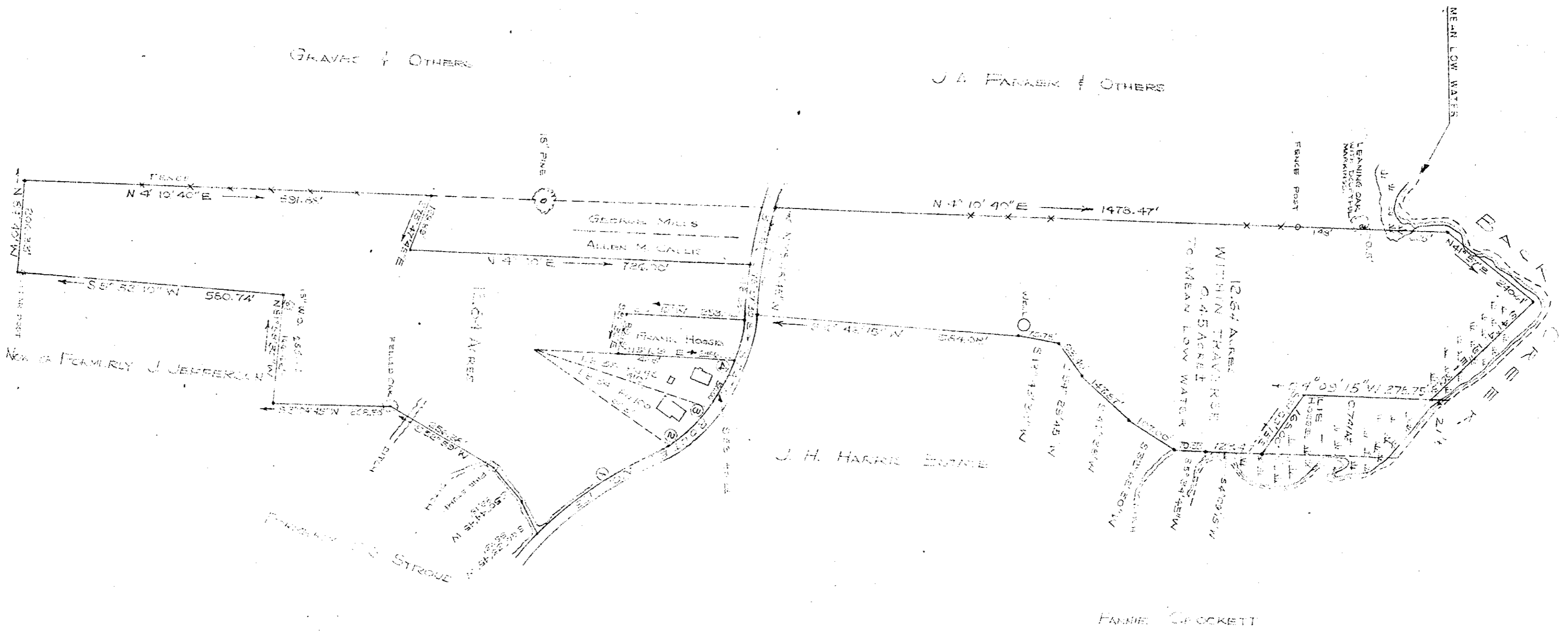


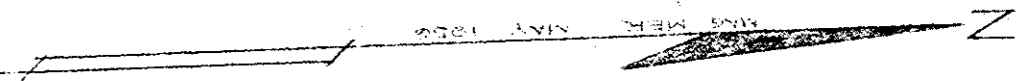
MON OF EIGHTHLY BAY COUNTY



CURVE DATA

NO.	DELTA	CHORD	ARC	CHORD	ARC
1	169° 51' 30"	345.08	57° 31'	520.64 37.8	520.64 37.8
2	139° 22' 54"	214.68	50° 07'	520.64 37.8	520.64 37.8
3	20° 00' 10"	20.43	87° 58'	520.64 37.8	520.64 37.8
4	187° 04' 28"	209.65	91° 12'	520.64 37.8	520.64 37.8

INDICATED HEAD RISE DATA



Filed in the Clerk's Office the 24th day of May, 1924.

Teste:  
 HENRIETTA BRYANT, Clerk  
*[Signature]*  
 D. C.

Plan Book No. 7 Page 18

PROPERTY OF  
 J. W. HORNSBY ESTATE  
 S. GEORGIA W. HORNSBY  
 SEAFORD, VIRGINIA

MURRAY B. DISCHINGER  
 ENGINEERS

NEWPORT NEWS, VIRGINIA

SCALE 1" = 200' AUGUST 1, 1926  
 REV. 5/27/16, 1927