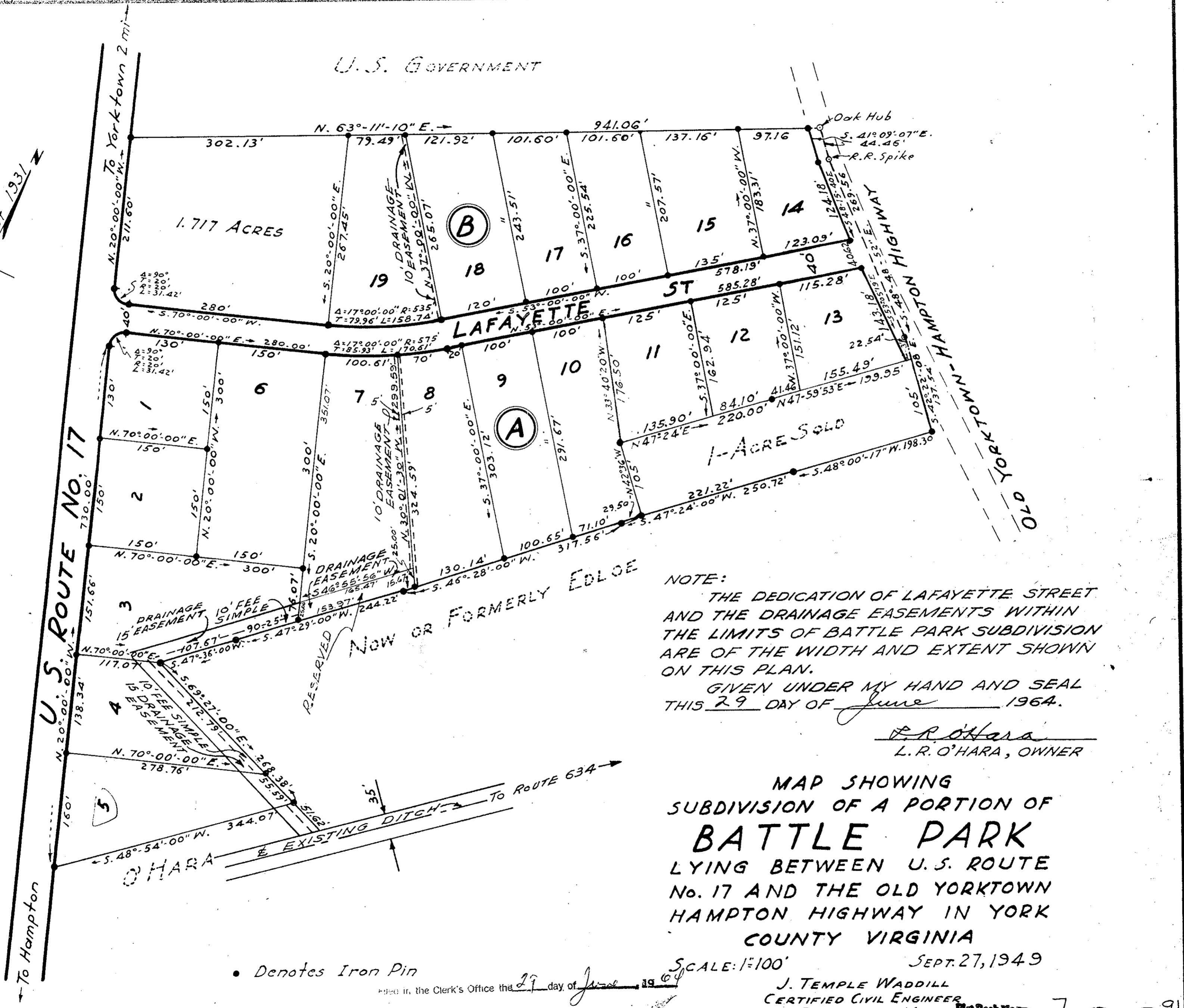


Plat. 7 p. 91

U.S. GOVERNMENT

Mag. Bearings
05 of 1931



NOTE:
 THE DEDICATION OF LAFAYETTE STREET
 AND THE DRAINAGE EASEMENTS WITHIN
 THE LIMITS OF BATTLE PARK SUBDIVISION
 ARE OF THE WIDTH AND EXTENT SHOWN
 ON THIS PLAN.

GIVEN UNDER MY HAND AND SEAL
 THIS 29 DAY OF June 1964.

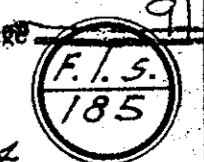
L.R. O'Hara
 L. R. O'HARA, OWNER

MAP SHOWING
 SUBDIVISION OF A PORTION OF
BATTLE PARK
 LYING BETWEEN U.S. ROUTE
 No. 17 AND THE OLD YORKTOWN
 HAMPTON HIGHWAY IN YORK
 COUNTY VIRGINIA

SCALE: 1"=100' SEPT. 27, 1949

J. TEMPLE WADDILL
 CERTIFIED CIVIL ENGINEER
 RICHMOND, VA.

Plat Book No. 7 Page 91



REVISED APRIL 1, 1959
 REVISED JUNE 11, 1964 REVISED JUNE 17, 1964

• Denotes Iron Pin
 Filed in the Clerk's Office the 29 day of June 1964
 Teste: Melville I. Bryant, Clerk
 N.B. 125-P.31
 " 128-P.3
 " 177-P.2
 F.R.M. 204