

W. G. WORNOM

CHRISTIAN MOORE'S ESTATE

W. C. MOORE

W. CLIFTON MOORE  
(DB.89 PG.495)

FRANKLIN EDWARDS ESTATE  
TOTAL ACREAGE - 23.79 AC.±

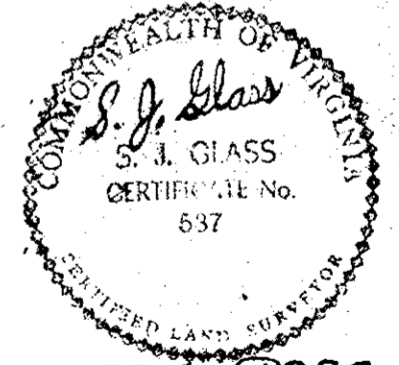
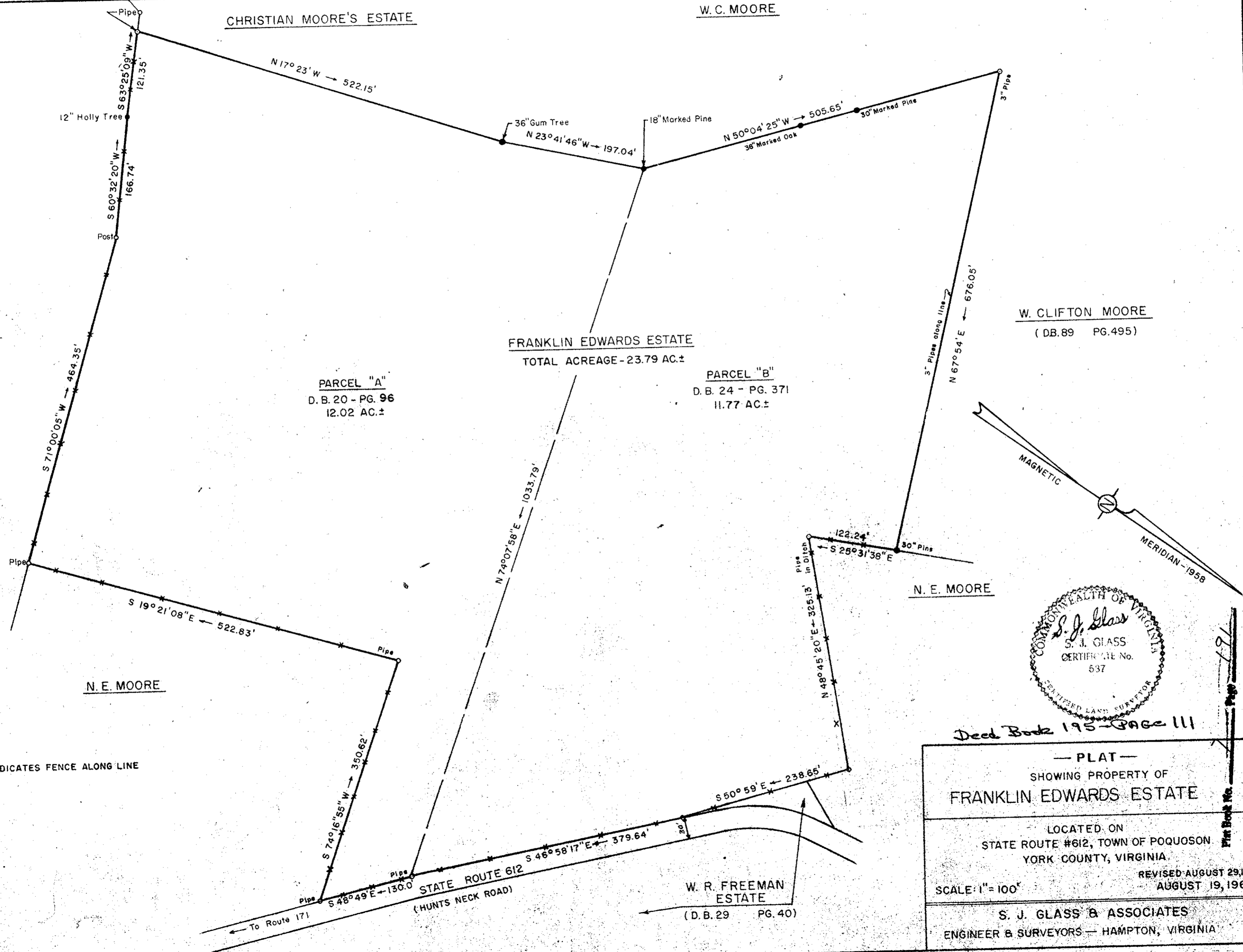
PARCEL "A"  
D. B. 20 - PG. 96  
12.02 AC.±

PARCEL "B"  
D. B. 24 - PG. 371  
11.77 AC.±

N. E. MOORE

N. E. MOORE

W. R. FREEMAN ESTATE  
(D. B. 29 PG. 40)



Deed Book 195 - PAGE 111

— PLAT — SHOWING PROPERTY OF <b>FRANKLIN EDWARDS ESTATE</b>	
LOCATED ON STATE ROUTE #612, TOWN OF POQUOSON YORK COUNTY, VIRGINIA	
SCALE: 1" = 100'	REVISED AUGUST 29, 1962 AUGUST 19, 1960
S. J. GLASS & ASSOCIATES ENGINEER & SURVEYORS — HAMPTON, VIRGINIA	

P.F. - B. 291 1/16 72