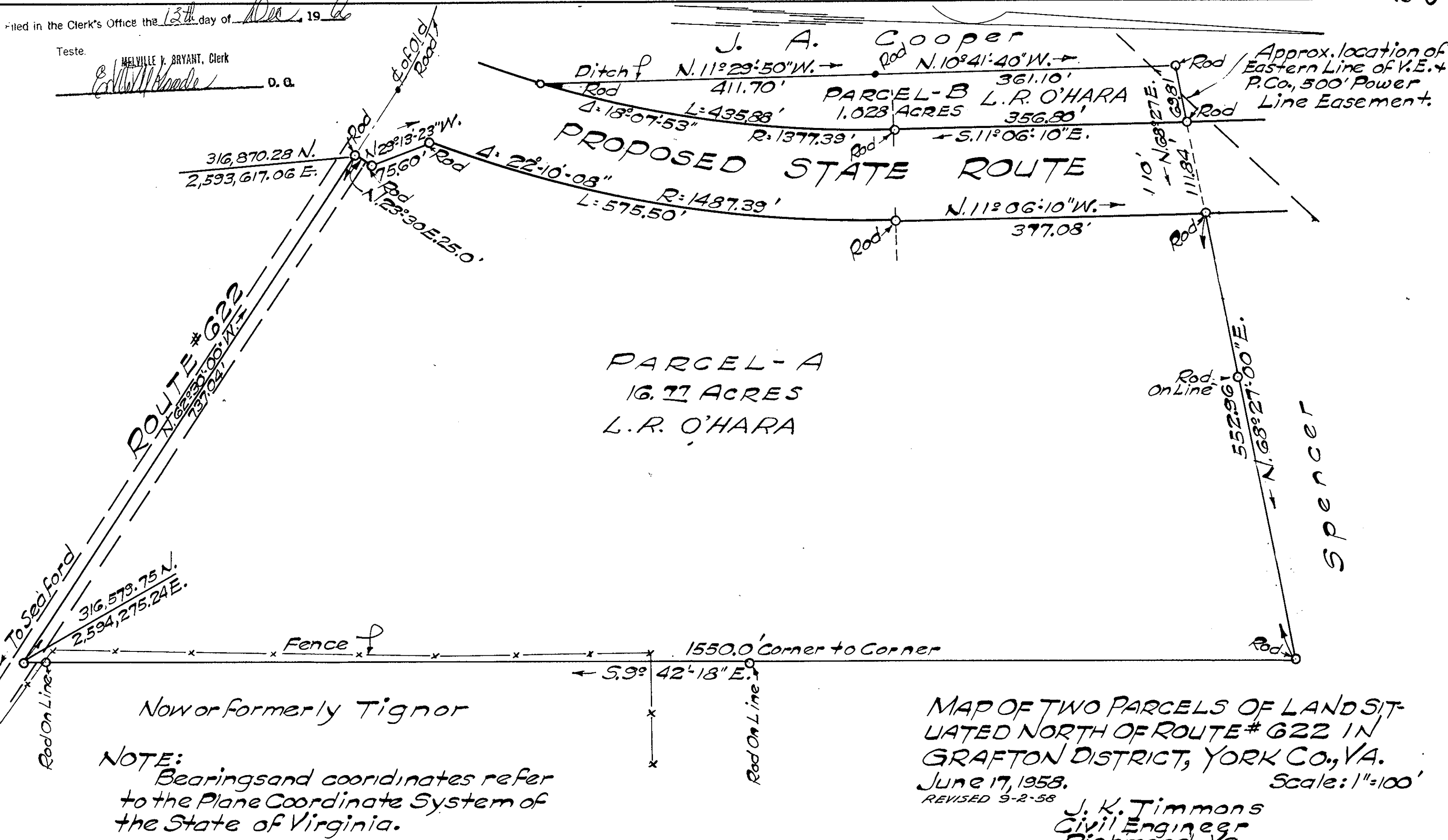


Filed in the Clerk's Office the 13<sup>th</sup> day of Dec 19 66

Teste. MELVILLE V. BRYANT, Clerk  
*E. W. Wade* D. C.

J. A. Cooper

Approx. location of Eastern Line of V.E. & P.Co., 500' Power Line Easement.



316,870.28 N.  
2,593,617.06 E.

N. 23° 13' 23" W.  
75.60'  
N. 23° 30' E. 25.0'

Δ: 18° 07' 53" L: 435.88' R: 1377.39'  
Δ: 22° 10' 08" L: 575.50' R: 1487.39'

Ditch N. 11° 29' 50" W. → 411.70'  
Rod N. 10° 41' 40" W. → 361.10'  
Rod S. 11° 06' 10" E. → 356.80'

N. 11° 06' 10" W. → 377.08'

110' N. 68° 27' E.  
111.84'

Rod On Line  
552.961'  
N. 68° 27' 00" E.

SPENCER

1550.0' Corner to Corner  
S. 9° 42' 18" E.