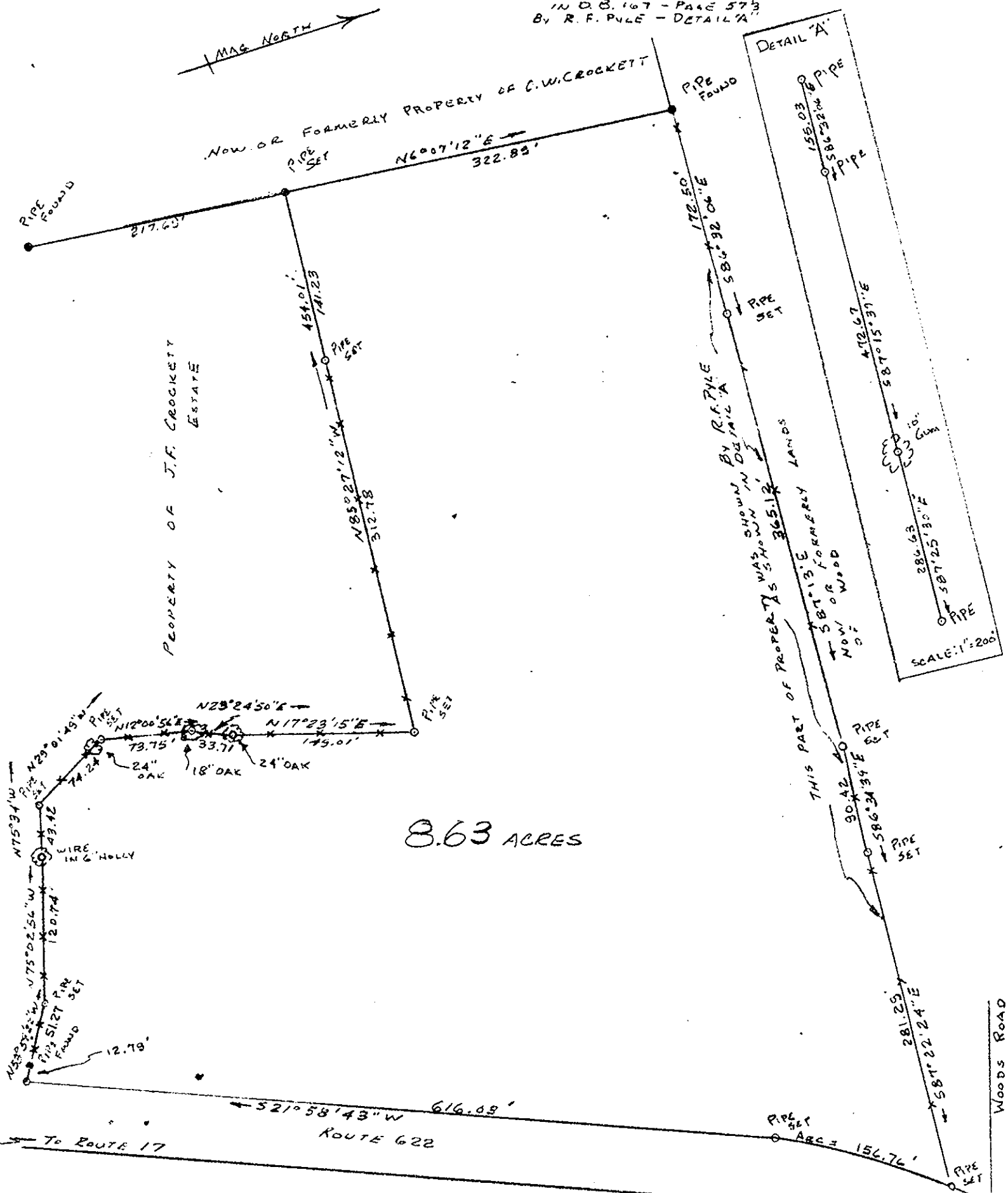


THIS PART OF BOUNDARY  
IN D.B. 167 - PAGE 573  
BY R. F. PYLE - DETAIL 'A'



8.63 ACRES

x-x-x - INDICATES OLD WIRE FENCE FOUND

CURVE DATA:

RADIUS -	375.11'
DELTA -	23° 56' 48"
CHORD -	155.63
CHD. BEARING -	S33° 57' 04" W

*T.N. Hunnicutt III*  
 T.N. HUNNICUTT III  
 CERT. LAND SURVEYOR

REFERENCE - D.B. 24 - PAGE 349

Filed in the Clerk's Office, Circuit Court, York Co., Va.  
 the 20th day of February, 1967

Teste:  
 MELVILLE I. BRYANT, Clerk  
*Melville I. Bryant* D. C.

REVISED PLAT  
 SHOWING PROPERTY OF  
 Lemuel Lester Heirs  
 GRAFTON DISTRICT  
 YORK COUNTY, VIRGINIA

SCALE: 1"=100'      1 FEBRUARY 1967  
 BEARINGS MAGNETIC  
 Plat Book 8, Page 29