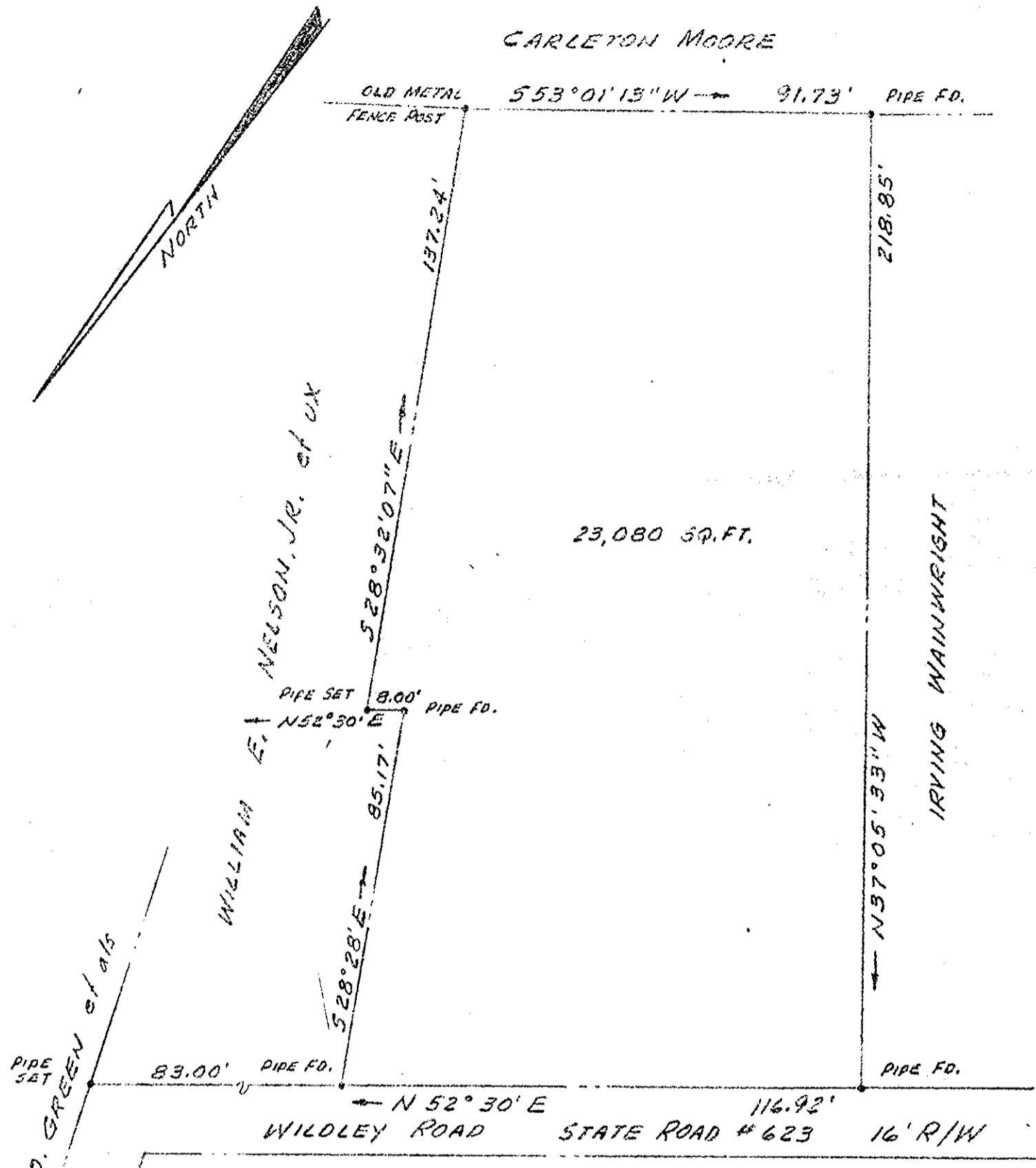


CARLETON MOORE



23,080 SQ. FT.

PLAT OF THE PROPERTY OF
WILLIAM B. WAINWRIGHT

23,080 SQ. FT.

GRAFTON DISTRICT
YORK COUNTY, VIRGINIA

C.K. TUDOR: C.E. & C.L.S.
PYLE ENGINEERING COMPANY
NEWPORT NEWS, VA.

SCALE: 1" = 30'

JULY 14, 1967

C. K. Tudor
C.K. TUDOR: C.E. & C.L.S.

Filed July 17 1967

Chas. L. Bryan

FB. 400, PG. 32-35 DB. 181 PG. 354