

PLAT
SHOWING PROPERTY OF
CHARLES JOSEPH BURKE

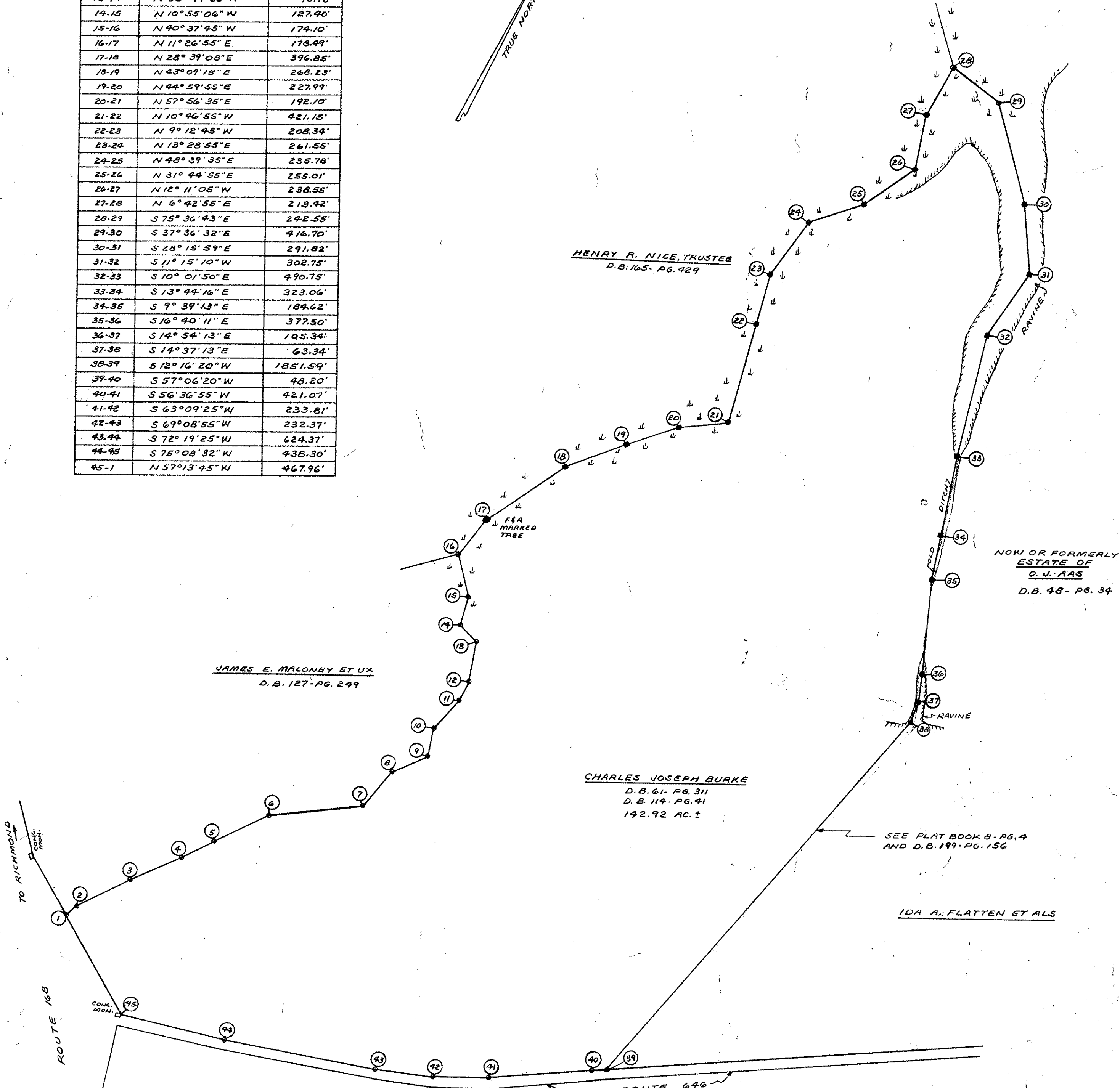
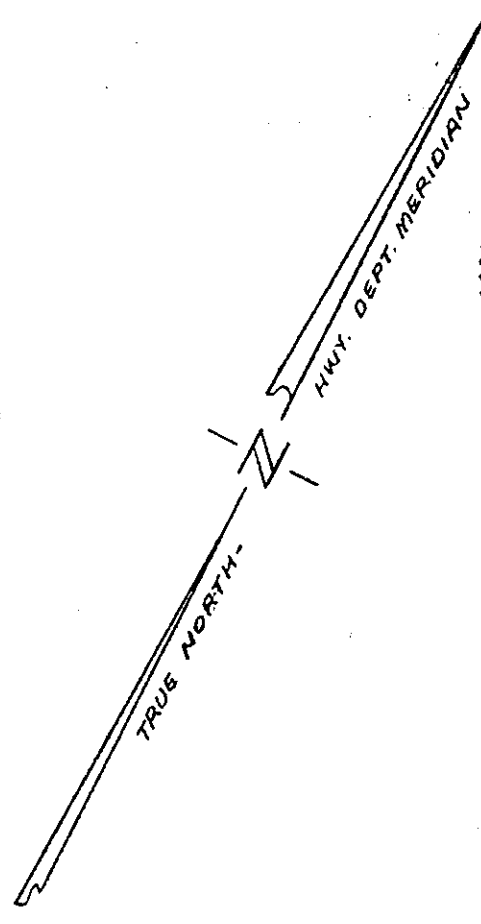
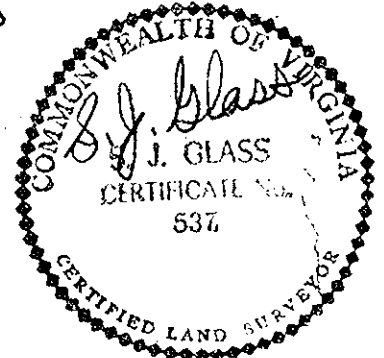
BEING LOCATED ON STATE ROUTE 646
BRUTON DISTRICT, YORK COUNTY, VIRGINIA

SCALE: 1" = 300'

REVISED DECEMBER 2, 1966
DECEMBER 7, 1963

S. J. GLASS & ASSOCIATES
ENGINEERING SERVICES --- HAMPTON, VIRGINIA

LINE	BEARING	DISTANCE
1-2	N 17° 34' 15" E	66.59'
2-3	N 36° 15' 29" E	243.95'
3-4	N 38° 24' 15" E	230.00'
4-5	N 35° 59' 45" E	148.92'
5-6	N 36° 51' 45" E	247.10'
6-7	N 55° 56' 11" E	385.67'
7-8	N 12° 00' 42" E	186.48'
8-9	N 39° 58' 45" E	159.90'
9-10	N 14° 49' 30" W	121.30'
10-11	N 16° 31' 00" E	147.26'
11-12	N 00° 56' 45" W	87.40'
12-13	N 15° 20' 00" W	166.35'
13-14	N 68° 44' 30" W	93.78'
14-15	N 10° 55' 06" W	127.40'
15-16	N 40° 37' 45" W	174.10'
16-17	N 11° 26' 55" E	178.44'
17-18	N 28° 39' 08" E	396.85'
18-19	N 43° 09' 15" E	268.23'
19-20	N 44° 59' 55" E	227.99'
20-21	N 57° 56' 35" E	192.10'
21-22	N 10° 46' 55" W	421.15'
22-23	N 9° 12' 45" W	208.34'
23-24	N 13° 28' 55" E	261.55'
24-25	N 48° 39' 35" E	235.78'
25-26	N 31° 44' 55" E	255.01'
26-27	N 12° 11' 05" W	238.55'
27-28	N 6° 42' 55" E	213.42'
28-29	S 75° 36' 43" E	242.55'
29-30	S 37° 36' 32" E	416.70'
30-31	S 28° 15' 59" E	291.82'
31-32	S 11° 15' 10" W	302.75'
32-33	S 10° 01' 50" E	490.75'
33-34	S 13° 44' 16" E	323.06'
34-35	S 9° 39' 13" E	184.62'
35-36	S 16° 40' 11" E	377.50'
36-37	S 14° 54' 13" E	105.34'
37-38	S 14° 37' 13" E	63.34'
38-39	S 12° 16' 20" W	1851.59'
39-40	S 57° 06' 20" W	48.20'
40-41	S 56° 36' 55" W	421.07'
41-42	S 63° 09' 25" W	233.81'
42-43	S 69° 08' 55" W	232.37'
43-44	S 72° 19' 25" W	624.37'
44-45	S 75° 08' 32" W	438.30'
45-1	N 57° 13' 45" W	467.96'



HENRY R. NICE, TRUSTEE
D.B. 165 - PG. 429

JAMES E. MALONEY ET UX
D.B. 127 - PG. 249

CHARLES JOSEPH BURKE
D.B. 61 - PG. 311
D.B. 114 - PG. 41
142.92 AC. ±

NOW OR FORMERLY
ESTATE OF
O. J. AAS
D.B. 48 - PG. 34

SEE PLAT BOOK 9 - PG. 4
AND D.B. 199 - PG. 156

IDA A. FLATTEN ET ALS

NOTE:
RIGHT OF WAY OF ROUTE 644 IS
SHOWN IN ACCORDANCE WITH
PRESCRIPTIVE RIGHTS OF COMMON-
WEALTH OF VIRGINIA.

—●— INDICATES IRON PIPE
—■— INDICATES HUB

Filed in the Clerk's Office, Circuit Court, York Co., Va.
the 28th day of December, 1967

Teste:
Melville L. Bryant
MELVILLE L. BRYANT, Clerk
D. C.