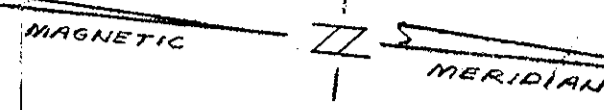


PLAT
SHOWING PROPERTY OF
JOHN W. HUNT, CHARLES H. HUNT
& E. FRED LOWE, JR.

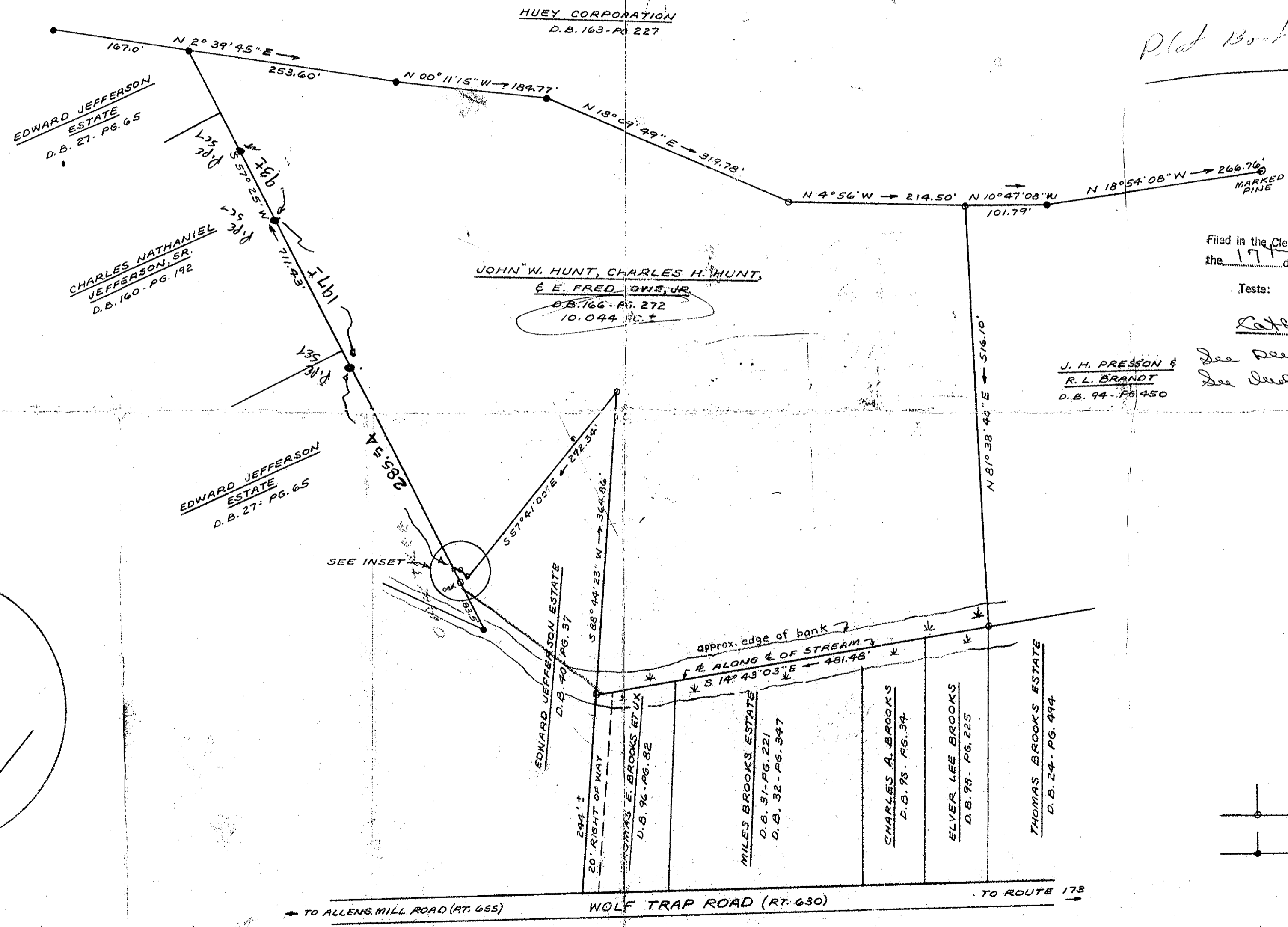
BEING LOCATED ON WOLF TRAP ROAD (RT. 630)
GRAFTON DISTRICT
YORK COUNTY, VIRGINIA

SCALE: 1" = 100' OCTOBER 3, 1964

S. J. GLASS & ASSOCIATES
ENGINEERING SERVICES --- HAMPTON, VIRGINIA



Plat Book 18-



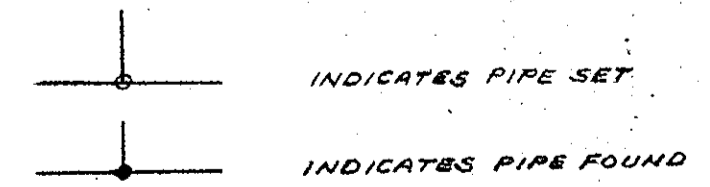
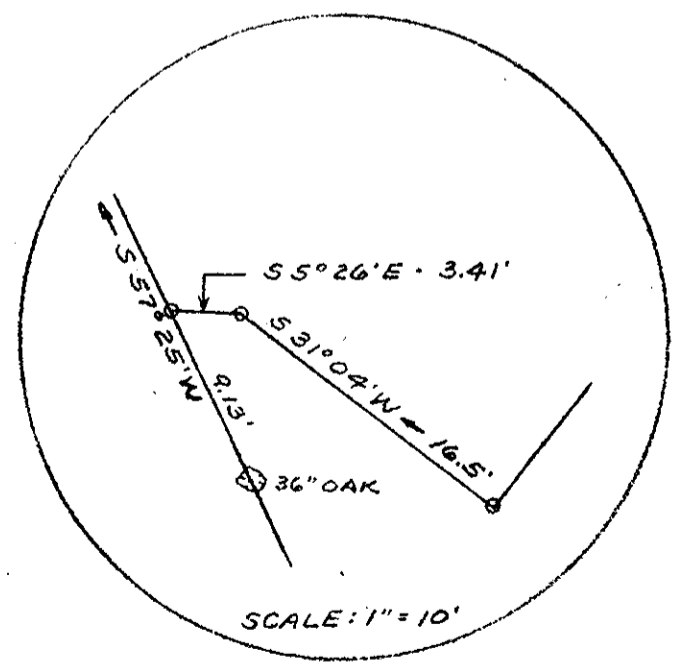
Filed in the Clerk's Office, Circuit Court, York Co., Va.
the 17th day of July 1969

Teste:
MELVILLE I. BRYANT, Clerk

Catherine Bender
See Deed Book 217, p. 564
See Deed Book 166, p. 272

J. H. PRESSON &
R. L. BRANDT
D. B. 94 - PG. 450

- REFERENCES
- P. B. 1 - PG. 32
 - D. B. 20 - PG. 348
 - P. B. 4 - PG. 101
 - P. B. 1 - PG. 17
 - P. B. 2 - PG. 4
 - P. B. 6 - PG. 65



TO ALLENS MILL ROAD (RT. 655) WOLF TRAP ROAD (RT. 630) TO ROUTE 173