

LAMBERT GRID SYSTEM, VIRGINIA SOUTH SECTION

POINT	LATITUDE	DEPARTURE	REMARKS
'PITZ'	336,159.06	2,577,396.80	U.S.C.G.S. 1949
ORIGIN	341,733.24	2,573,101.40	CENTER 6600' RAD. SAFETY ZONE
A	336,070.32	2,576,499.91	I.P. SET BY U.S.A. CORPS OF ENGRS
1	336,052.40	2,576,461.17	
2	336,070.79	2,576,271.57	
3	336,074.69	2,576,027.42	
4	336,050.02	2,575,813.12	
5	335,995.42	2,575,599.81	
6	335,768.75	2,575,553.47	
7	335,715.79	2,575,812.54	
8	336,006.31	2,575,638.31	

AREA OF 1-2-3-4-8-6-7-1 = 4.297 ACRES

3A	336,067.72	2,575,906.26	N.E. COR. PARCEL 3
----	------------	--------------	--------------------

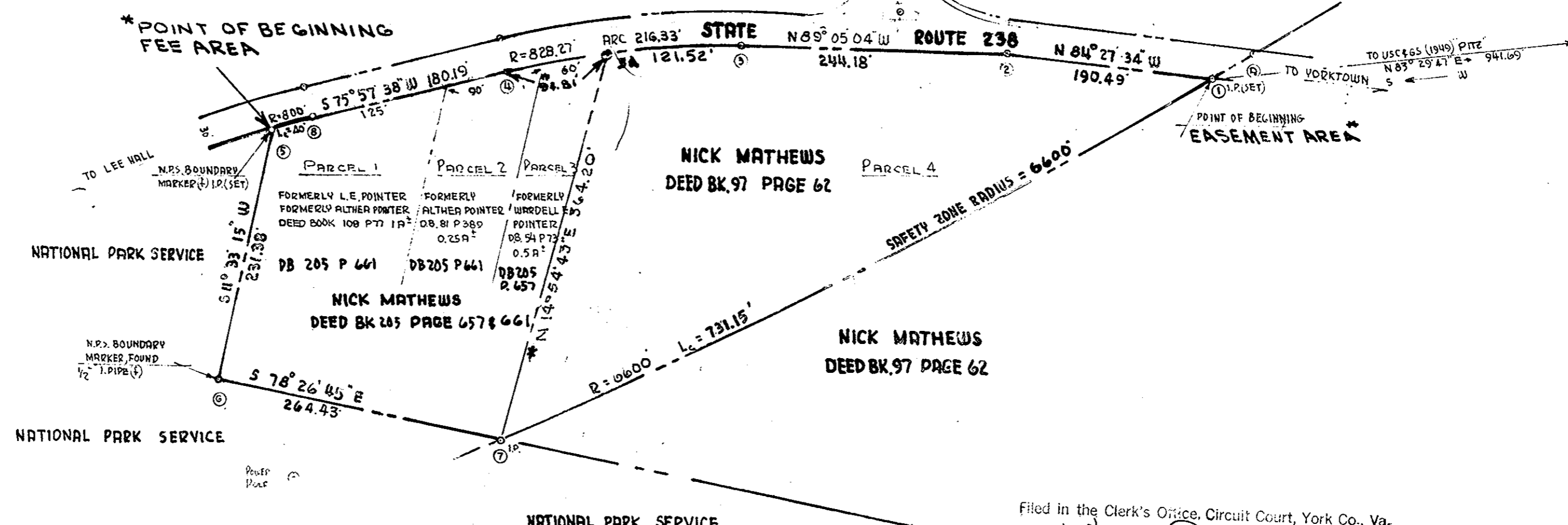
ADDED BY LANT DIV. 14 APRIL 1969

2576500

174

336,000

335,500



Filed in the Clerk's Office, Circuit Court, York Co., Va. the 4th day of August 1969

Teste:
 MELVILLE I. BRYANT, Clerk
Matthew R. ...
Plot Book 8, Page 174

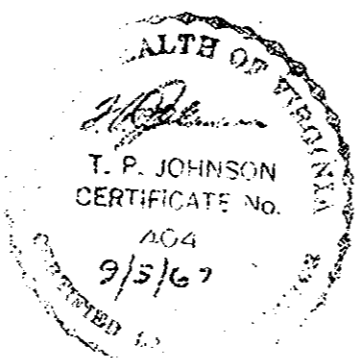
SURVEY OF PROPERTY
PROPOSED ACQUISITION OF PRIVATE LAND
SOUTH OF VA RT. 238 AND WEST OF THE TOWN

SAFETY ZONE, NAVAL WEAPONS STATION, YORKTOWN, VA.

SURVEYED: JULY 1967 SCALE: 1" = 100'

FREEMAN & JOHNSON
 ENGINEERS & SURVEYORS

EXHIBIT "B"



2575500