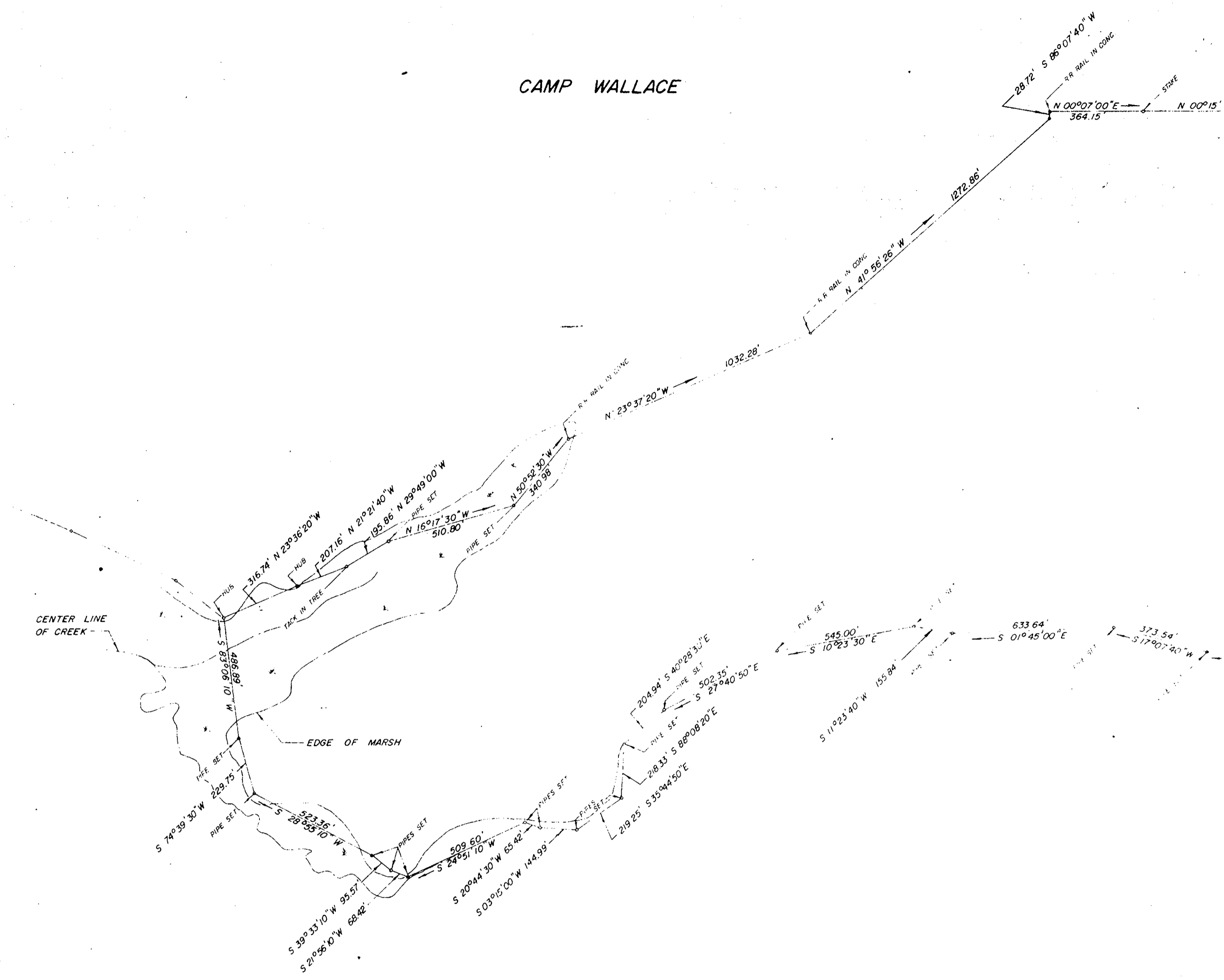


CAMP WALLACE



MAGNETIC NORTH

Filed in the Clerk's Office, Circuit Court, York Co., Va.
the 16th day of Sept 1919

Testes:
HELVIE L. BRYANT, Clerk
Edith E. Bryant
D. C.

10B #221 p. 739

I hereby certify that this survey is correct to the best of my knowledge and belief.

S. J. Stalham