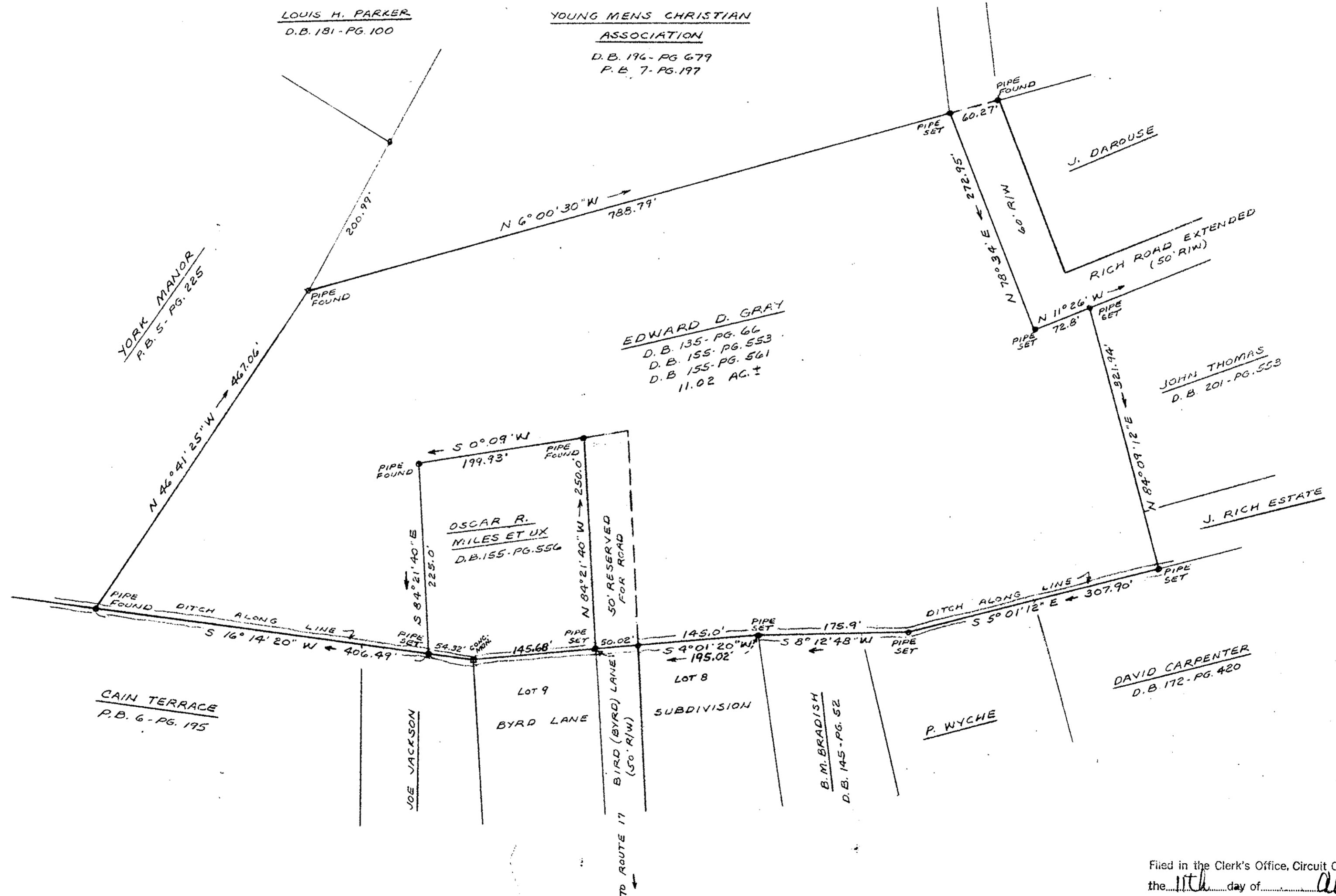
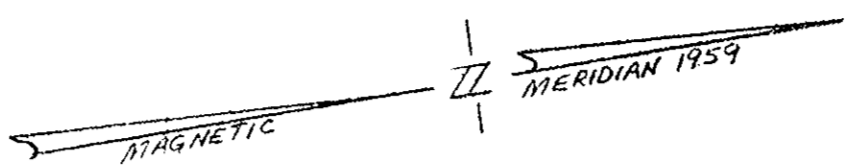


PLAT
SHOWING PROPERTY OF
EDWARD D. GRAY
TO BE CONVEYED TO
LOUIS HARRY PARKER

BEING LOCATED ON RICH ROAD EXTENDED & BIRD LANE
BETHEL DISTRICT, YORK COUNTY, VIRGINIA

SCALE: 1" = 100' JULY 30, 1970

S. J. GLASS AND ASSOCIATES
ENGINEERING SERVICES - HAMPTON, VIRGINIA



Filed in the Clerk's Office, Circuit Court, York Co., Va.
the 11th day of Aug 1970

Teste:
Melville I. Bryane, Clerk
D.C.
Deed Book # 228, p. 8
Deed Book #, p. 246