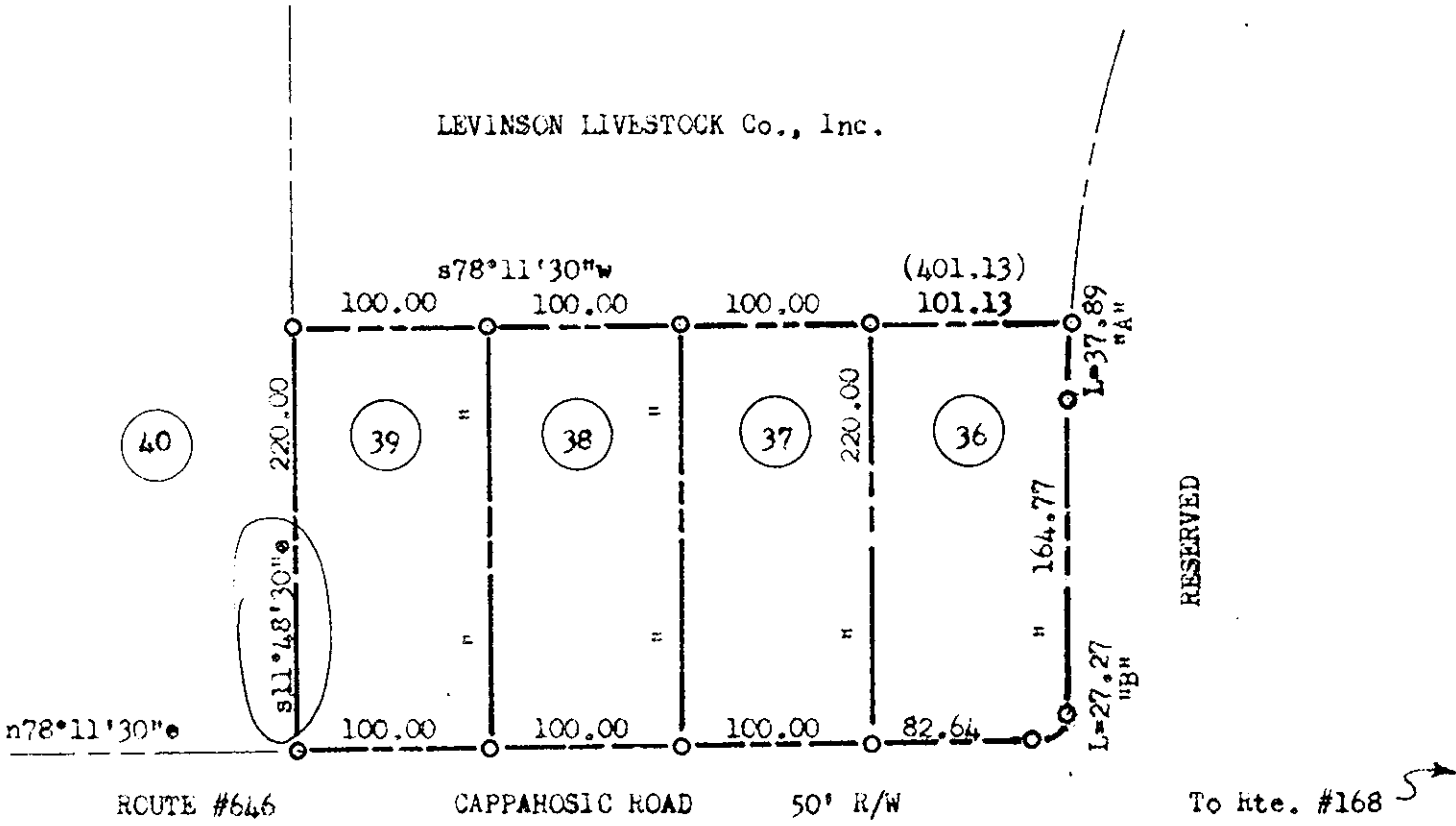


LEVINSON LIVESTOCK Co., Inc.



1595.99 to g PLANTATION Dr.

Record

NOTE:

Iron pipes at all corners,
Bearings are clockwise.

Ref.: Lot #36, DB 196 p 301

37	202	509
38	204	255
39	181	628

CURVE DATA:

"A" = R=636.96, L=37.89, I=003°24'30",
T= 18.95, C=37.88, CB=801°36'00"W,
"B" = R= 17.36, L=27.27, I=090°00'00",
R= 17.36, C=24.55, CB=843°11'30"W.

Filed in the Clerk's Office, Circuit Court, York Co., Va.
the 7th day of Sept 1971

Teste:

MELVILLE I. BRYANT, Clerk

Edith Elbert

D. C.

Stephen Stephens
STEPHEN STEPHENS
CERTIFIED LAND SURVEYOR, 828 & 130

WILLIAMSBURG, VA.

PLAT OF CORRECTION

Of:

LOTS #36 thru #39, inclusive,
SCIMMINO FARMS -

Scale: 1" = 100'

July 1971

BRUTON DISTRICT, YORK COUNTY, VIRGINIA