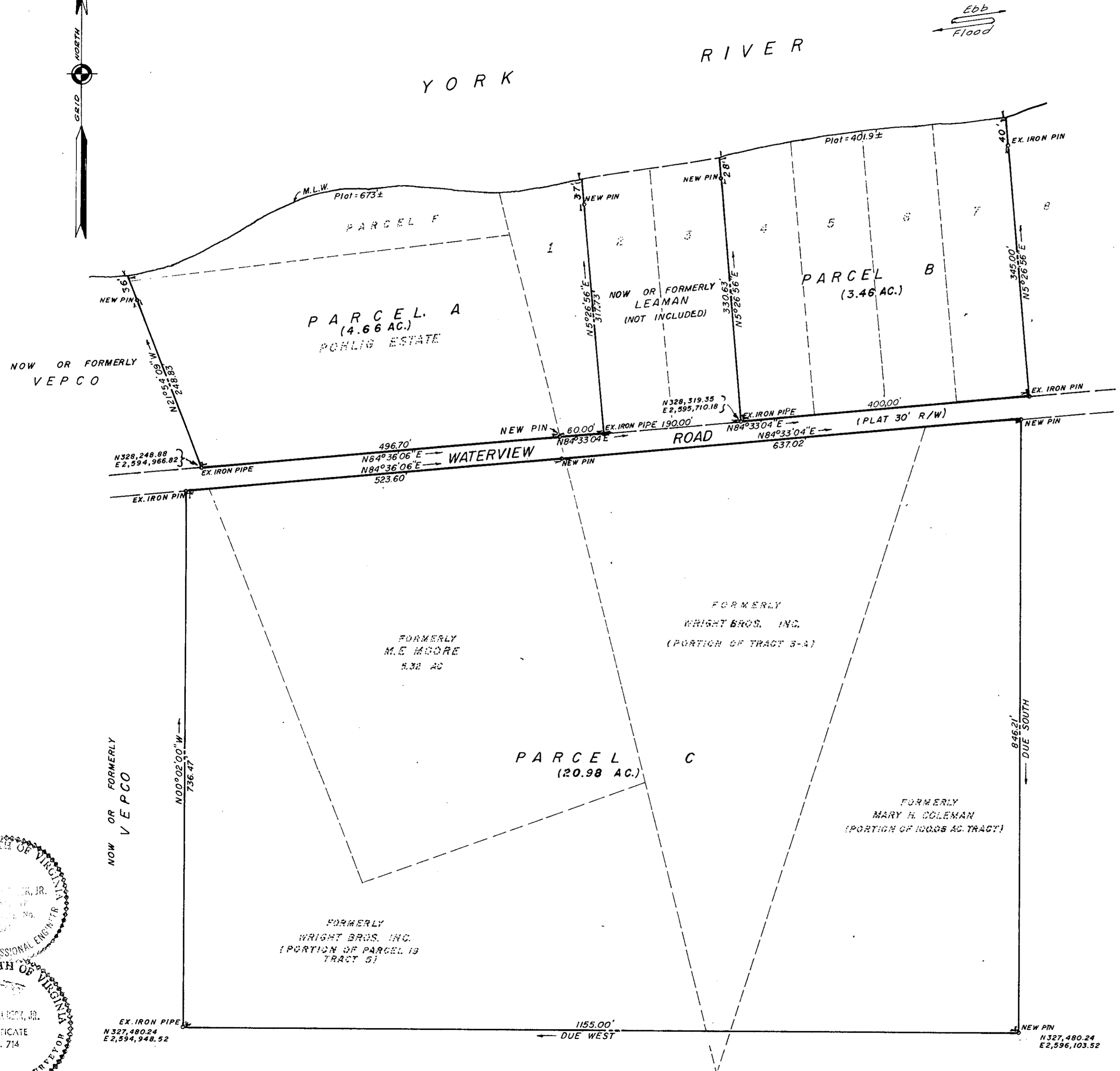
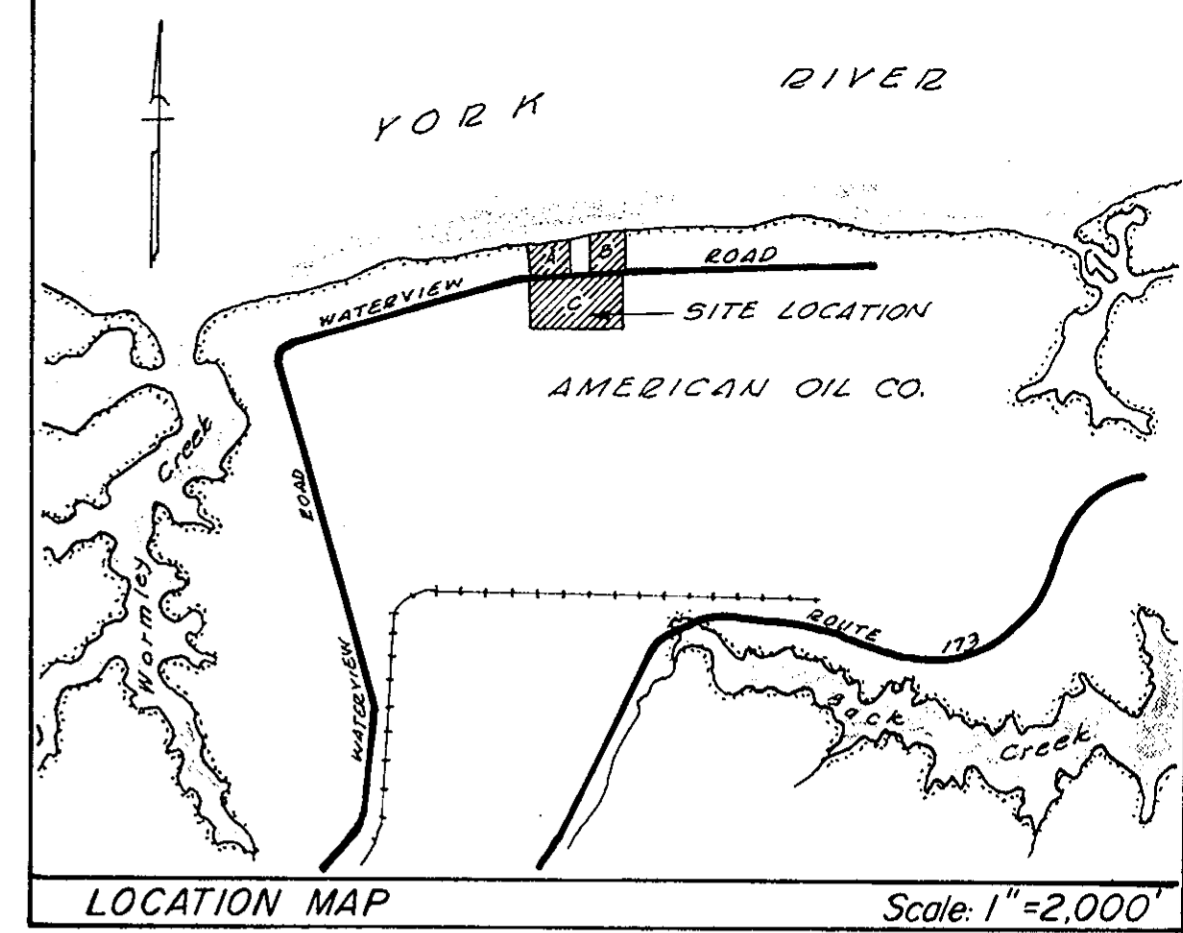


NOTE: BEARINGS AND COORDINATES REFER TO THE PLANE COORDINATE SYSTEM OF THE STATE OF VIRGINIA.



VIRGINIA: County of York to-wit:
 In the Clerk's Office of the Circuit Court for the County of York, the 2nd day of May, 1972
 This Deed was presented with the original and annexed and admitted to record at 1:35 o'clock P.M.
 Teste: MEYILLE L. BRYANT, Clerk
 By: [Signature] Deputy Clerk
D.B. # 243, p. 405
 SURVEY OF PARCEL F, PARCEL - POHLIG ESTATE ON NORTH SIDE OF WATERVIEW ROAD & LOTS 1, 4, 5, 6, 7 BLOCK 1 SECTION B - WATERVIEW (PLAT BOOK 1, P. 632 YORK CO.) AND PARCELS INCLUDED IN D.B. 94, P. 251, CONSISTING OF 5.32 ACRES, PORTION OF TRACT 3-A, A PORTION OF PARCEL 19 TRACT 5, & A PORTION OF A 100.006 ACRE PARCEL.

YORK COUNTY, VIRGINIA
 FOR
THE AMERICAN OIL COMPANY
 (A SUBSIDIARY OF STANDARD OIL COMPANY OF INDIANA)

SCALE: 1"=100' FEBRUARY, 1972.

N. MERRILL BECK, JR. & ASSOCIATES
 CIVIL ENGINEERS & SURVEYORS
 NORFOLK, VIRGINIA

