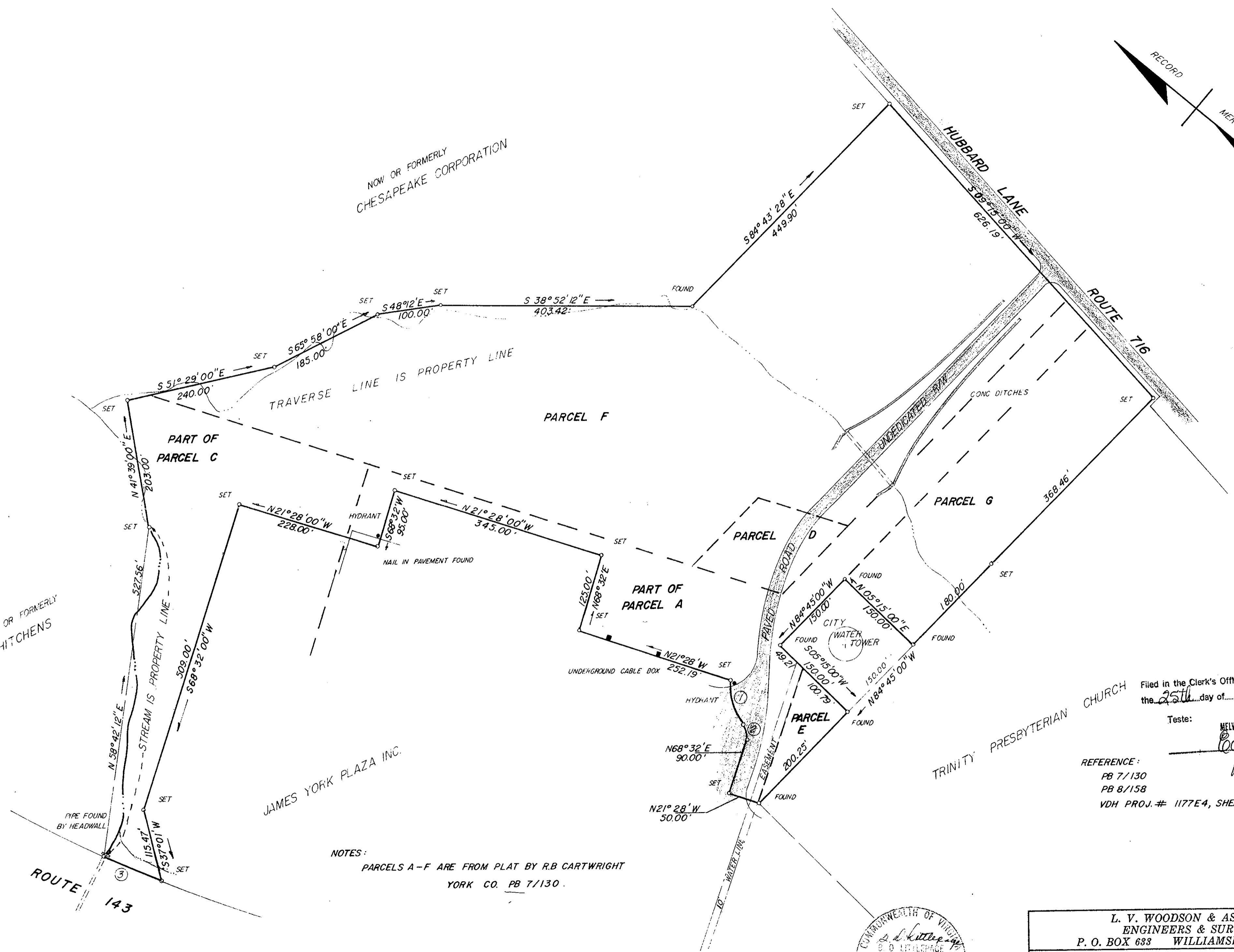


NOW OR FORMERLY
CHESAPEAKE CORPORATION

NOW OR FORMERLY
A.W. HITCHENS

JAMES YORK PLAZA INC.



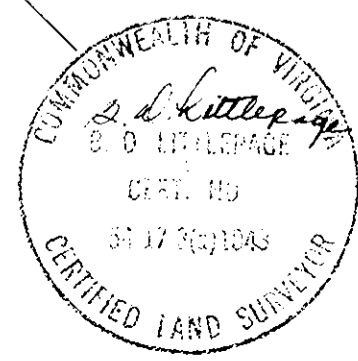
NOTES:
PARCELS A-F ARE FROM PLAT BY R.B. CARTWRIGHT
YORK CO. PB 7/130.

Filed in the Clerk's Office, Circuit Court, York Co., Va.
the 25th day of May 1972

Teste:
Melville J. Bryant, Clerk
Edith W. Elbert D.C.
OB # 204, p.

REFERENCE:
PB 7/130
PB 8/158
VDH PROJ. # 1177E4, SHEET 5

TRINITY PRESBYTERIAN CHURCH



L. V. WOODSON & ASSOCIATES
ENGINEERS & SURVEYORS
P. O. BOX 633 WILLIAMSBURG, VIRGINIA

**17,693 ACRES STANDING IN THE
NAME OF PHILIP O. RICHARDSON
ET ALS, BRUTON DIST., YORK CO., VA.**

SCALE: 1" = 100' DWG. 610
DATE: AUGUST 25, 1971

CURVE DATA

NO.	RADIUS	DELTA	LENGTH	TANGENT	CHORD	CHORD BEARING
1	115.06	38° 57' 44"	78.24'	40.70'	76.74'	N 33° 58' 52" E
2	25.00	54° 01' 59"	23.57'	12.75'	22.71'	N 41° 31' 00" E
3	5649.58	1° 01' 14"	100.62	50.31'	100.62'	N 16° 34' 00" W