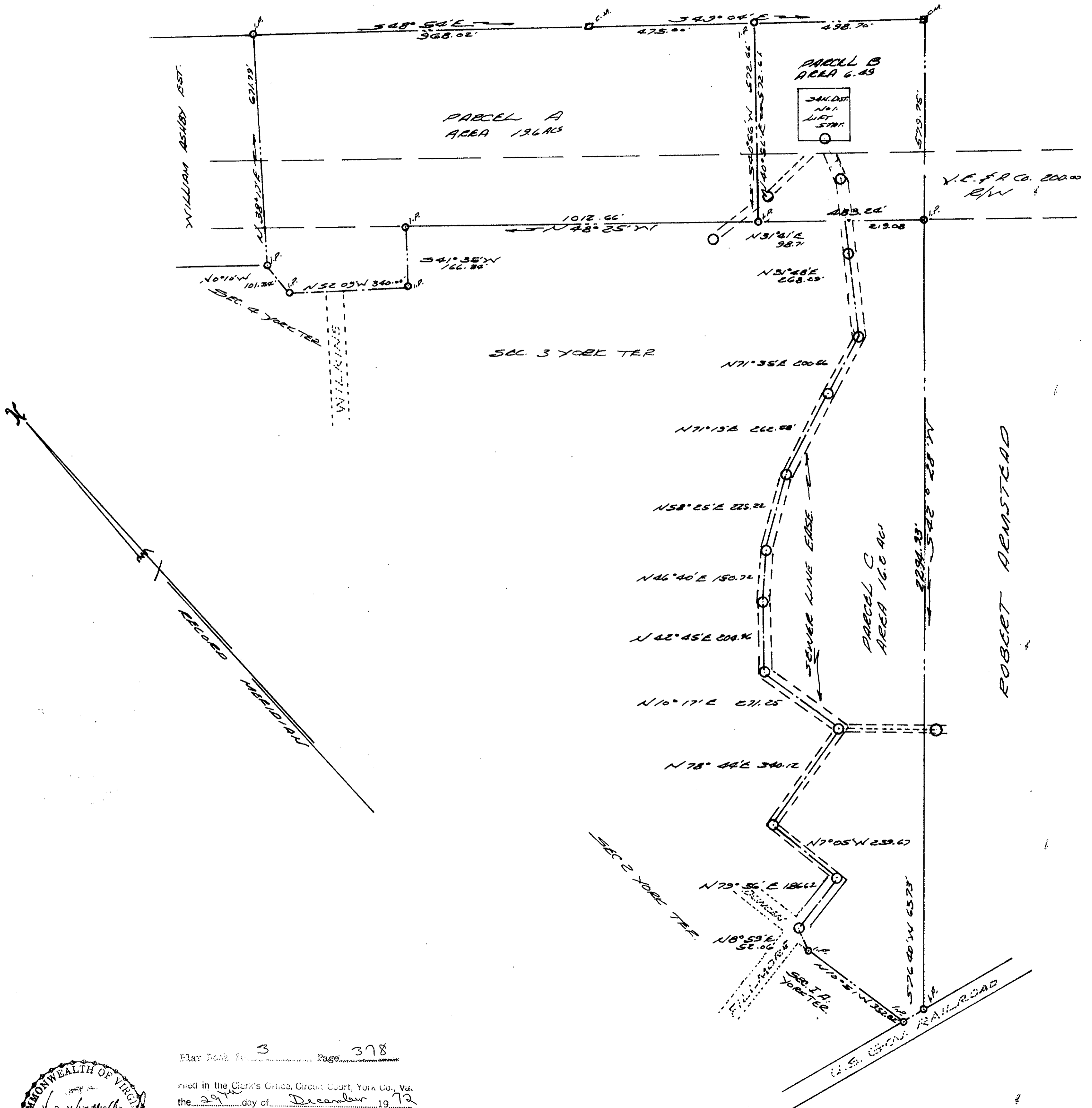


HUMPHREY LEE EST



Plat Book No. 3 Page 378

Filed in the Clerk's Office, Circuit Court, York Co., Va. the 29th day of December, 1972

Teste: HEATHER I. BOWEN, Clerk
Robaine Bender D.C.



VINCENT D. McMANUS SR. & ASSOC'S
WILLIAMSBURG, VIRGINIA
LAND SURVEYING

PLAT SHOWING BOUNDARY SURVEY OF A
PARCELS OF LAND STANDING IN THE NAME
OF
JEWEL CORP.
BRUTON DIST. YORK COUNTY, VA.
27 DEC. 1972 TOTAL AREA - 42.29 AC
SCALE 1"=200'

Q DENOTES MAN HOLES