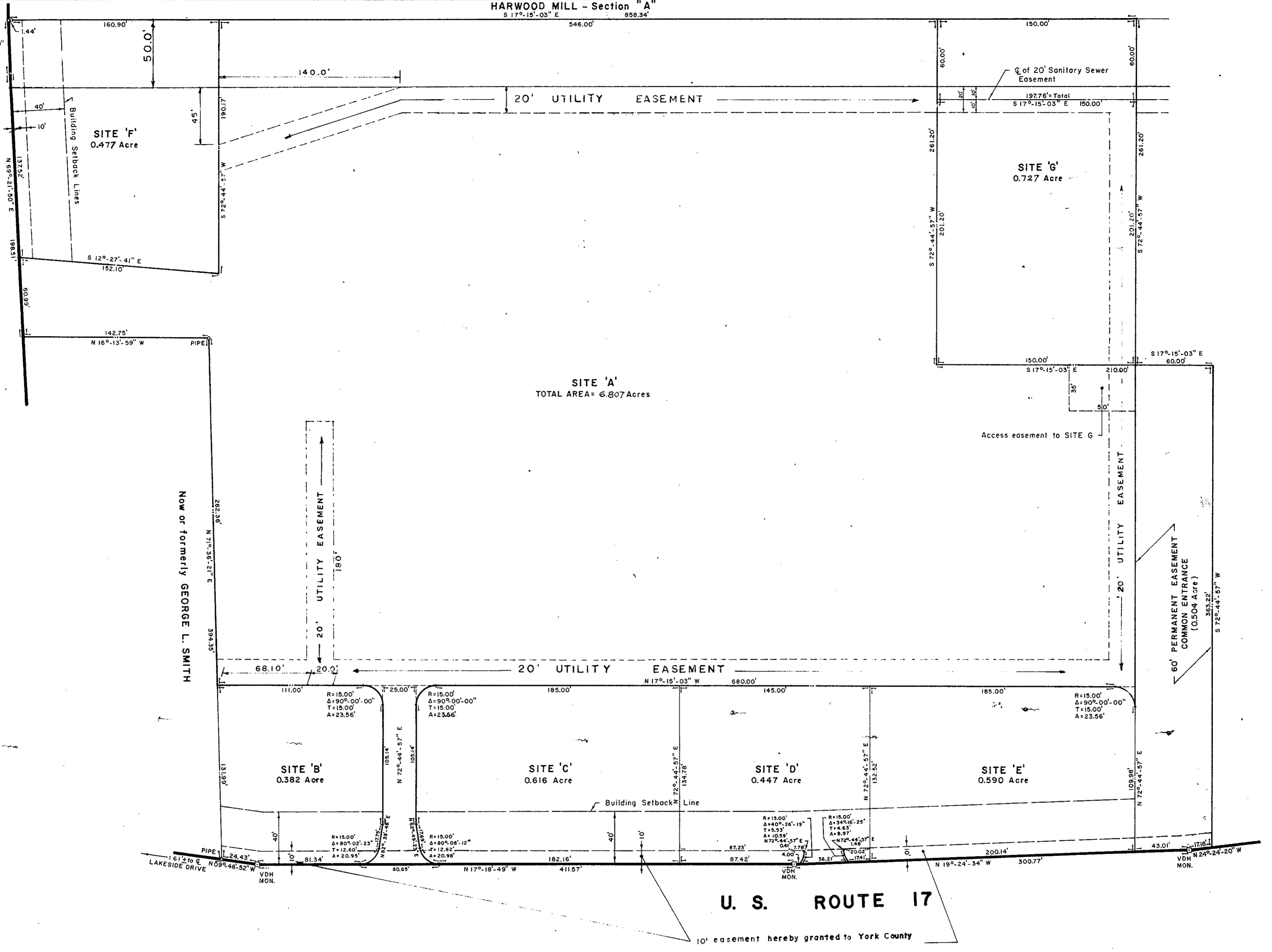


HARWOOD MILL - Section "A"  
S 17°-15'-03" E 546.00' 858.34'

R=2894.79'  
Δ=00°-47'-50"  
T=20.14'  
C=40.28'  
A=40.28'

LAKESIDE DRIVE  
(STATE ROUTE 620)



Filed in the Clerk's Office, Circuit Court, York Co., Va.  
the 5th day of February 1979

Teste:  
Edith M. Elliott, Clerk  
*Edith M. Elliott*  
Plat Book 9, Page 289.

PLAT SHOWING EASEMENT  
GRANTED TO YORK COUNTY

Scale 1" = 50' 0" Nov. 3, 1978

