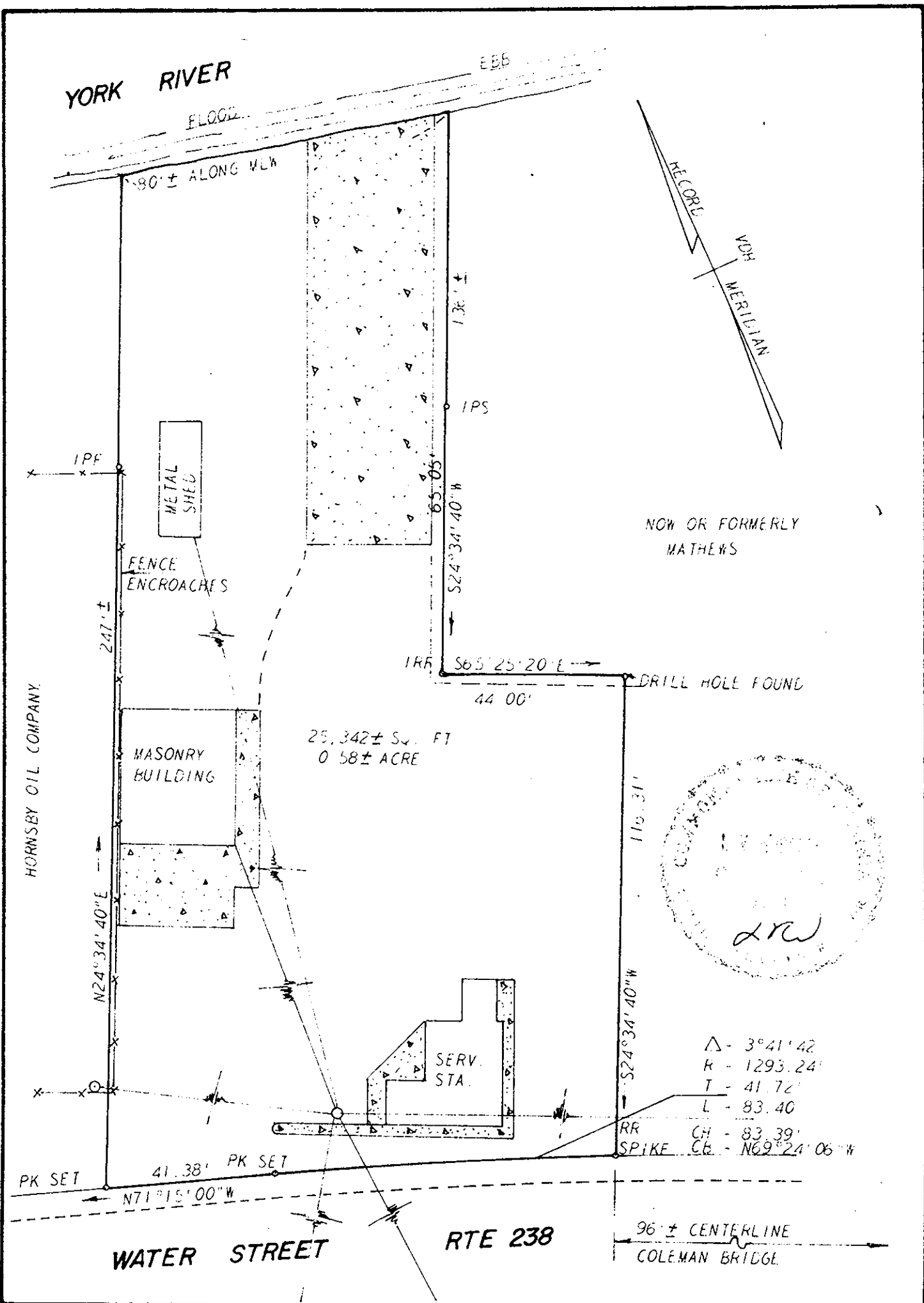


Teste:

Edith M. Elliott, Clerk

441

Edith M. Elliott



architects and engineers, inc architects, engineers, surveyors, and planners Williamsburg, Virginia

LEGEND IP IRON PIN. --- PROPERTY LINE. - - - CENTERLINE - - - EASEMENT LINE

A SURVEY OF 0.58 ACRE OF LAND AND IMPROVEMENTS
 STANDING IN THE NAME OF BERTHA A. WAINWRIGHT
 LYING IN YORKTOWN, VIRGINIA

SCALE 1" = 30' REF PB 39/30 DATE MAY 11, 1978 AREA 0.58±ACRE