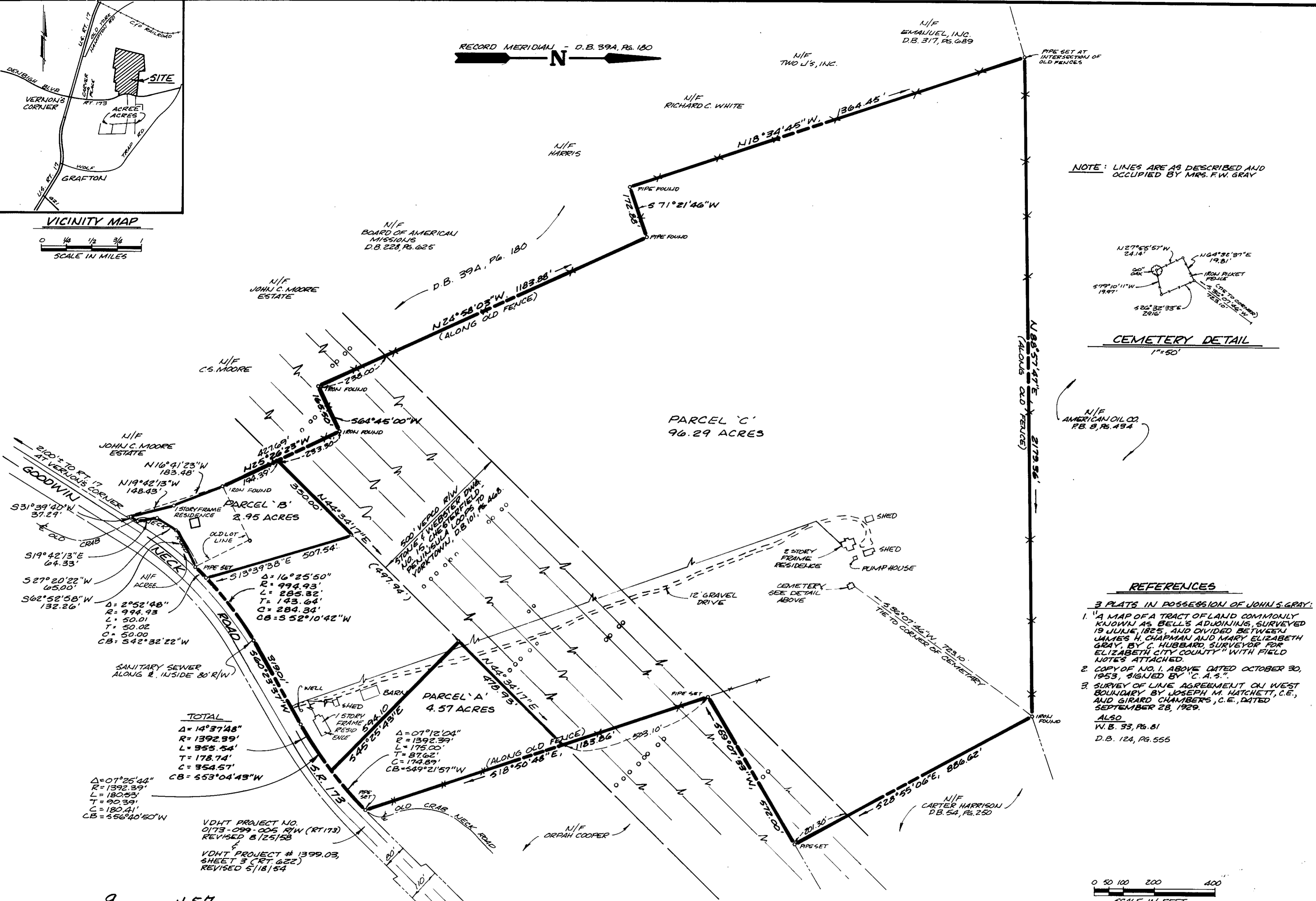


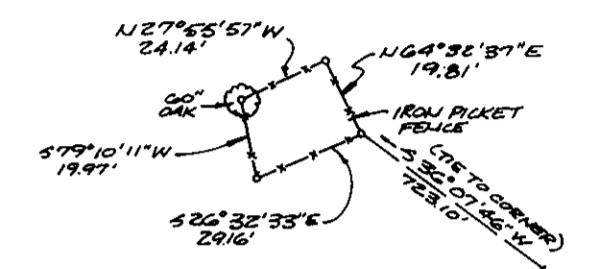
VICINITY MAP



RECORD MERIDIAN - D.B. 39A, Pg. 180



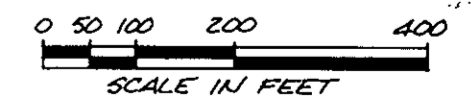
NOTE: LINES ARE AS DESCRIBED AND OCCUPIED BY MRS. F.W. GRAY



CEMETERY DETAIL
1"=50'

REFERENCES

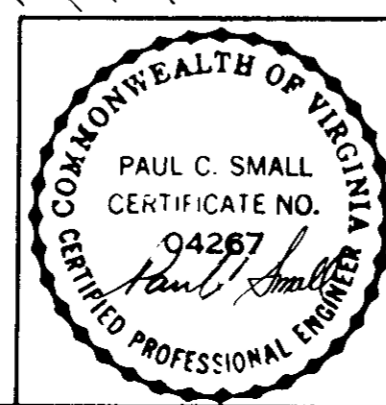
- 3 PLATS IN POSSESSION OF JOHN S. GRAY:
1. "A MAP OF A TRACT OF LAND COMMONLY KNOWN AS BELL'S ADJOINING, SURVEYED 19 JULIE, 1825, AND DIVIDED BETWEEN JAMES H. CHAPMAN AND MARY ELIZABETH GRAY, BY C. HUBBARD, SURVEYOR FOR ELIZABETH CITY COUNTY" WITH FIELD NOTES ATTACHED.
 2. COPY OF NO. 1. ABOVE DATED OCTOBER 30, 1953, SIGNED BY "C. A. S."
 3. SURVEY OF LINE AGREEMENT ON WEST BOUNDARY BY JOSEPH M. HATCHETT, C.E., AND GIRARD CHAMBERS, C.E., DATED SEPTEMBER 28, 1929.
- ALSO
W.B. 33, Pg. 81
D.B. 124, Pg. 555



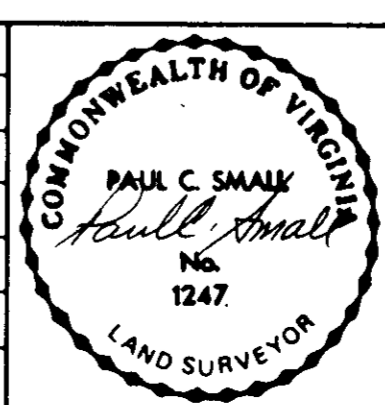
Plat Book No. 9 Page 457

Filed in the Clerk's Office, Circuit Court, York Co., Va.,
the 6th day of November 1979

Teste:
Edith M. Elliott, Clerk
Betty Hausel



No.	DATE	REVISION/COMMENT/NOTE	BY
4	5/15/01	PARCELS A, B, & C	
3	9/11/80	REVISED NORTH LINE 9.39 AC. PARCEL	E.E.Z.
2	8/13/80	REVISED FOR PARTIAL TAKING	E.E.Z.
1	4/17/80	ADDED CEMETERY	R.C.S.



**SURVEY OF 103.81 ACRES
PARCELS A, B & C**

NELSON DISTRICT, YORK COUNTY, VIRGINIA

Small Engineering, Inc.
Engineers, Planners, Surveyors
625 Ironbound Road 804 253-0040
WILLIAMSBURG, VA 23185

Scale: 1" = 200'
Date: NOVEMBER, 1979
Job: Y07