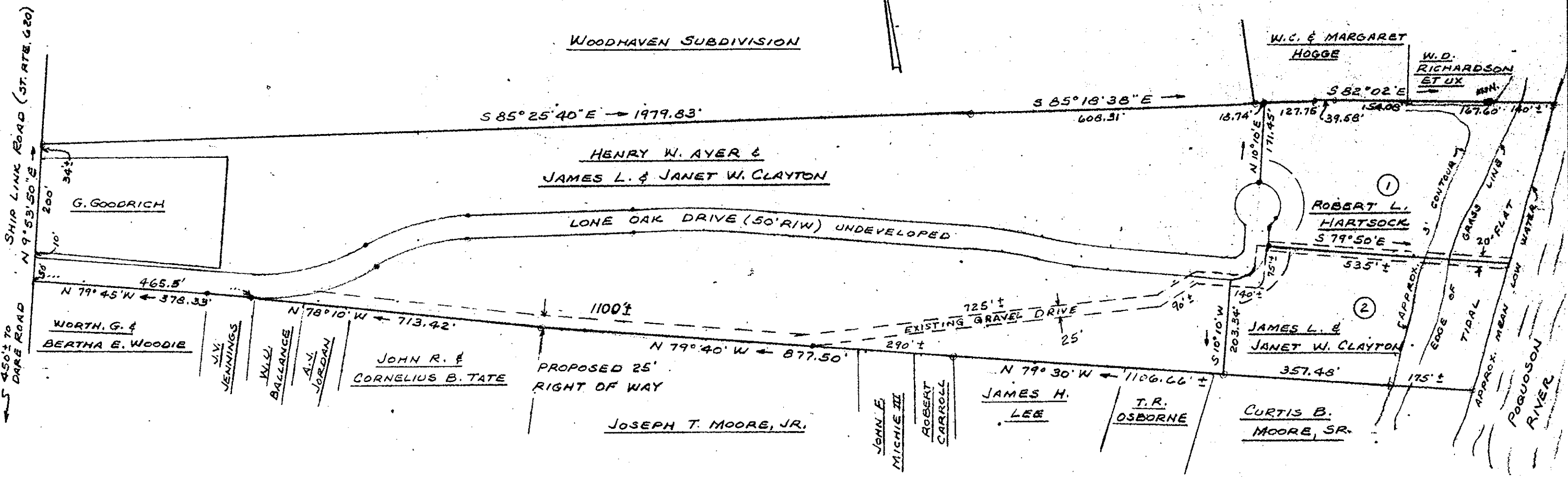


PLAT
 SHOWING TEMPORARY EASEMENT
 FOR INGRESS & EGRESS TO PROPERTY OF
 ROBERT L. HARTSOCK

BEING LOCATED IN
 YORK COUNTY, VIRGINIA

SCALE: 1" = 200' AUGUST 19, 1983

S. J. GLASS & ASSOCIATES
 ENGINEERING SERVICES



Filed in
 the

Plat Book No. 9 Page 586

Filed in the Clerk's Office, Circuit Court, York Co., Va.
 the 30 day of August 19 83

Teste:
 Edith M. Elliott, Clerk
 Nancy B. Kane D.C.

102-201077