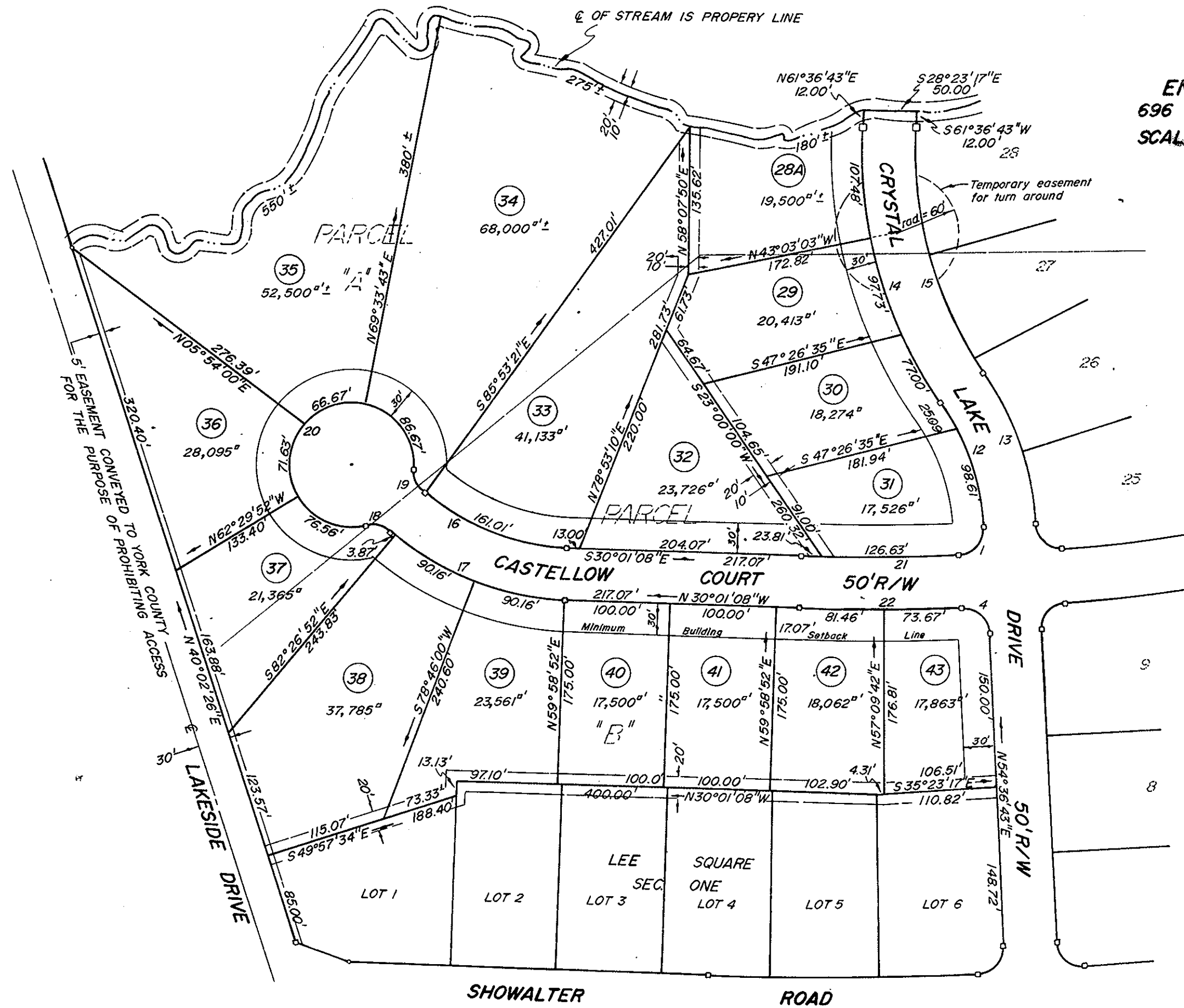


VICINITY MAP
SCALE 1" = 2,000'

Now or Formerly
MOORE & SARFAN ASSOCIATES

QUARTERMARSH ESTATES SECTION TWO COUNTY OF YORK VIRGINIA

COENEN & ASSOCIATES, INC.
ENGINEERS — PLANNERS — SURVEYORS
696 J. CLYDE MORRIS BLVD. — NEWPORT NEWS, VA.
SCALE: 1" = 100' DATE: APRIL 16, 1985



SEE SHEET ONE

APPROVED:
 YORK COUNTY BOARD OF SUPERVISORS
 BY *[Signature]*
 PLAT APPROVING AGENT
 DATE June 4, 1985

STATE OF VIRGINIA
 COUNTY OF YORK
 IN THE CLERK'S OFFICE OF THE CIRCUIT COURT
 FOR THE COUNTY OF YORK THE 4th DAY OF June 1985,
 THIS MAP WAS PRESENTED AND ADMITTED TO RECORD AS
 THE LAW DIRECTS, PLAT BOOK 10, PAGE 120
 EDITH M. ELLIOTT, CLERK
 TESTE: *[Signature]*
 CLERK