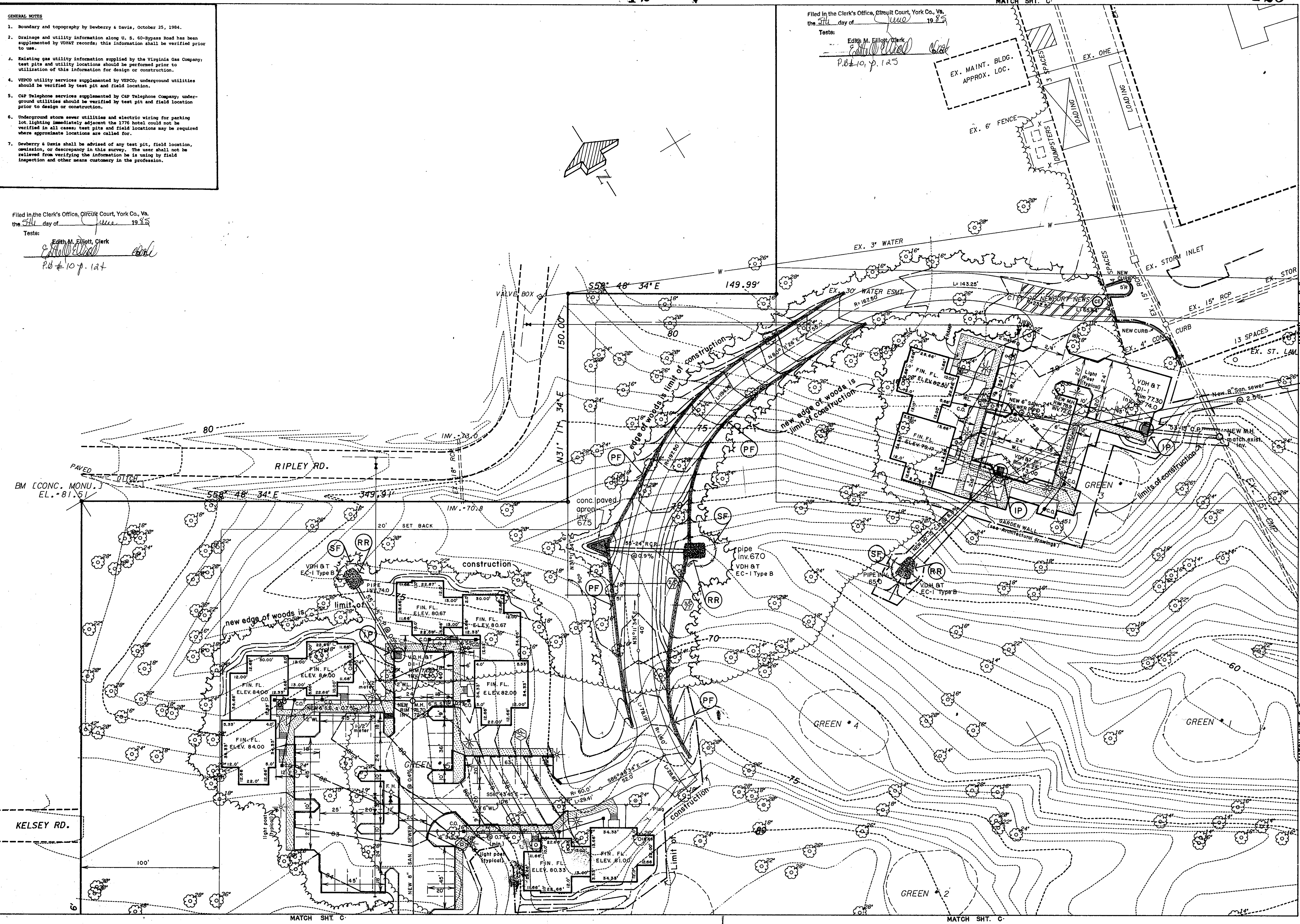


GENERAL NOTES

1. Boundary and topography by Dewberry & Davis, October 25, 1984.
2. Drainage and utility information along U. S. 60-Bypass Road has been supplemented by VDOT records; this information shall be verified prior to use.
3. Existing gas utility information supplied by the Virginia Gas Company; test pits and utility locations should be performed prior to utilization of this information for design or construction.
4. VEPCO utility services supplemented by VEPCO; underground utilities should be verified by test pit and field location.
5. C&P Telephone services supplemented by C&P Telephone Company; underground utilities should be verified by test pit and field location prior to design or construction.
6. Underground storm sewer utilities and electric wiring for parking lot lighting immediately adjacent the 1776 hotel could not be verified in all cases; test pits and field locations may be required where approximate locations are called for.
7. Dewberry & Davis shall be advised of any test pit, field location, omission, or discrepancy in this survey. The user shall not be relieved from verifying the information he is using by field inspection and other means customary in the profession.

Filed in the Clerk's Office, Circuit Court, York Co., Va.
 the 5th day of June 1985
 Tests:
 Edith M. Elliott, Clerk
[Signature]
 P.B. # 10 p. 124

Filed in the Clerk's Office, Circuit Court, York Co., Va.
 the 5th day of June 1985
 Tests:
 Edith M. Elliott, Clerk
[Signature]
 P.B. # 10, p. 125



rk

FILE
 COMM 84-53
 DATE 1-3-85
 DRAWN JJA/660

**RANCORN
 WILDMAN
 KRAUSE**
 AIA

ARCHITECTS
 PLANNERS

166 CARDINAL LANE
 YORK COUNTY VA
 PO BOX NO 1817
 NEWPORT NEWS VA
 804-867-8030

COMMONWEALTH OF VIRGINIA
 J. J. ALFONSO
 Certificate No.
 54-17-3 (a) 1322
 54-17-3 (b) 229
 LAND SURVEYOR

J. J. ALFONSO
 GRADING,
 STAKING, AND
 UTILITY PLAN
 PHASE I

FAIRFIELD WILLIAMSBURG
 YORK COUNTY, VIRGINIA
 SCALE: 1"=30'

DETAIL NO.

 SHEET NO.

C-5
 SHEET
 OF

Exhibit D, to Project and Time Share Instrument For Fairfield Williamsburg