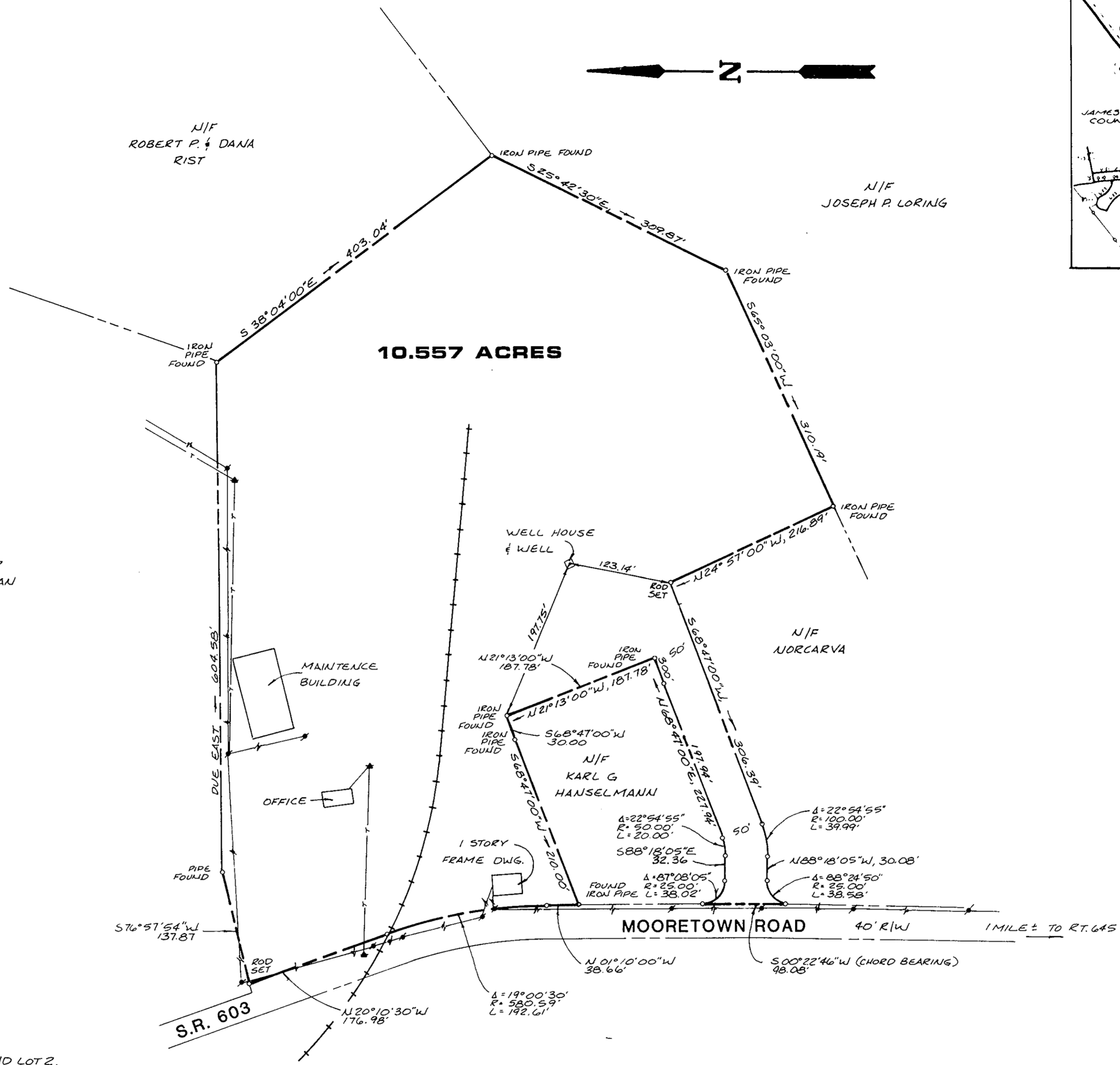


LOCATION MAP



REFERENCE: L.V. WOODSON & ASSOC. PLAT "LOT 1 AND LOT 2, EWELL INDUSTRIAL PARK," DATED MARCH 31, 1963
 M.C. MANUS, MROCK & M.C. MANUS PLAT FOR JOSEPH P. LORING, DATED DEC. 4, 1963.
 SMALL ENGINEERING, INC. DRAWING, "DRIVEWAY IMPROVEMENTS, EWELL INDUSTRIAL PARK," DATED NOV. 1980.

Plat Book No. 10 Page 155
 Filed in the Clerk's Office, Circuit Court, York Co., Va. the 30th day of August 19 85
 Testa:
 Edith M. Elliott, Clerk
Coral Drosschewitz D.C.



AES, a professional corporation
 1761 Jamestown Road, Williamsburg, Va. 23185
 804-253-0040
 Architecture, Engineering, Surveying, Planning

TITLE SURVEY
10.557 ACRES,
MOORETOWN ROAD
 BEING CONVEYED TO GEORGE WASHINGTON VENTURES, A VIRGINIA GENERAL PARTNERSHIP
 YORK COUNTY BRUTON DISTRICT VIRGINIA



No.	DATE	REVISION / COMMENT / NOTE	BY

Designed WLM	Drawn JAS
Scale 1" = 100'	Date AUG. 1985
Project No. 6138	
Drawing No.	