

VICINITY MAP SCALE 1" = 2,000'

THE PLATTING OF THE LAND HEREON SHOWN IS WITH THE FREE CONSENT AND IN ACCORDANCE WITH THE DESIRE OF THE UNDERSIGNED OWNERS, PROPRIETORS, AND TRUSTEES, IF ANY.

ATLANTIC HOMES DEVELOPMENT CORPORATION
KENNETH L. ALLEN - PRESIDENT SVEIN J. LASSEN - SECRETARY

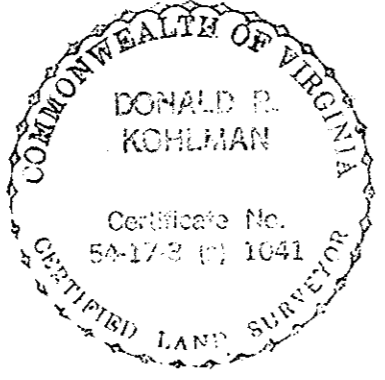
FRANCES BARBER, A NOTARY PUBLIC IN AND FOR THE CITY OF NEWPORT NEWS, DO HEREBY CERTIFY THAT THE ABOVE NAMED PERSONS WHOSE NAMES ARE SIGNED TO THE FOREGOING WRITING HAVE ACKNOWLEDGED THE SAME BEFORE ME IN MY CITY AND STATE AFORESAID. GIVEN UNDER MY HAND THIS 30th DAY OF OCT. 1985.

Francis K. Barber
NOTARY PUBLIC
MY COMMISSION EXPIRES July 25, 1986

TO THE BEST OF MY KNOWLEDGE AND BELIEF, ALL THE REQUIREMENTS AS SET FORTH IN THE ORDINANCE FOR APPROVING PLATS OF SUBDIVISION IN THE COUNTY OF YORK, VIRGINIA, HAVE BEEN COMPLIED WITH INCLUDING A CLOSURE OF NOT LESS THAN 1/10,000.

THIS IS TO CERTIFY THAT THE LAND EMBRACED IN THIS SUBDIVISION IS IN THE NAME OF ATLANTIC HOMES DEVELOPMENT CORPORATION, A VIRGINIA CORPORATION, AND WAS ACQUIRED FROM BANK OF VIRGINIA TRUST COMPANY, TRUSTEE, BY DEED DATED AUGUST 23, 1983 AND DULY RECORDED IN THE CLERK'S OFFICE OF THE CIRCUIT COURT OF THE COUNTY OF YORK, VIRGINIA, IN DEED BOOK 383, PAGE 692. I CERTIFY THAT MONUMENTS AS SHOWN ON THE PLAT WILL BE SET ON OR BEFORE OCTOBER 31, 1986.

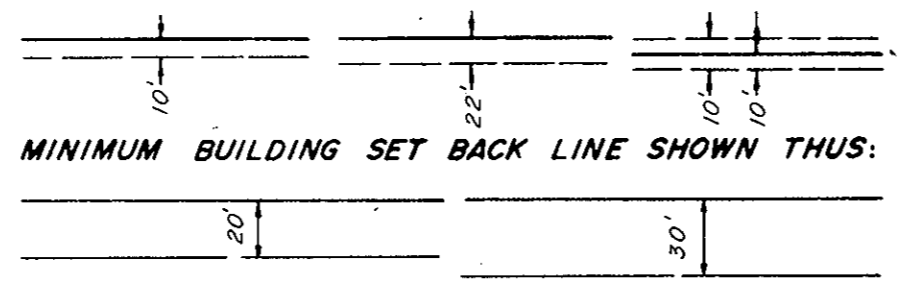
Donald R. Kohlman
DONALD R. KOHLMAN
CERTIFIED LAND SURVEYOR



NO.	DELTA	RADIUS	TAN	ARC	CHORD	CHD. BEARING
1	87°06'07"	25.00'	23.77'	38.01'	34.45'	S76°45'22"E
2	26°52'04"	550.00'	131.37'	257.91'	255.56'	N46°15'32"E
3	04°10'16"	779.72'	28.39'	56.76'	56.75'	N34°54'45"E
4	97°42'19"	25.00'	28.61'	42.63'	37.65'	N16°01'41"W
5	82°17'40"	25.00'	21.85'	35.91'	32.90'	S73°58'20"W
6	20°00'00"	563.91'	99.43'	196.84'	195.84'	N42°49'30"E
7	12°43'28"	525.00'	58.54'	116.59'	116.35'	N46°27'46"E
8	148°05'06"	90.00'	314.75'	232.61'	173.06'	N57°14'38"E
9	108°14'19"	175.00'	241.93'	330.60'	283.58'	N77°10'02"E
10	35°20'40"	175.00'	55.76'	107.95'	106.25'	N40°43'12"E
11	30°52'47"	565.00'	156.05'	304.51'	300.84'	N42°57'09"E
12	122°09'20"	75.00'	135.74'	159.90'	131.29'	N88°35'25"E
13	54°57'23"	175.00'	91.01'	167.85'	161.49'	S57°48'36"E
14	142°15'28"	50.00'	146.28'	124.14'	94.63'	S23°34'59"W
15	139°07'38"	195.00'	523.32'	473.50'	365.45'	S62°53'26"W
16	83°42'36"	135.00'	120.94'	197.24'	180.16'	S35°10'55"W
17	60°11'49"	175.00'	101.44'	183.86'	175.52'	S46°56'19"W
18	98°16'44"	165.00'	190.75'	283.02'	249.58'	S65°58'47"W
19	77°16'10"	110.00'	87.92'	148.35'	137.36'	N26°14'45"W
20	29°11'15"	175.00'	45.56'	89.15'	88.19'	N02°12'17"W
21	42°53'43"	135.00'	53.04'	101.07'	98.73'	S14°46'28"W
22	97°54'06"	90.00'	103.35'	153.78'	135.75'	N82°20'08"E
23	04°43'20"	1175.00'	48.45'	96.84'	96.82'	S48°08'06"W
24	05°35'30"	1225.00'	59.82'	119.55'	119.51'	S48°34'11"W
25	90°00'00"	25.00'	25.00'	39.27'	35.36'	S00°46'26"W
26	90°00'00"	25.00'	25.00'	39.27'	35.36'	N89°13'34"W
27	38°30'00"	175.00'	61.11'	117.59'	115.39'	S63°28'34"E
28	38°30'00"	225.00'	78.57'	151.19'	148.36'	N63°28'34"W
29	50°00'00"	275.00'	128.24'	239.98'	232.44'	N57°43'34"W
30	50°00'00"	325.00'	151.55'	283.62'	274.70'	S57°43'34"E
31	53°58'05"	25.00'	12.73'	23.55'	22.69'	N05°44'31"W
32	53°58'05"	25.00'	12.73'	23.55'	22.69'	S59°42'36"E
33	287°56'10"	60.00'	—	301.53'	—	—
34	18°47'11"	375.00'	62.04'	122.96'	122.41'	S55°10'02"W
35	36°11'51"	375.00'	122.56'	236.91'	232.99'	N82°58'46"W
36	69°20'43"	325.00'	224.81'	393.35'	369.78'	N80°26'48"E
37	82°49'16"	25.00'	22.05'	36.14'	33.07'	N59°40'10"W
38	82°49'09"	25.00'	22.05'	36.14'	33.07'	S23°09'03"W
39	47°32'13"	172.38'	75.91'	143.02'	138.95'	S42°01'39"E
40	47°32'13"	222.38'	97.93'	184.50'	179.25'	N42°01'39"W
41	72°53'43"	25.00'	18.46'	31.81'	29.70'	N77°45'23"E
42	28°04'21"	25.00'	6.25'	12.25'	12.13'	N51°45'35"W
43	280°58'04"	60.00'	—	294.23'	—	—

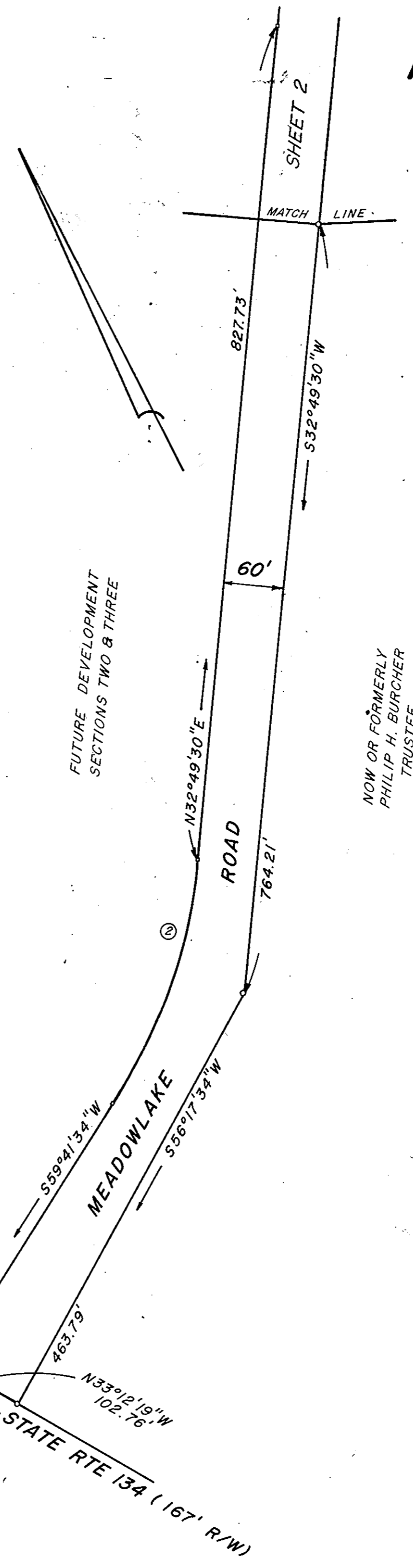
AREA WITHIN LOTS	12.2637 ACRES
AREA WITHIN R/W	5.0830 ACRES
COMMON AREA	7.5613 ACRES
TOTAL AREA	24.9080 ACRES

EASEMENTS SHOWN THIS ARE HEREBY CONVEYED TO THE COUNTY OF YORK FOR DRAINAGE & OTHER UTILITIES.



EACH LOT WITHIN THIS SUBDIVISION IS SERVED BY PUBLIC SEWER PROVIDED BY THE COUNTY OF YORK, VIRGINIA.

EACH LOT WITHIN THIS SUBDIVISION IS SERVED BY PUBLIC WATER PROVIDED BY THE CITY OF NEWPORT NEWS.



MEADOWLAKE FARMS

SECTION ONE

COUNTY OF YORK

VIRGINIA

COENEN & ASSOCIATES, INC.
ENGINEERS — PLANNERS — SURVEYORS
696 J. CLYDE MORRIS BLVD. — NEWPORT NEWS, VA.
SCALE: 1" = 100' DATE: OCTOBER 31, 1985

SHEET 1 OF 2

THE PROPERTY SHOWN ON THIS PLAT IS SUBJECT TO THE PROVISIONS OF THAT CERTAIN DECLARATION OF COVENANTS, CONDITIONS AND RESTRICTIONS DATED, SEPTEMBER 21, 1985 TO BE RECORDED IN THE CLERK'S OFFICE OF THE CIRCUIT COURT FOR THE COUNTY OF YORK, VIRGINIA CONTEMPORANEOUSLY HEREWITH. ATLANTIC HOMES DEVELOPMENT CORPORATION IN RECORDING THIS PLAT OF SUBDIVISION OF MEADOWLAKE FARMS SECTION ONE HAS DESIGNATED CERTAIN AREAS IN SAID DECLARATION AS "COMMON AREA" INTENDED FOR USE BY OWNERS IN MEADOWLAKE FARMS SECTION ONE FOR USES AS SET FORTH IN SAID DECLARATION OF COVENANTS, RESTRICTIONS AND CONDITIONS. THE SAID AREAS ARE NOT HEREBY DESIGNATED FOR USE TO THE GENERAL PUBLIC, BUT FOR THE COMMON USE AND ENJOYMENT OF SAID HOMEOWNERS, AS MORE FULLY PROVIDED IN SAID RESTRICTIONS.

APPROVED:
YORK COUNTY BOARD OF SUPERVISORS
BY Richard
PLAT APPROVING AGENT
DATE January 6, 1986

STATE OF VIRGINIA
COUNTY OF YORK
IN THE CLERK'S OFFICE OF THE CIRCUIT COURT
FOR THE COUNTY OF YORK THE 7 DAY OF Jan 1986
THIS MAP WAS PRESENTED AND ADMITTED TO RECORD
AS THE LAW DIRECTS, PLAT BOOK 10, PAGE 199

EDITH M. ELLIOTT, CLERK
TESTE: Cook CLERK