

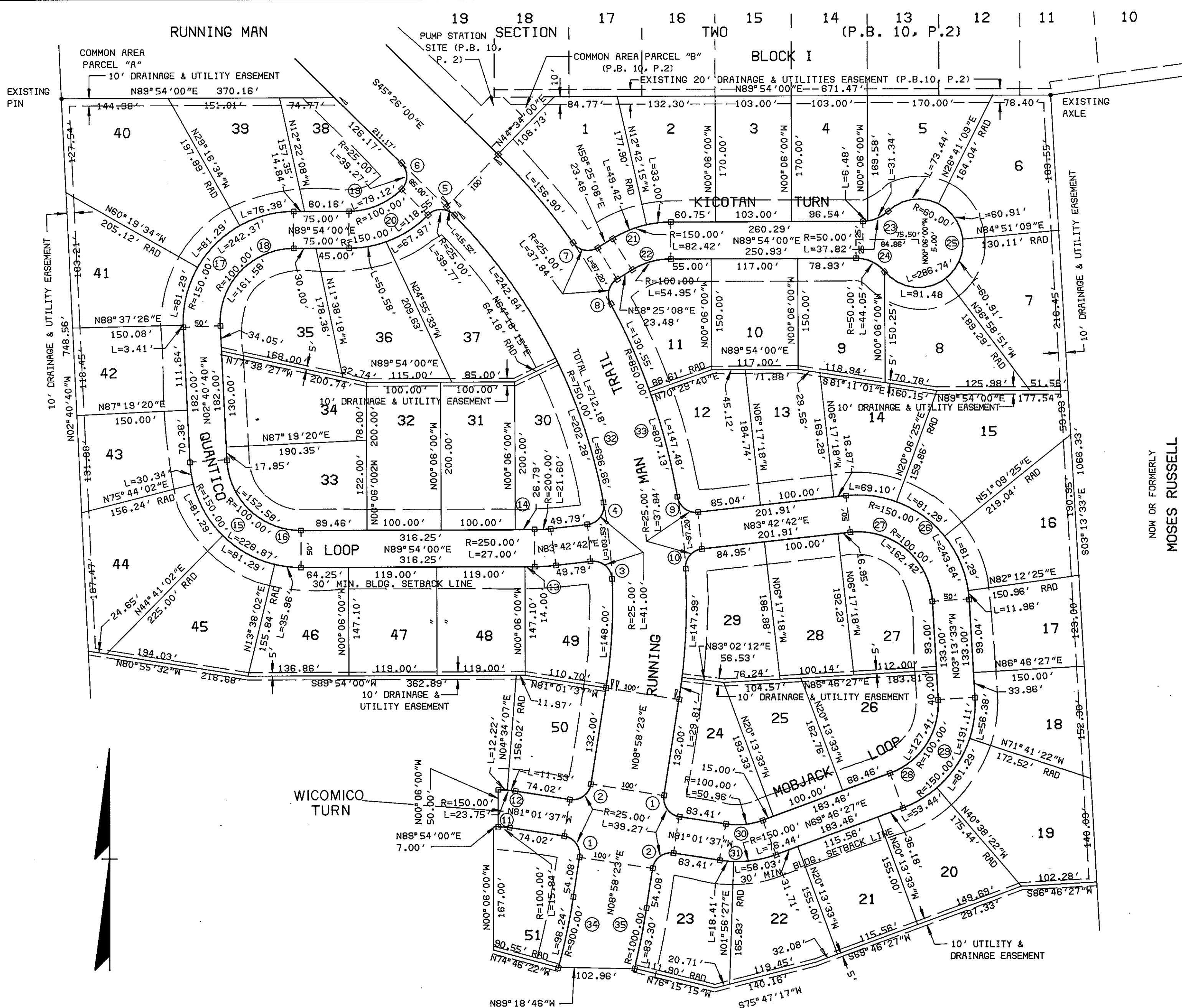
CURVE DATA

NO	RADIUS	DELTA	TANGENT	LENGTH	CHORD	CHORD BEARING
1	25.00'	90°00'00"	25.00'	39.27'	35.36'	S36°01'37"E
2	25.00'	90°00'00"	25.00'	39.27'	35.36'	S53°58'23"W
3	25.00'	93°57'16"	26.79'	41.00'	36.55'	S49°18'39"E
4	25.00'	93°57'16"	26.79'	41.00'	36.55'	N36°44'04"E
5	25.00'	91°08'05"	25.50'	39.77'	35.70'	S89°48'55"E
6	25.00'	90°00'00"	25.00'	39.27'	35.36'	S00°26'00"E
7	25.00'	86°43'27"	23.61'	37.84'	34.33'	N78°13'09"W
8	25.00'	86°43'27"	23.61'	37.84'	34.33'	N15°03'24"E
9	25.00'	86°43'27"	23.61'	37.84'	34.33'	S52°55'34"E
10	25.00'	86°43'27"	23.61'	37.84'	34.33'	N40°20'59"E
11	100.00'	09°04'23"	7.93'	15.84'	15.82'	S85°33'49"E
12	150.00'	09°04'23"	11.90'	23.75'	23.73'	S85°33'49"E
13	250.00'	06°11'18"	13.51'	27.00'	26.99'	N86°48'21"E
14	200.00'	06°11'18"	10.81'	21.60'	21.59'	N86°48'21"E
15	150.00'	87°25'20"	143.40'	228.87'	207.31'	S46°23'20"E
16	100.00'	87°25'20"	95.60'	152.58'	138.20'	S46°23'20"E
17	150.00'	92°34'40"	156.91'	247.37'	216.85'	S43°36'40"W
18	100.00'	92°34'40"	104.60'	161.58'	144.57'	S43°36'40"W
19	100.00'	45°20'00"	41.76'	79.12'	77.07'	S67°14'00"W
20	150.00'	45°16'57"	62.57'	118.55'	115.49'	N67°15'31"E
21	150.00'	31°28'52"	42.28'	82.42'	81.38'	S74°09'34"W
22	100.00'	31°28'52"	28.19'	54.95'	54.26'	N74°09'34"E
23	50.00'	43°20'30"	19.87'	37.82'	36.93'	S68°13'45"W
24	50.00'	50°28'44"	23.57'	44.05'	42.64'	S64°51'38"E
25	60.00'	273°49'14"	-	286.74'	-	-
26	150.00'	93°03'44"	158.24'	243.64'	217.72'	S49°45'26"E
27	100.00'	93°03'44"	105.49'	162.42'	145.15'	S49°45'26"E
28	100.00'	73°00'00"	74.00'	127.41'	118.96'	S33°16'27"W
29	150.00'	73°00'00"	110.99'	191.11'	178.45'	N33°16'27"E
30	100.00'	29°11'56"	26.05'	50.96'	50.41'	S84°22'25"W
31	150.00'	29°11'56"	39.07'	76.44'	75.62'	N84°22'25"E
32	750.00'	54°24'22"	385.50'	712.18'	685.72'	S18°13'49"E
33	850.00'	54°24'22"	436.90'	807.13'	777.15'	N18°13'49"W
34	900.00'	06°15'15"	49.17'	98.24'	98.19'	N12°08'01"E
35	1000.00'	04°46'22"	41.67'	83.30'	83.28'	N11°21'34"E

LOT AREAS

LOT	AREA (SQ.FT.)	LOT	AREA (SQ.FT.)
1	26,285	27	20,456
2	19,301	28	18,955
3	17,510	29	21,270
4	17,509	30	20,987
5	19,821	31	20,000
6	23,449	32	20,000
7	23,876	33	20,165
8	20,134	34	20,017
9	18,495	35	20,628
10	17,550	36	22,233
11	18,959	37	29,902
12	21,395	38	18,276
13	17,866	39	19,740
14	19,312	40	34,962
15	28,705	41	21,385
16	22,546	42	17,513
17	17,553	43	17,507
18	18,625	44	25,782
19	28,136	45	23,482
20	18,911	46	17,541
21	17,912	47	17,505
22	18,738	48	17,505
23	19,564	49	18,471
24	19,815	50	18,166
25	17,804	51	18,354
26	21,040		

NOM OR FORMERLY
E.A. & T.R. SINCLAIR
 (D.B. 36, P.20)
 (D.B. 20, P.124-129)



NOM OR FORMERLY
MOSES RUSSELL
 (D.B. 35, P.537)

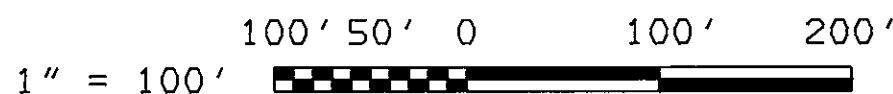
SEE SHEET 1 FOR NOTES AND CERTIFICATES

STATE OF VIRGINIA
 COUNTY OF YORK
 IN THE CLERK'S OFFICE OF THE CIRCUIT COURT FOR THE COUNTY OF YORK THE 23rd DAY OF January 1986, THIS MAP WAS PRESENTED, AND ADMITTED TO RECORD AS THE LAW DIRECTS IN PLAT BOOK 10, PAGE 207

TESTE: EDITH M. ELLIOTT, CLERK
 CLERK

BY: Attn: [Signature]

NOM OR FORMERLY
RUNNING MAN LIMITED PARTNERSHIP
 (D.B. 226, P.272)



SUBDIVISION
 OF
RUNNING MAN
 SECTION THREE-A
 BETHEL MAGISTERIAL DISTRICT
 YORK COUNTY, VIRGINIA
 SCALE: 1"=100'
 FEBRUARY 1, 1985
BALDWIN AND GREGG, LTD.
 ENGINEERS - SURVEYORS - PLANNERS
 NORFOLK, VIRGINIA