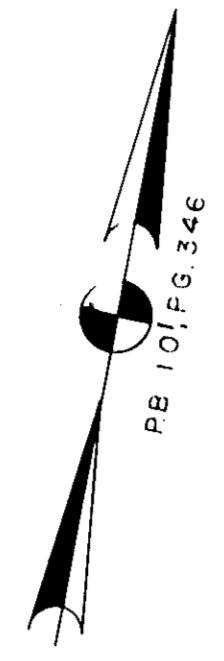


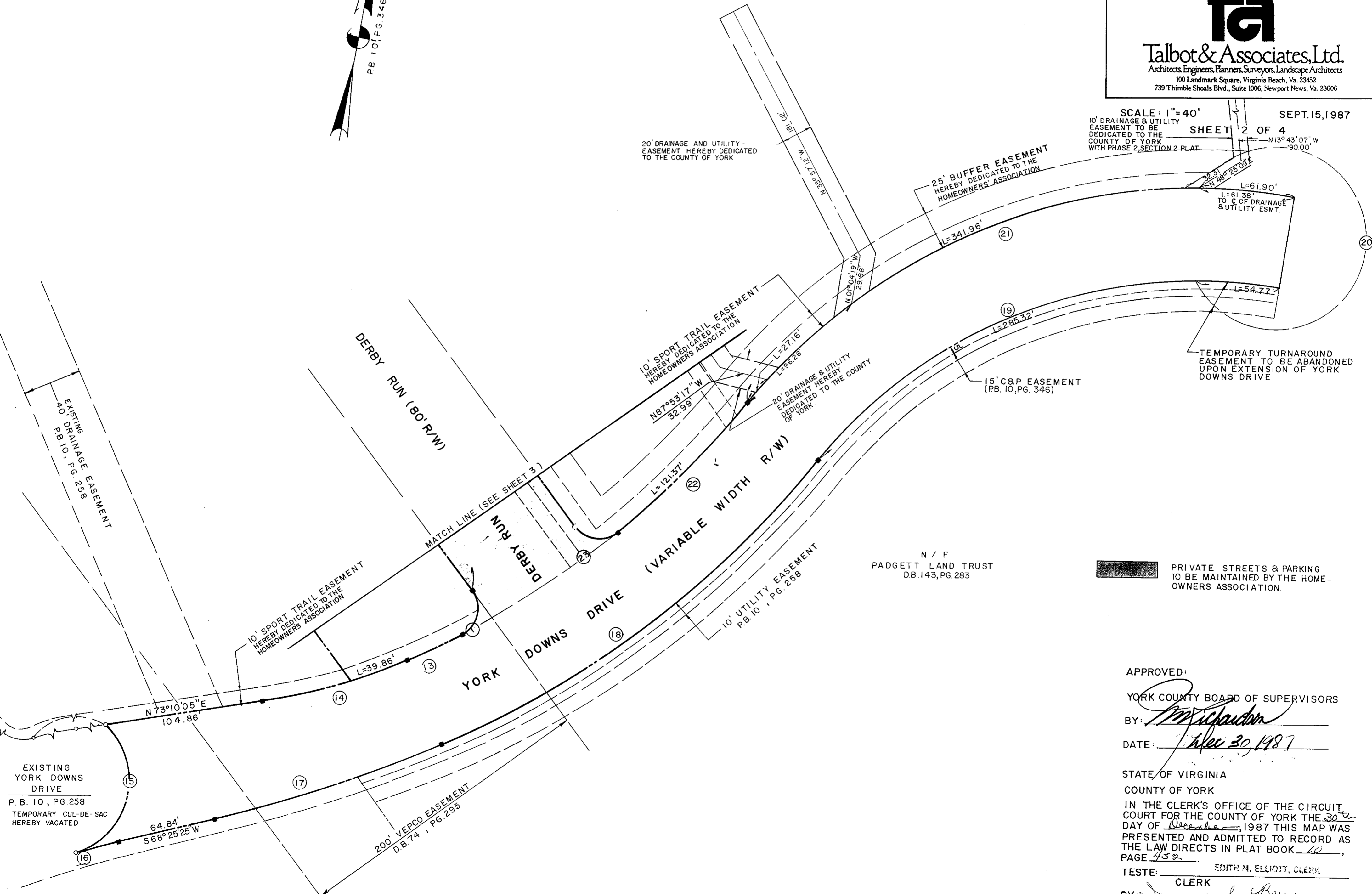
YORKSHIRE DOWNS  
PHASE 2, SECTION I  
COUNTY OF YORK, VIRGINIA



**Talbot & Associates, Ltd.**  
Architects, Engineers, Planners, Surveyors, Landscape Architects  
100 Landmark Square, Virginia Beach, Va. 23452  
739 Thimble Shoals Blvd., Suite 1006, Newport News, Va. 23606



SCALE: 1" = 40'  
10' DRAINAGE & UTILITY EASEMENT TO BE DEDICATED TO THE COUNTY OF YORK WITH PHASE 2, SECTION 2 PLAT  
SEPT. 15, 1987  
SHEET 2 OF 4  
N 13° 43' 07" W  
190.00'



20' DRAINAGE AND UTILITY EASEMENT HEREBY DEDICATED TO THE COUNTY OF YORK

25' BUFFER EASEMENT HEREBY DEDICATED TO THE HOMEOWNERS' ASSOCIATION

10' SPORT TRAIL EASEMENT HEREBY DEDICATED TO THE HOMEOWNERS' ASSOCIATION

20' DRAINAGE & UTILITY EASEMENT HEREBY DEDICATED TO THE COUNTY OF YORK

15' C&P EASEMENT (PB. 10, PG. 346)

TEMPORARY TURNAROUND EASEMENT TO BE ABANDONED UPON EXTENSION OF YORK DOWNS DRIVE

10' SPORT TRAIL EASEMENT HEREBY DEDICATED TO THE HOMEOWNERS' ASSOCIATION

N / F  
PADGETT LAND TRUST  
DB. 143, PG. 283

PRIVATE STREETS & PARKING TO BE MAINTAINED BY THE HOMEOWNERS ASSOCIATION.

EXISTING YORK DOWNS DRIVE  
P. B. 10, PG. 258  
TEMPORARY CUL-DE-SAC HEREBY VACATED

200' VEPCO EASEMENT  
D.B. 74, PG. 295

APPROVED:  
YORK COUNTY BOARD OF SUPERVISORS  
BY: *[Signature]*  
DATE: *Dec 30, 1987*  
STATE OF VIRGINIA  
COUNTY OF YORK  
IN THE CLERK'S OFFICE OF THE CIRCUIT COURT FOR THE COUNTY OF YORK THE 30<sup>th</sup> DAY OF December, 1987 THIS MAP WAS PRESENTED AND ADMITTED TO RECORD AS THE LAW DIRECTS IN PLAT BOOK 10, PAGE 452.  
TESTE: EDITH M. ELLIOTT, CLERK  
BY: *[Signature]* CLERK