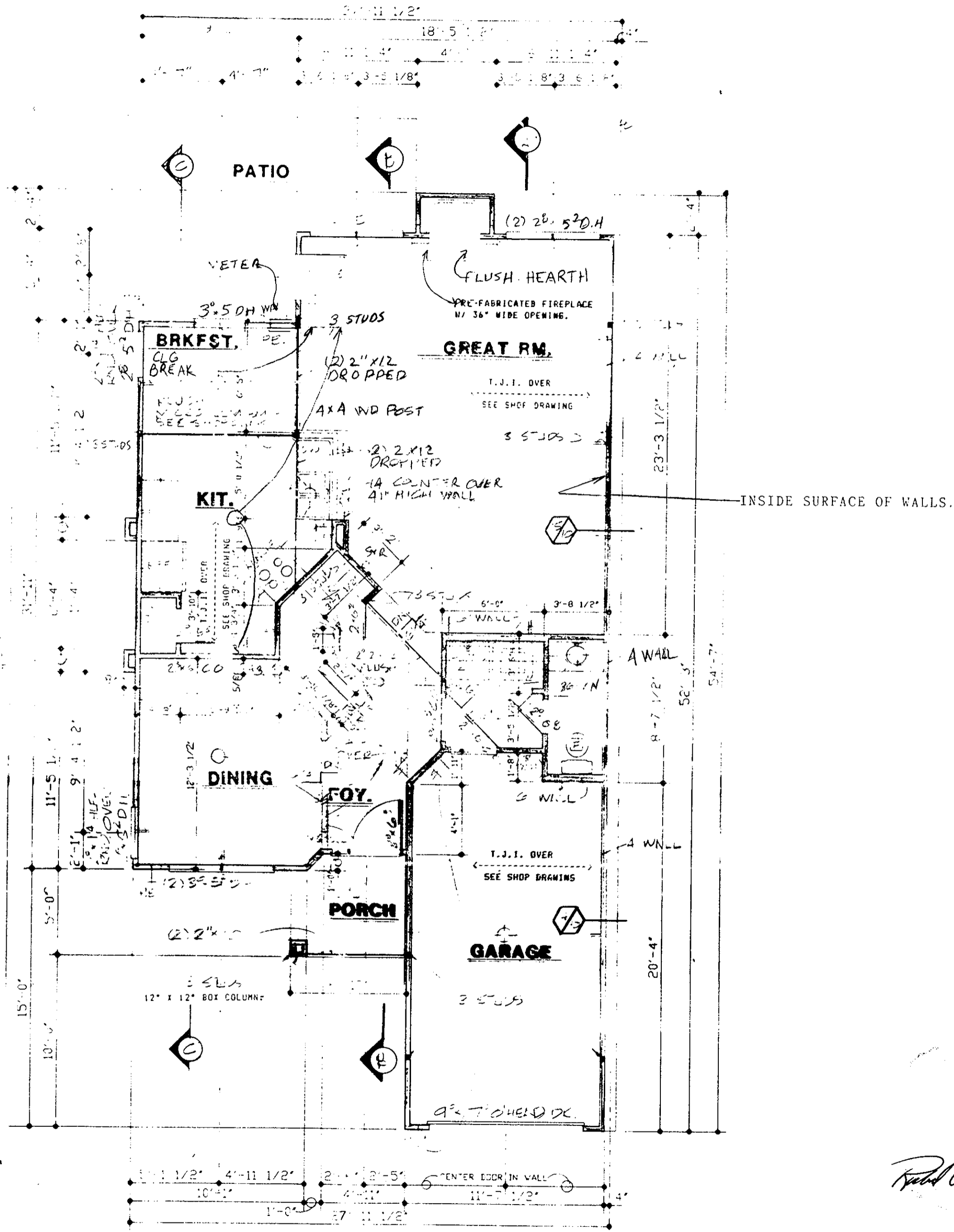


NOTE: PATIOS & PORCHES ARE L.C.E.'s



TOWNHOUSE UNIT TYPE ②

Richard A. Heimbach

THESE PLANS ARE HEREBY CERTIFIED AS TO THEIR ACCURACY AND COMPLIANCE WITH THE PROVISIONS OF SECTION 55-79.58(b) OF THE CODE OF VIRGINIA, AS AMENDED, AND THAT ALL UNITS DEPICTED HEREON ARE SUBSTANTIALLY COMPLETED.

Richard A. Heimbach 006311
ARCHITECT

Filed in the Clerk's Office, Circuit Court, York Co., Va.
the 18th day of February 1988

Teste: *Edith M. Elliott, Clerk*
D.C.

PB 10 P 477

PHASE III
BUILDING 2
UNITS 401-403-405
407-409-411

CONDOMINIUM PLANS

BURNT BRIDGE RUN CONDOMINIUM

DRAWN BY:
DATE 10-08-87

FEB 17 1988

ARTROSS
design group

401 CLEVELAND PLACE SUITE 104
VIRGINIA BEACH, VIRGINIA 23462

804-499-599