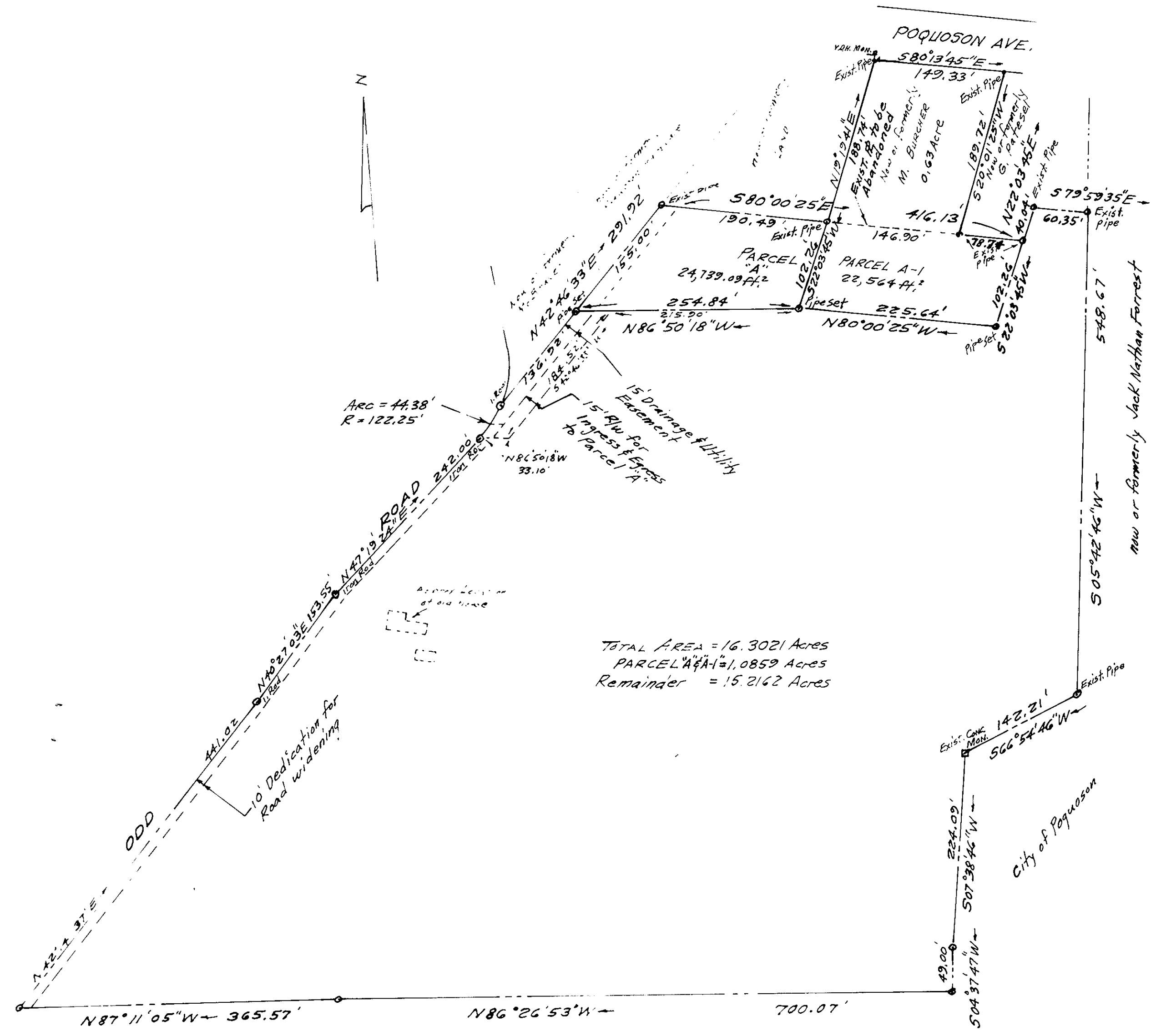


VICINITY SKETCH
1" = 1,000'



TOTAL AREA = 16.3021 Acres
PARCEL A & A-1 = 1.0859 Acres
Remainder = 15.2162 Acres

City of Poquoson School Board - High School Tract

NOTE:

- (1) This survey includes the following:
F.A. Carmines Partnership Tract; Glenn Phillips Moore Tract and The City of Poquoson Tract (Phillips)
- (2) All magnetic bearings shown on this survey are referenced to the meridian of the F.A. Carmines Partnership Tract, made by E.J. Keller, C.S. 5-28-87

CITY OF POQUOSON
APPROVED
DATE 2-22-88
Phillips
CITY MANAGER

Plat Book No. 10 Page 485

Filed in the Clerk's Office, Circuit Court, York Co., Va.
the 24th day of February 1988

Edith M. Elliott, Clerk
Edith M. Elliott D.C.



PLAT OF THE PROPERTY OF THE
CITY OF POQUOSON
CITY OF POQUOSON, VIRGINIA

John W. Lawson
JOHN W. LAWSON: CERTIFIED LAND SURVEYOR
SCALE: 1"=100' SEPT. 5, 1987