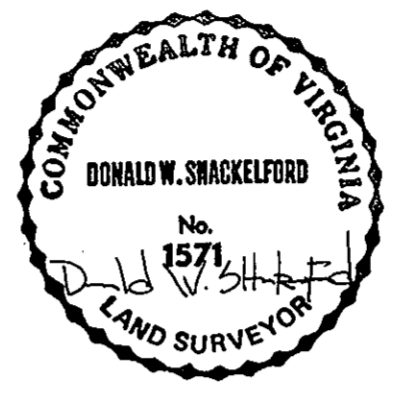
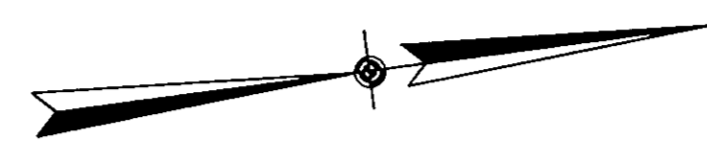
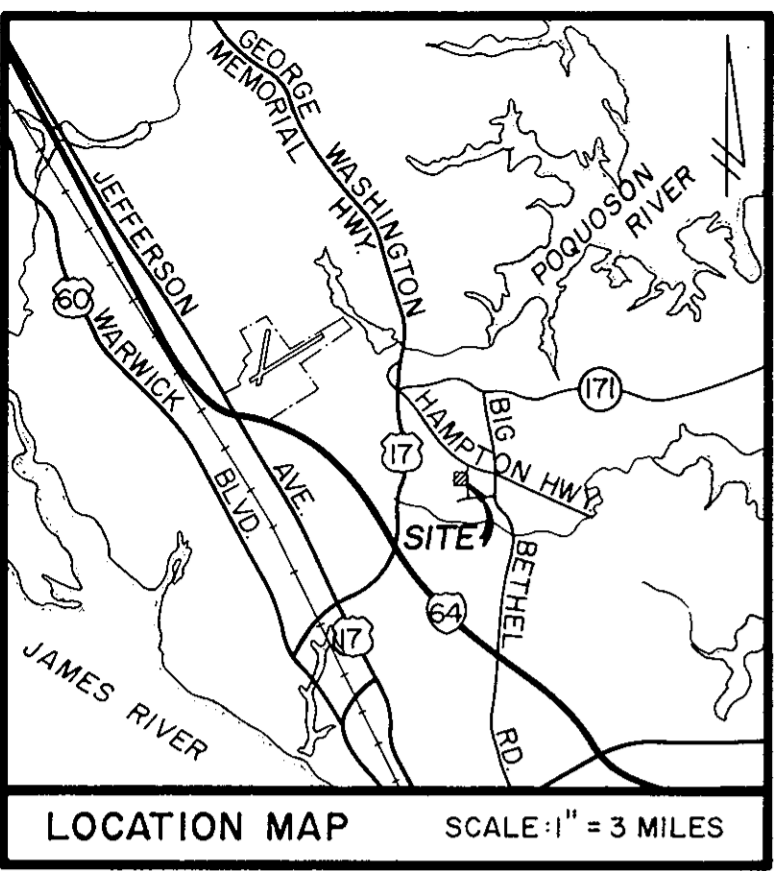
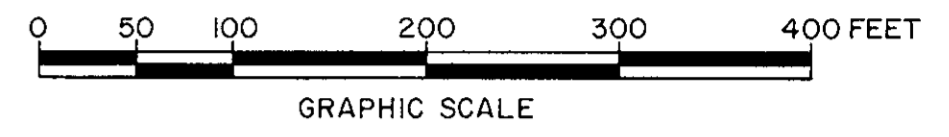


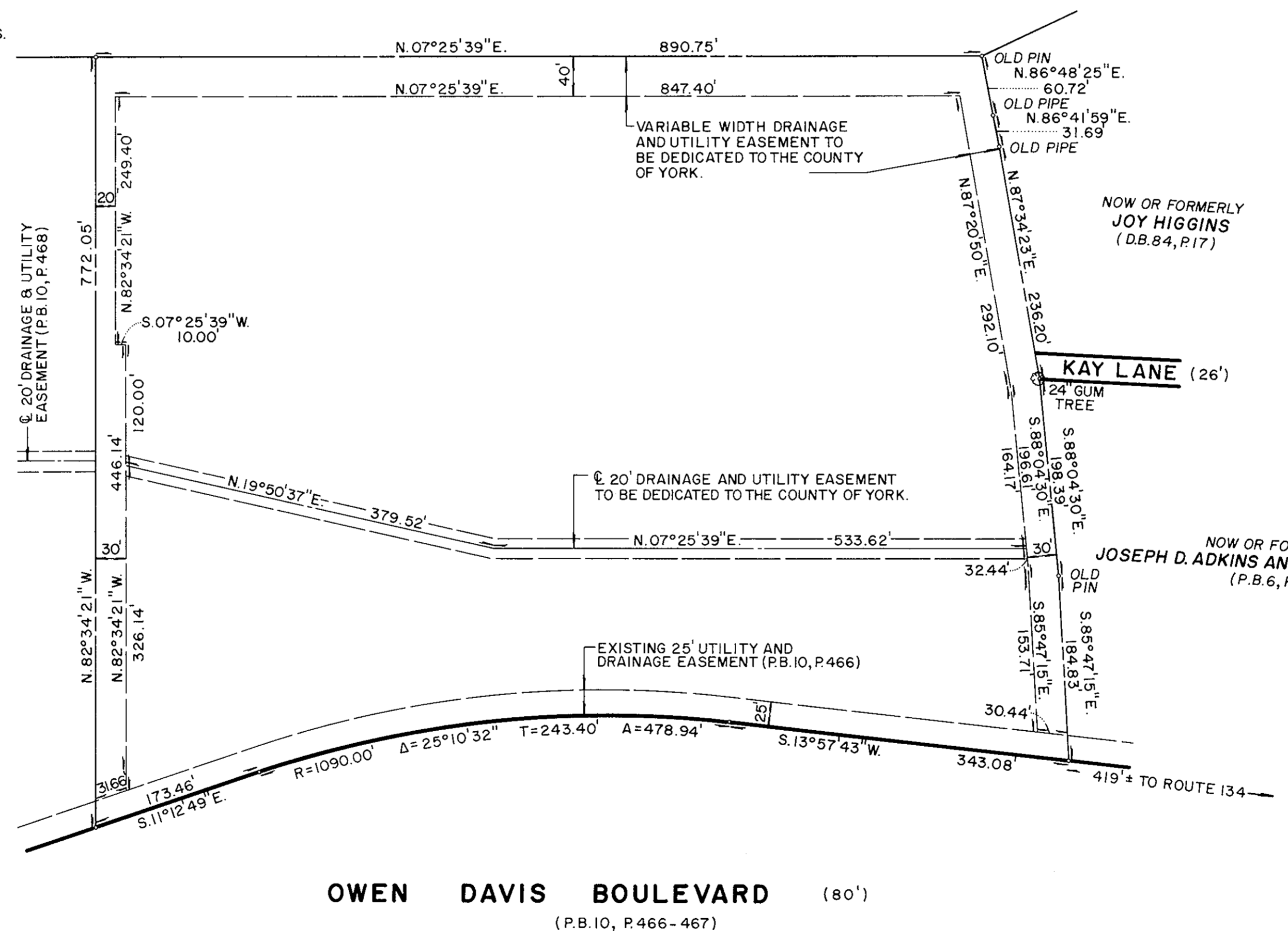
PLAT SHOWING
DRAINAGE AND UTILITY EASEMENT
 TO BE DEDICATED TO
COUNTY OF YORK
 BY
YORK COUNTY SCHOOL BOARD
 COUNTY OF YORK, VIRGINIA
 SCALE: 1" = 100' JUNE, 1988
JOHN E. SIRINE AND ASSOCIATES, LTD.
 SURVEYORS · ENGINEERS · PLANNERS
 4317 BONNEY ROAD
 VIRGINIA BEACH, VIRGINIA 23452



NOW OR FORMERLY
GEORGE L. SMITH
 (D.B. 299, P. 180) (D.B. 295, P. 634)

- NOTES:
1. AREA OF EASEMENTS TO BE DEDICATED = 92,034 SQ.FT./ 2.113 ACRES.
 2. EASEMENTS TO BE DEDICATED BY DEED.
 3. MERIDIAN SOURCE BASED ON PLAT RECORDED IN PLAT BOOK 10, AT PAGE 468.
 4. THIS PLAT DOES NOT REPRESENT A BOUNDARY SURVEY.

COVENTRY PLANNED DEVELOPMENT



Plat Book No. 10 Page 564
 Filed in the Clerk's Office, Circuit Court, York Co., Va.
 the 3rd day of August 1988
 Teste: Edith M. Elliott, Clerk 3:45 P.M.
Carol D. ... D.C.