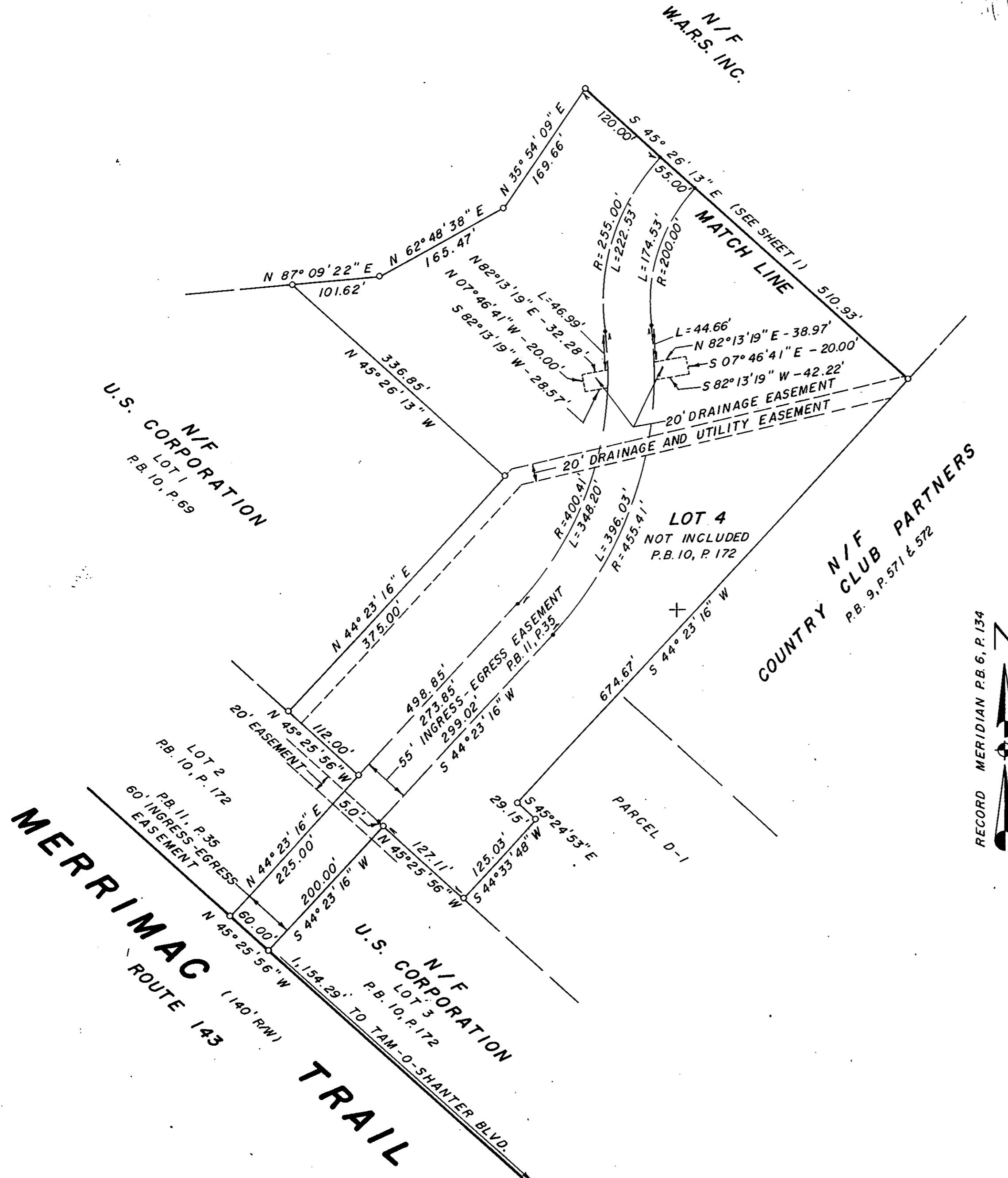
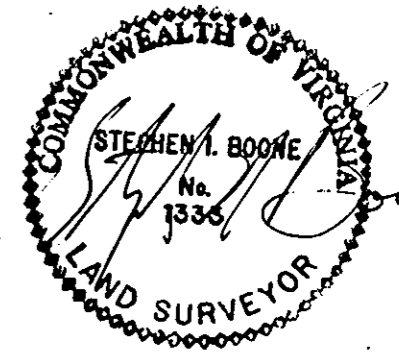


SUBDIVISION OF THE PROPERTY OF
W.A.R.S. INC.
COUNTY OF YORK, VIRGINIA

STEPHEN I. BOONE & ASSOCIATES, P.C.
LAND SURVEYORS
PORTSMOUTH, VIRGINIA

SCALE: 1" = 100'
SHEET 2 OF 2

DATE: DECEMBER 20, 1988



Filed in the Clerk's Office, Circuit Court, York Co., Va.
the 16th day of March 1989
J. S. Sampson D.C.