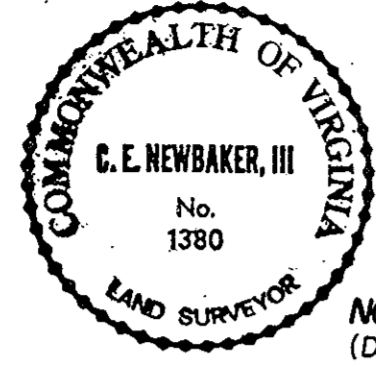


THE UNDERSIGNED CERTIFIES THAT THIS PLAT IS ACCURATE AND COMPLIES WITH THE PROVISIONS OF THE CODE OF VIRGINIA SECTION 55-79.58 (a) AND ALL UNITS DEPICTED HEREON HAVE BEEN SUBSTANTIALLY COMPLETED.

SIGNED: C. E. Newbaker III DATE: 10-30-89
 C. E. NEWBAKER III, L.S.



NOTES:
 I. ALL BUILDING DIMENSIONS SHOWN HEREON ARE EXTERIOR DIMENSIONS AND ARE IN FEET
 PARCEL B = 17.630 ACRES

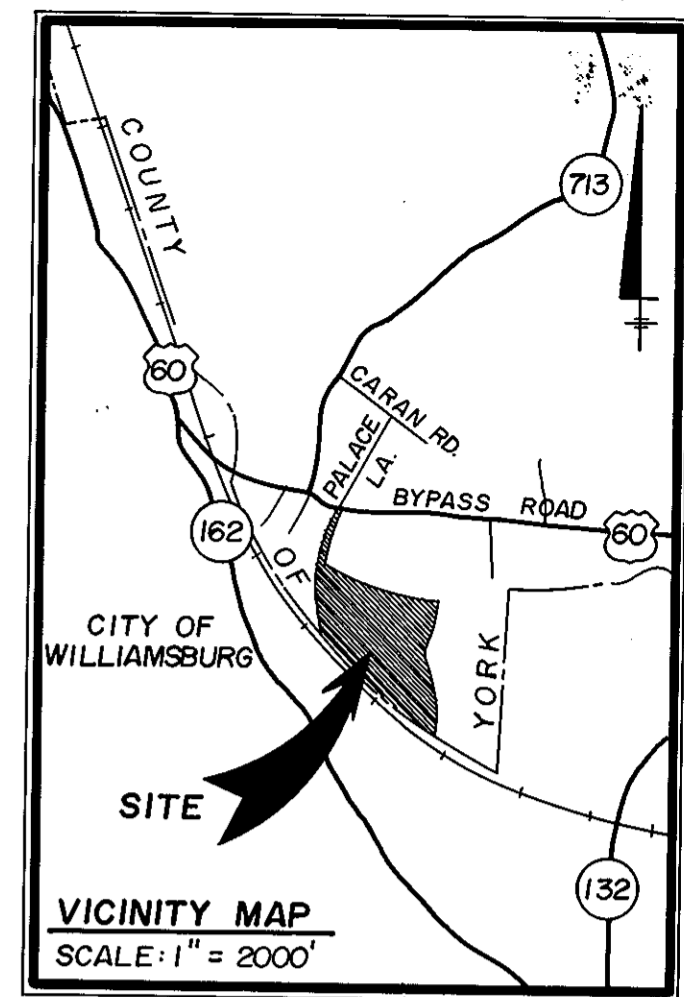
YORK COUNTY
 APPROVED FOR RECORDATION
 BY: S. Mark Carter
 TITLE: Director of Community Dev.
 DATE: October 30, 1989

STATE OF VIRGINIA
 COUNTY OF YORK

IN THE CLERK'S OFFICE OF THE CIRCUIT COURT FOR THE COUNTY OF YORK THE 15 DAY OF November, 1989 THIS MAP WAS PRESENTED AND ADMITTED TO RECORD AS THE LAW DIRECTS IN PLAT BOOK 11, PAGE 120 10:15 A.M.

TESTE: NANCY B. KANE, CLERK
 CLERK

BY: Ronald K. Watkins, Jr.



CURVE DATA TABLE				
NO.	RADIUS	DELTA	TANGENT	ARC
1	5565.65'	04° 31' 35"	219.96'	439.69'
2	1067.62'	12° 33' 39"	117.50'	234.05'
3	583.76'	34° 45' 06"	182.67'	354.07'
4	683.76'	18° 06' 16"	108.94'	216.06'
5	683.76'	16° 38' 48"	100.03'	198.67'
6	1167.62'	12° 33' 39"	128.50'	255.97'
7	5665.65'	04° 38' 30"	229.62'	459.00'
8	5665.65'	04° 53' 06"	241.67'	483.04'
9	583.76'	22° 51' 55"	118.05'	232.97'
10	583.76'	11° 53' 11"	60.77'	121.11'
11	1067.62'	05° 32' 25"	51.66'	103.23'
12	1067.62'	07° 01' 14"	65.49'	130.82'
13	5665.65'	00° 55' 36"	45.00'	90.00'

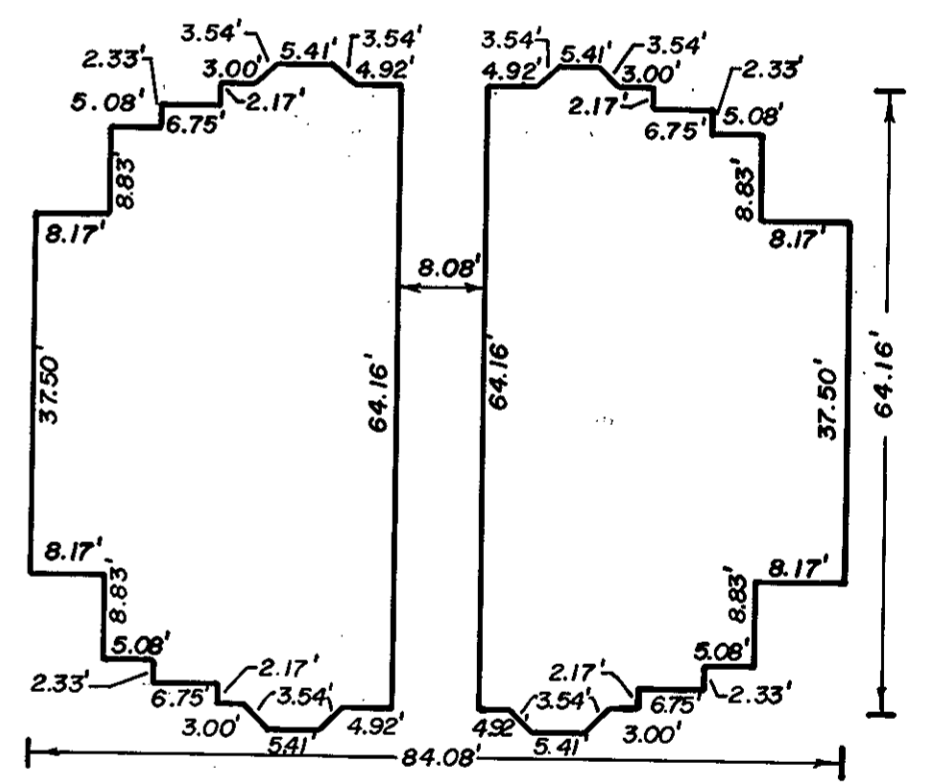
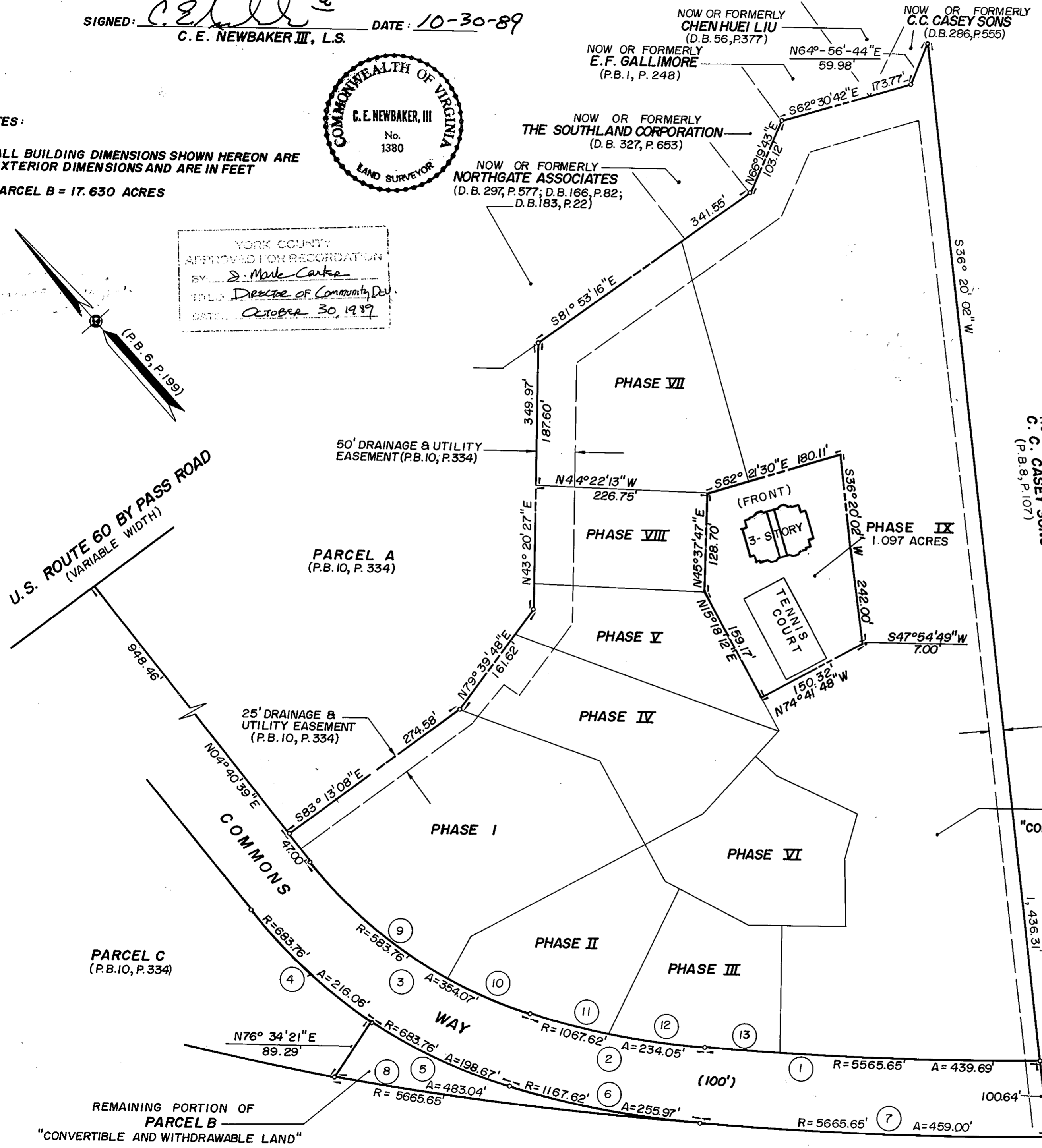


EXHIBIT J
 PHASE IX
 SHEET 1 OF 5
 PLAT OF
WILLIAMSBURG COMMONS CONDOMINIUMS
 FOR
WILLIAMSBURG COMMONS, INC.
 A VIRGINIA CORPORATION
 BRUTON DISTRICT COUNTY OF YORK, VIRGINIA
 SCALE: 1" = 100'
 February, 1989



THE SIRINE GROUP, LTD.
 SURVEYORS • ENGINEERS • PLANNERS
 P.O. BOX 450, ROUTE 17
 WHITE MARSH, VIRGINIA
 23183