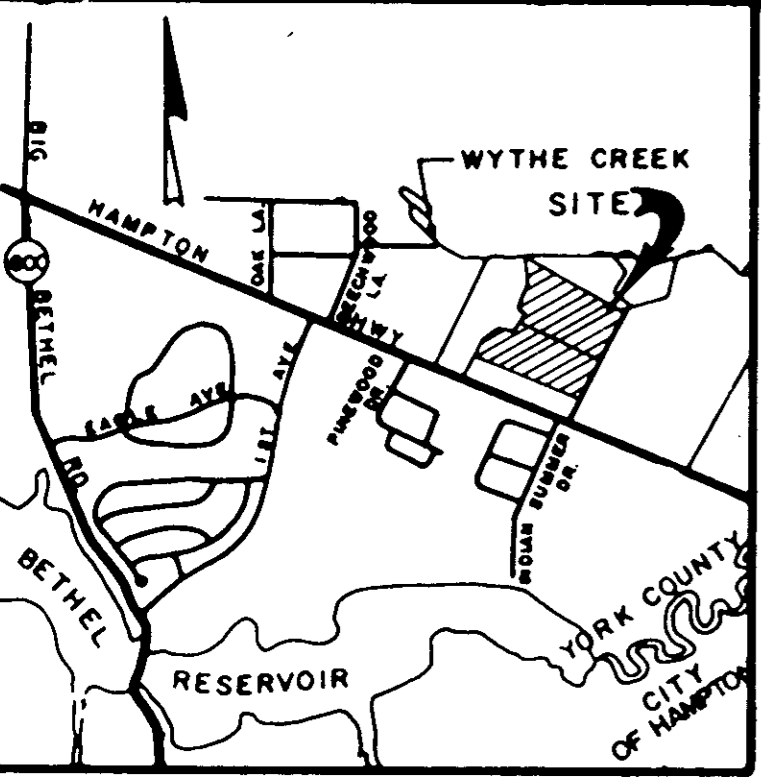


THIS PLAT IS AN EXHIBIT TO THE DECLARATION OF YORKSHIRE DOWNS CONDOMINIUM, DATED MARCH 1, 1989 AND RECORDED IN DEED BOOK _____, PAGE _____

YORKSHIRE DOWNS CONDOMINIUM
PHASE VIII
LOCATED IN YORK COUNTY, VIRGINIA



Talbot & Associates, Ltd.
Architects, Engineers, Planners, Surveyors, Landscape Architects
100 Landmark Square, Virginia Beach, Va. 23452
739 Thimble Shoals Blvd., Suite 1008, Newport News, Va. 23606



NOW OR FORMERLY
CHRISTOPHER YORK ASSOCIATES, L.P.
PHASE 2, SECTION 1

TOTAL ACREAGE = 9.960

200' VEPCO EASEMENT
DB 74 PG 295

PROPOSED VARIABLE WIDTH DRAINAGE & UTILITY EASEMENT
SCALE: 1" = 50'
OCTOBER 6, 1989
SHEET 10F 3

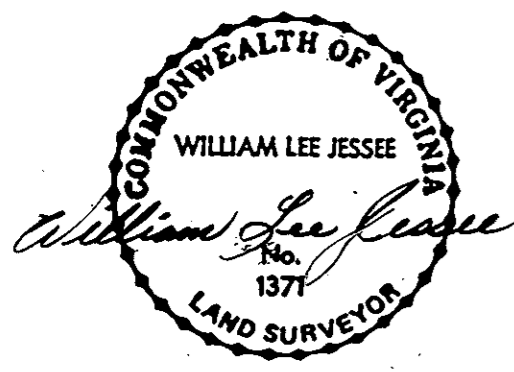
THE PLATTING OF THE LAND HEREON SHOWN IS WITH THE FREE CONSENT AND IN ACCORDANCE WITH THE DESIRE OF THE UNDERSIGNED OWNER.
LANDS END ASSOCIATES, A VIRGINIA LIMITED PARTNERSHIP BY P.H.P. ENTERPRISES INC., A VIRGINIA CORPORATION GENERAL PARTNER
BY: *[Signature]*
P.H.P. ENTERPRISES INC., GENERAL PARTNER
STATE OF VIRGINIA
CITY OF *[Signature]* A NOTARY PUBLIC IN AND FOR THE CITY AND STATE AFORESAID DO HEREBY CERTIFY THAT THE ABOVE NAMED PERSON WHOSE NAME IS SIGNED TO THE FOREGOING WRITING HAS ACKNOWLEDGED THE SAME BEFORE ME IN MY CITY AND STATE AFORESAID.

GIVEN UNDER MY HAND THIS 3rd DAY OF November 1989.
[Signature]
NOTARY PUBLIC

MY COMMISSION EXPIRES: 5-21-92

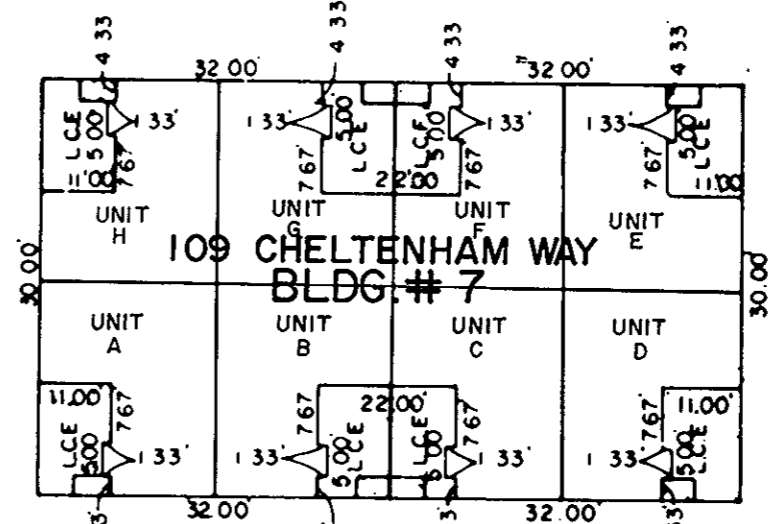
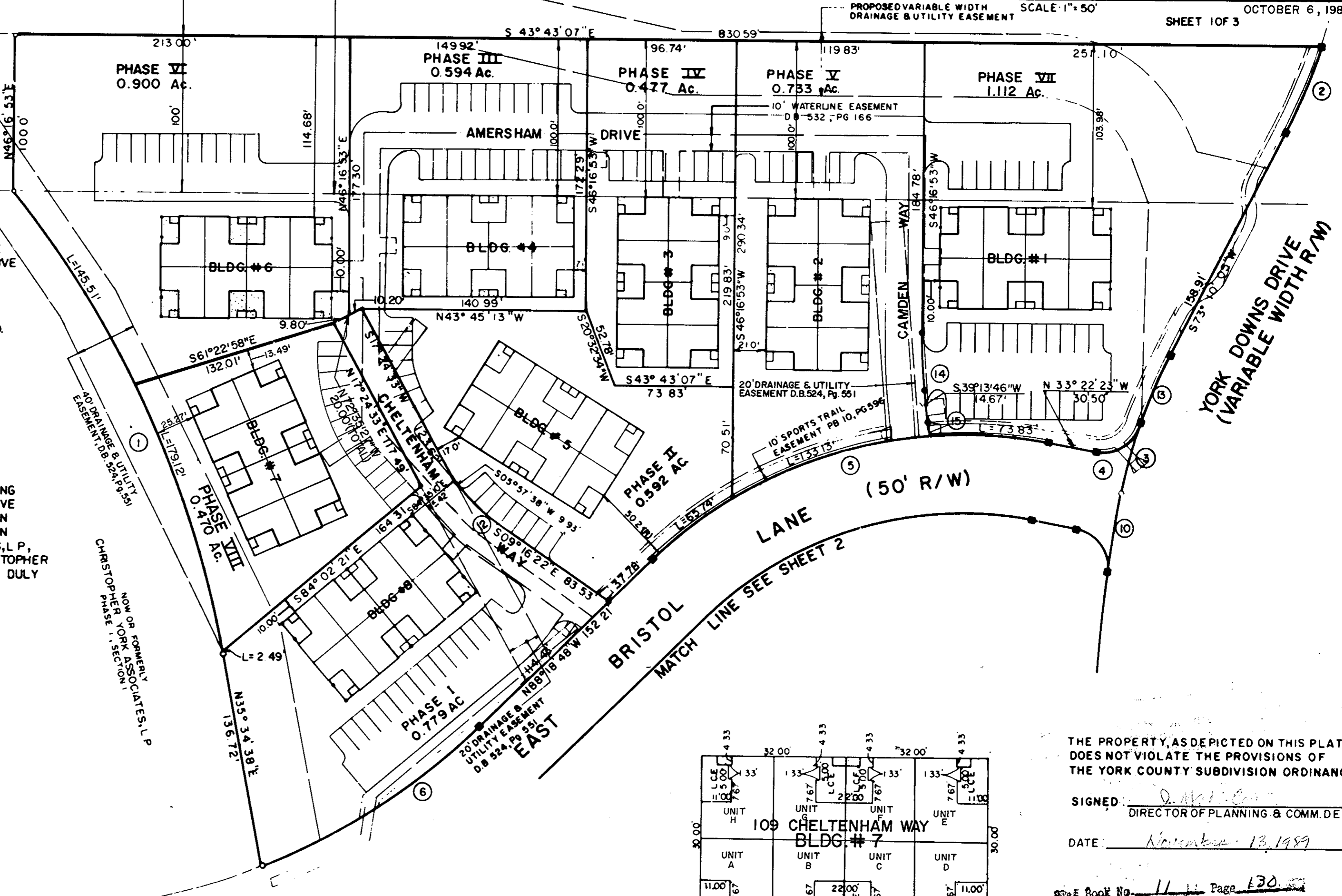
TO THE BEST OF MY KNOWLEDGE AND BELIEF, ALL THE REQUIREMENTS AS SET FORTH IN THE ORDINANCE FOR APPROVING PLATS OF SUBDIVISION IN THE COUNTY OF YORK, VIRGINIA HAVE BEEN COMPLETED WITH, INCLUDING A CLOSURE OF NOT LESS THAN 1' / 10,000'. THIS IS TO CERTIFY THAT THE LAND EMBRACED IN THIS SUBDIVISION IS IN THE NAME OF LANDS END ASSOCIATES, L.P., A VIRGINIA LIMITED PARTNER AND WAS ACQUIRED FROM CHRISTOPHER YORK ASSOCIATES, L.P. BY DEED DATED DEC 9, 1987 AND DULY RECORDED IN THE CLERK'S OFFICE OF THE CIRCUIT COURT OF THE COUNTY OF YORK, VIRGINIA, IN DEED BOOK 506 PAGE 301

[Signature]
WILLIAM LEE JESSEE, LAND SURVEYOR, NO. 1371



I, WILLIAM LEE JESSEE, A DULY REGISTERED SURVEYOR DO HEREBY CERTIFY THAT THIS DRAWING IS ACCURATE (WITHIN NORMAL TOLERANCES) AND COMPLIES WITH SECTION 55-79.58(a) OF THE CONDOMINIUM ACT AND THAT THE UNITS SHOWN HEREON ARE SUBSTANTIALLY COMPLETED IN ACCORDANCE HERewith.

[Signature] DATE 11-2-89



ALL UNITS DEPICTED HEREON ARE SAME UNIT TYPE AS SHOWN ON UNIT DIMENSION PLAN

L.C.E. [Symbol] - LIMITED COMMON ELEMENT

THE PROPERTY, AS DEPICTED ON THIS PLAT DOES NOT VIOLATE THE PROVISIONS OF THE YORK COUNTY SUBDIVISION ORDINANCE.

SIGNED: *[Signature]*
DIRECTOR OF PLANNING & COMM. DEV.

DATE: November 13, 1989

Deed Book No. 111 Page 130

Filed in the Clerk's Office, Circuit Court, York Co., Va. the 14th day of November 1989

Teste: *[Signature]*
Nancy B. Kapa, Clerk